



\*Concept only, for specific elevation see reverse side.



Homes built by Sterling Homes are 20% more energy-efficient than the average home. This means you'll enjoy lower utility bills and a more comfortable living environment, all while being kind to the planet!



Kitchen

## Kitchen

- Executive Kitchen with built-in stainless steel appliances including chimney hoodfan and gas cook top
- Spice Kitchen with gas range and pantry shelving
- Waterfall Island
- 2-tone cabinets

## Bathrooms

- 5-piece Ensuite including fully tiled shower
- Tiled floor in Ensuite
- Dual sinks in Main bath
- Bedroom and full bathroom on main floor

## Rest of Home

- Electric fireplace with floor to ceiling tile
- Paint grade railing with iron spindles
- Upper floor balcony
- Vaulted Bonus Room ceiling
- Quartz countertops with undermount sinks throughout
- Finished basement stairwell

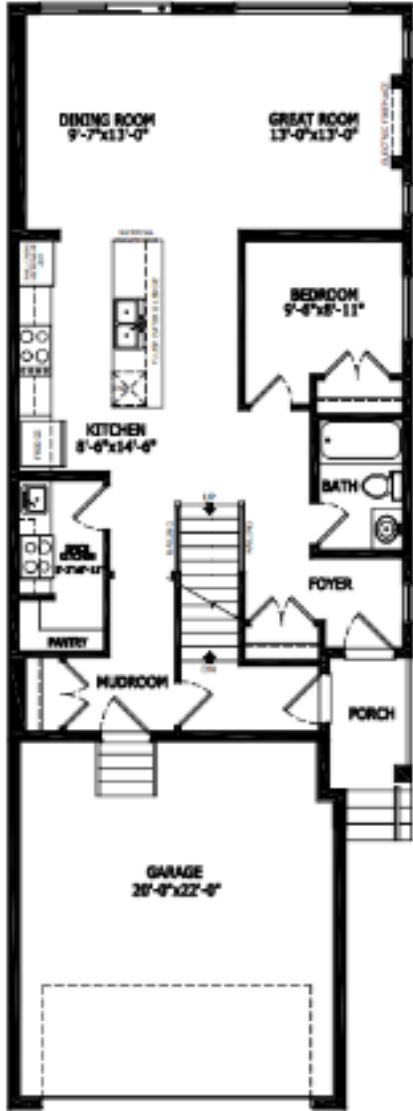
## Convenience

- 2024 specifications
- Separate entrance to basement
- LVP throughout main floor
- BBQ Gasline
- Walk-in closets in all bedrooms



Home Interiors

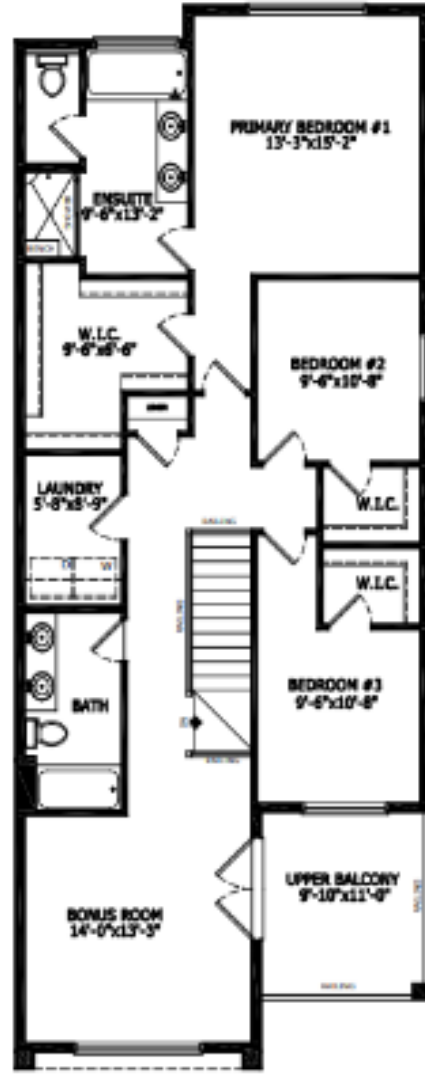
# Floorplan



Main Level: 1031 sq. ft.



Amanda Loh  
Area Manager



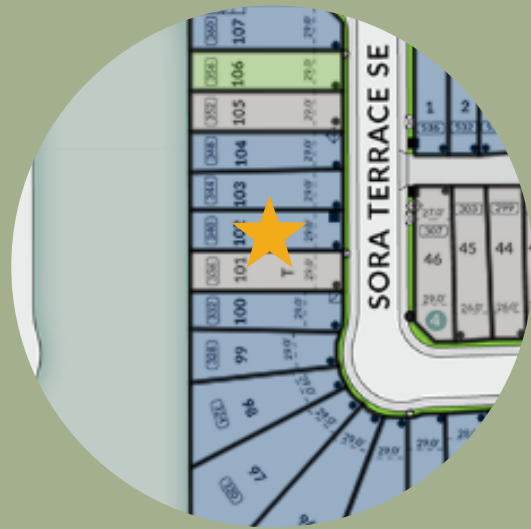
Upper Level: 1263 sq. ft.



Travis Smith  
Area Associate



Elevation



Lot Location

## Contact:

P: (403)460-4395  
E: sora@sterlingcalgary.com