

DAMON

Address
245 Sora Way SE

Job#
114076

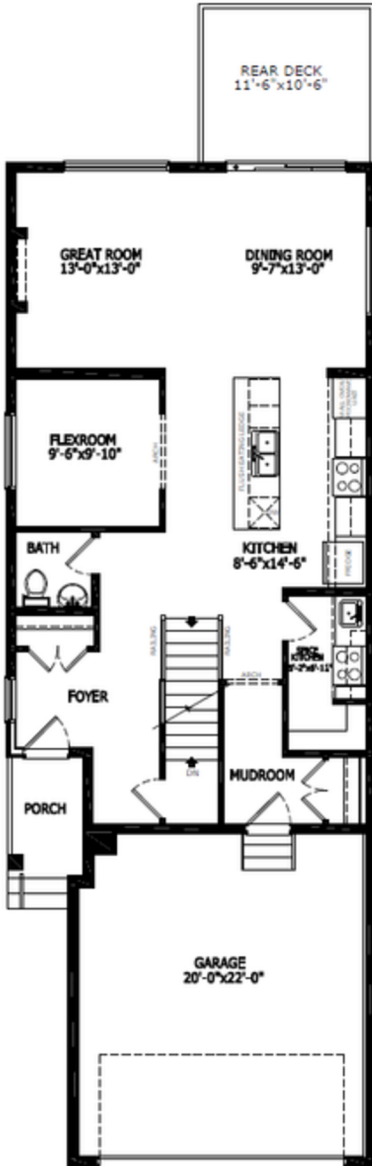
Total Sq. Ft. - 2398

Bedrooms - 4

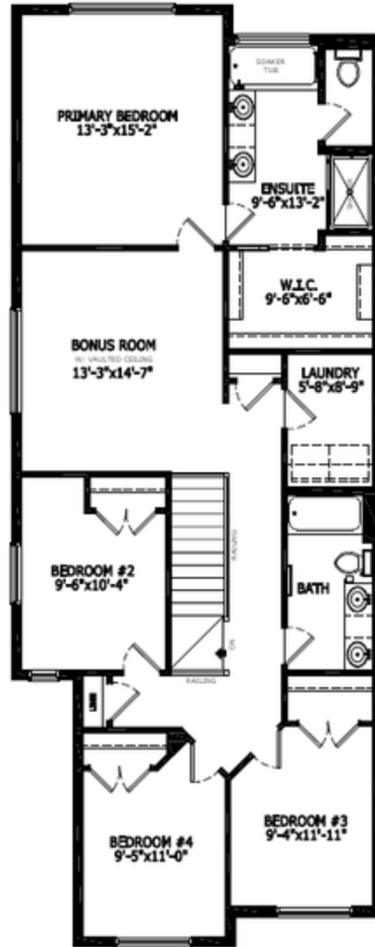
Bathrooms - 2.5

Garage - 2 Car

Floorplan



Main Level: 1031 sq. ft.



Upper Level: 1367 sq. ft.



Elevation



Lot Location



Sophiah Campbell
Area Manager



Amanda Loh
Area Manager



Emily Spence
Area Associate

Contact:

P: 403-460-4395

E: sora@sterlingcalgary.com

Features



Without the Wait homes offer the benefit of moving in sooner, plus include these extra perks:

- **Curated Design:** Most popular floorplans and personalized interiors
- **Smart Energy:** Built-in energy efficiency and Smart Home features
- **Easy Move by Virtu:** Concierge services, moving totes, and a customer portal app
- **Sterling Built Rewards:** Exclusive perks, offers, and partnerships for homeowners

Home Highlights

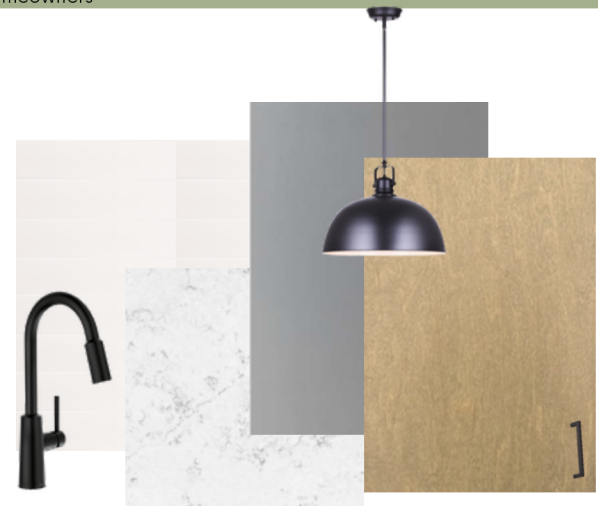
- 2025 Specifications
- 9' basement ceiling
- Walkout basement
- Backing onto wetland pond
- Rear vinyl deck with concrete patio and BBQ gas line rough-in
- Main floor flex room
- Electric fireplace with paint grade mantle and tile below
- Paint grade railing with iron spindles
- Vaulted bonus room ceiling
- Quartz countertops with undermount sinks
- LVP throughout main floor
- Additional windows

Kitchen Elements

- Stainless steel appliances with chimney hoodfan and built-in microwave appliance tower
- Gas line for future gas range
- Waste bin pull-out
- Quartz waterfall island
- Pendant lighting
- Spice kitchen with gas range and pantry shelving

Bathroom Elements

- 5-piece ensuite with soaker tub
- Fiberglass base shower with tiled walls in ensuite
- Bank of drawers in ensuite and main bath vanity
- Tile flooring in ensuite



Kitchen



Home Interiors