


LEGACY

Address
237 Sora Way SE

Job#
114078

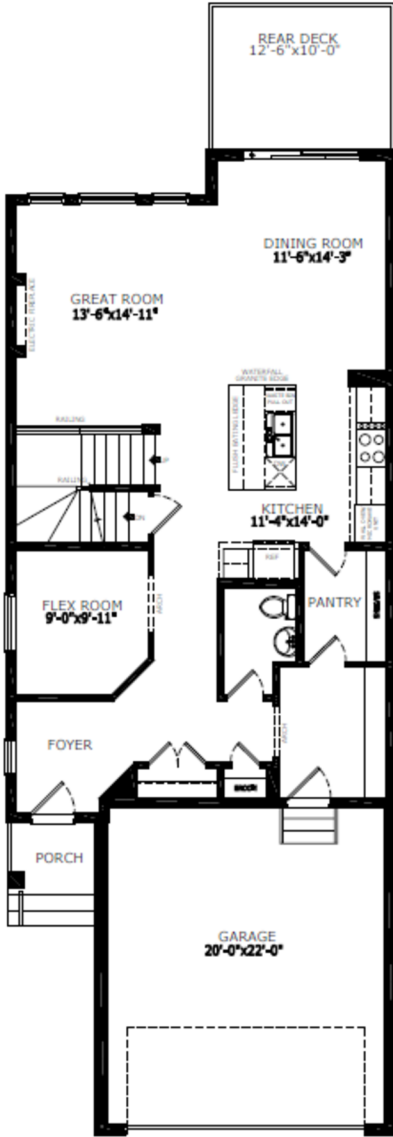
 Total Sq. Ft. - 2464

 Bedrooms - 4

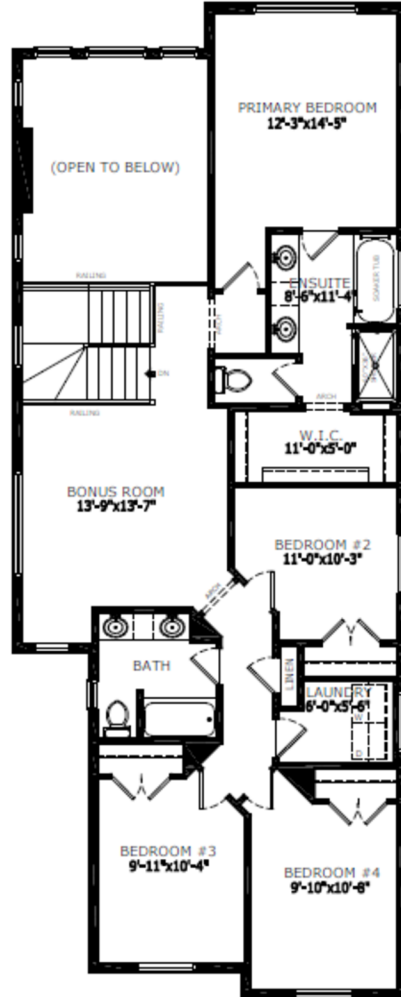
 Bathrooms - 2.5

 Garage - 2 Car

Floorplan



Main Level: 1110 sq. ft.



Upper Level: 1354 sq. ft.



Elevation



Lot Location



Sophiah Campbell
Area Manager



Amanda Loh
Area Manager



Emily Spence
Area Associate

Contact:

P: 403-460-4395

E: sora@sterlingcalgary.com

Features



Without the Wait homes offer the benefit of moving in sooner, plus include these extra perks:

- **Curated Design:** Most popular floorplans and personalized interiors
- **Smart Energy:** Built-in energy efficiency and Smart Home features
- **Easy Move by Virtu:** Concierge services, moving totes, and a customer portal app
- **Sterling Built Rewards:** Exclusive perks, offers, and partnerships for homeowners

Home Highlights

- 2025 Specifications
- 9' basement ceiling
- Walkout basement
- Backing onto wetland pond
- Open to below
- Rear vinyl deck and concrete patio with BBQ gas line rough-in
- Main floor flex room
- Open bench and coat rack with cubbies in mudroom
- Electric fireplace with mantle and tile below
- Quartz countertops with undermount sinks
- LVP throughout main floor
- Paint grade railing with iron spindles
- Additional windows

Kitchen Elements

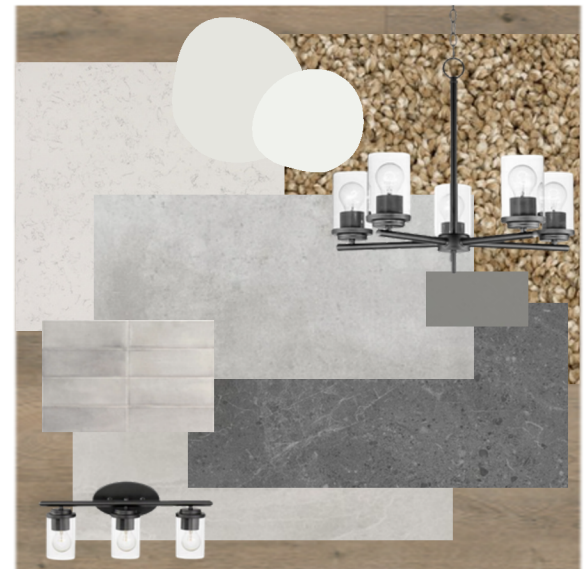
- Executive kitchen with stainless steel appliances, cabinet chimney hoodfan and gas cooktop
- Waste bin pull-out
- Pendant lighting
- Walk-through pantry with french doors

Bathroom Elements

- 5-piece ensuite with soaker tub
- Fiberglass base shower with tiled walls and niche in ensuite
- Dual sinks in main bath
- Bank of drawers in ensuite and main bath vanity
- Tile flooring in upper bathrooms and laundry



Kitchen



Home Interiors