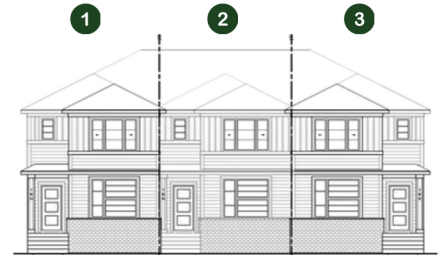


### Every home includes:

- 2025 Specifications
- 9' basement wall height
- LVP throughout main floor
- Quartz countertops with undermount sinks
- Stainless Steel Appliances
- 20x20 detached garage
- Rear deck with BBQ gas line rough-in
- James Hardie siding with black windows
- Large Windows
- Front and rear landscaping



#### 138009 - 1181 Alpine Avenue

1

Birch - 1549 sq ft  
3 Beds | 2.5 baths

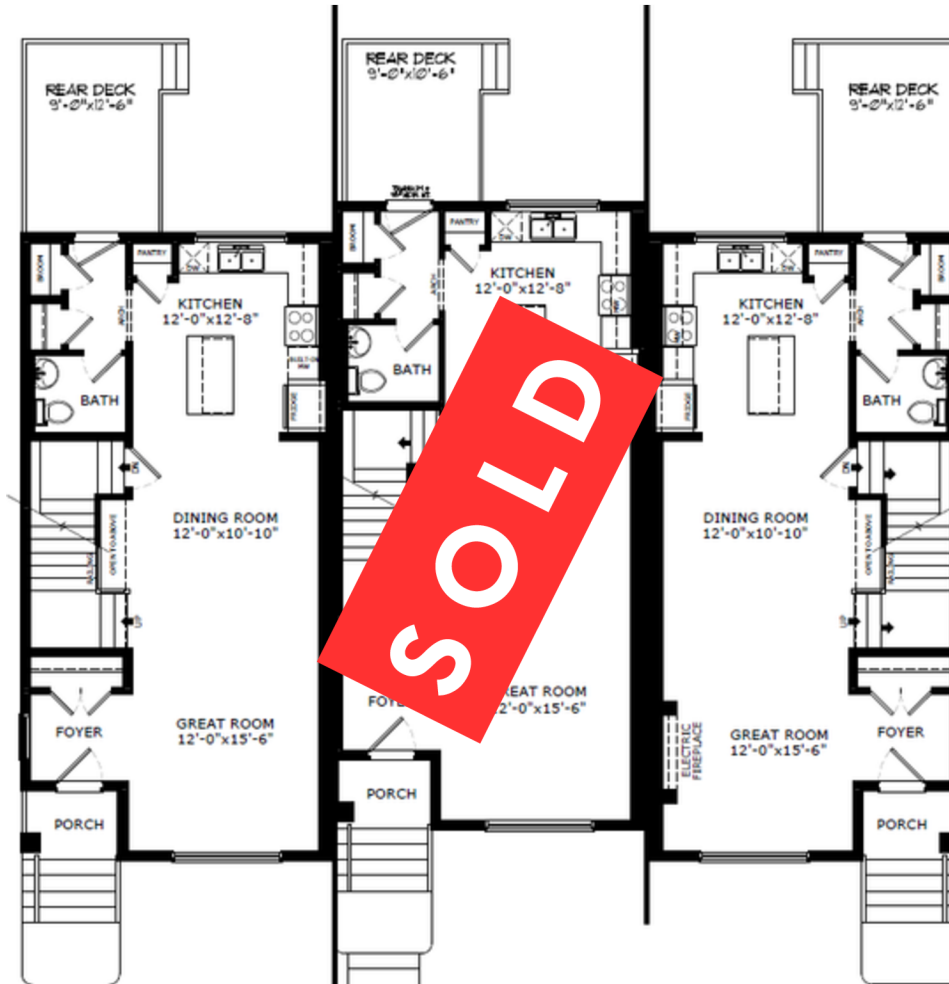
- Painted basement floor
- Paint grade railing with iron spindles
- Chimney hoodfan and built-in microwave
- Pendant lighting
- 4-piece ensuite
- Fiberglass base shower with tiled walls in ensuite
- Tile flooring in upper bathrooms and laundry
- Additional windows throughout

#### 138008 - 1185 Alpine Avenue

2

Birch - 1549 sq ft  
3 Beds | 2.5 baths

- Painted basement floor
- A/C rough-in
- Paint grade railing with iron spindles
- Chimney hoodfan and built-in microwave
- Pendant lighting
- 4-piece ensuite
- Fiberglass shower in ensuite
- Tile flooring in ensuite and main bath



Main Level: 772 sq. ft.

1

Main Level: 772 sq. ft.

2

Main Level: 772 sq. ft.

3

#### 138007 - 1189 Alpine Avenue

3

Birch - 1549 sq ft  
3 Beds | 2.5 baths

- Painted basement floor
- Maple railing with iron spindles
- Electric fireplace with drywall ledge
- Chimney hoodfan and built-in microwave
- Waterfall quartz island
- Pendant lighting
- 4-piece ensuite
- Fiberglass base shower with tiled walls in ensuite
- Tile flooring in upper bathrooms and laundry
- Additional windows throughout

# Sterling HOMES

A QUALICO Company

## Contact:



Lauren McCarthy  
Area Manager



Alix Gusdal  
Area Associate

P: (403) 452-3538 | E: vermillionhill@sterlingcalgary.com



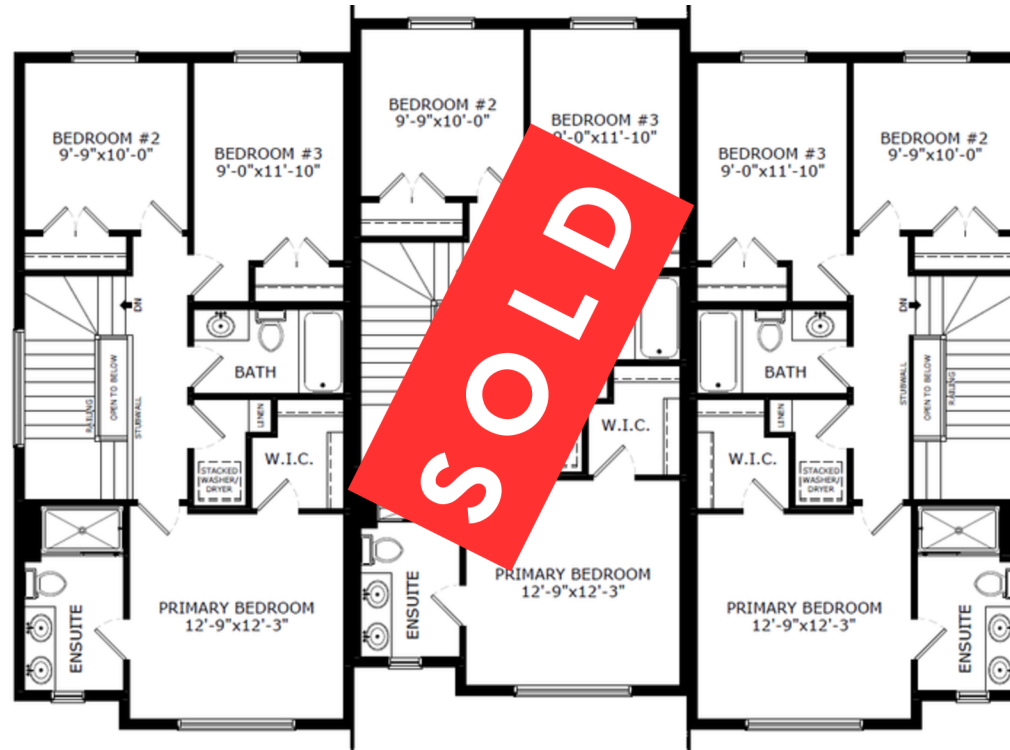
1



2



3



Upper Level: 777 sq. ft.

1

Upper Level: 777 sq. ft.

2

Upper Level: 777 sq. ft.

3