

# PIERCE 2



931 Langholm Drive

📍 - Lanark Landing, SE Airdrie

Job # 157050

 **Total Sq. Ft. - 2486**

 **Bedrooms - 5**

 **Bathrooms - 4**

- Side entry
- 8'9" basement height
- Additional windows added throughout home
- Main floor full bedroom and bathroom
- Executive kitchen
- Double front entry doors
- Electric fireplace with tile face and maple mantle
- Maple railing with iron spindles
- Double primary
- Jack and jill layout
- Vaulted ceiling in bonus room
- Tile flooring in all wet areas
- Interior finishing Package - Black
- Granite/quartz in kitchen and bathrooms
- 9ft ceiling on main floor
- LVP flooring throughout main floor and wet areas
- Knockdown ceilings on main and upper floor
- Stainless steel kitchen appliance package
- Smart Energy Package



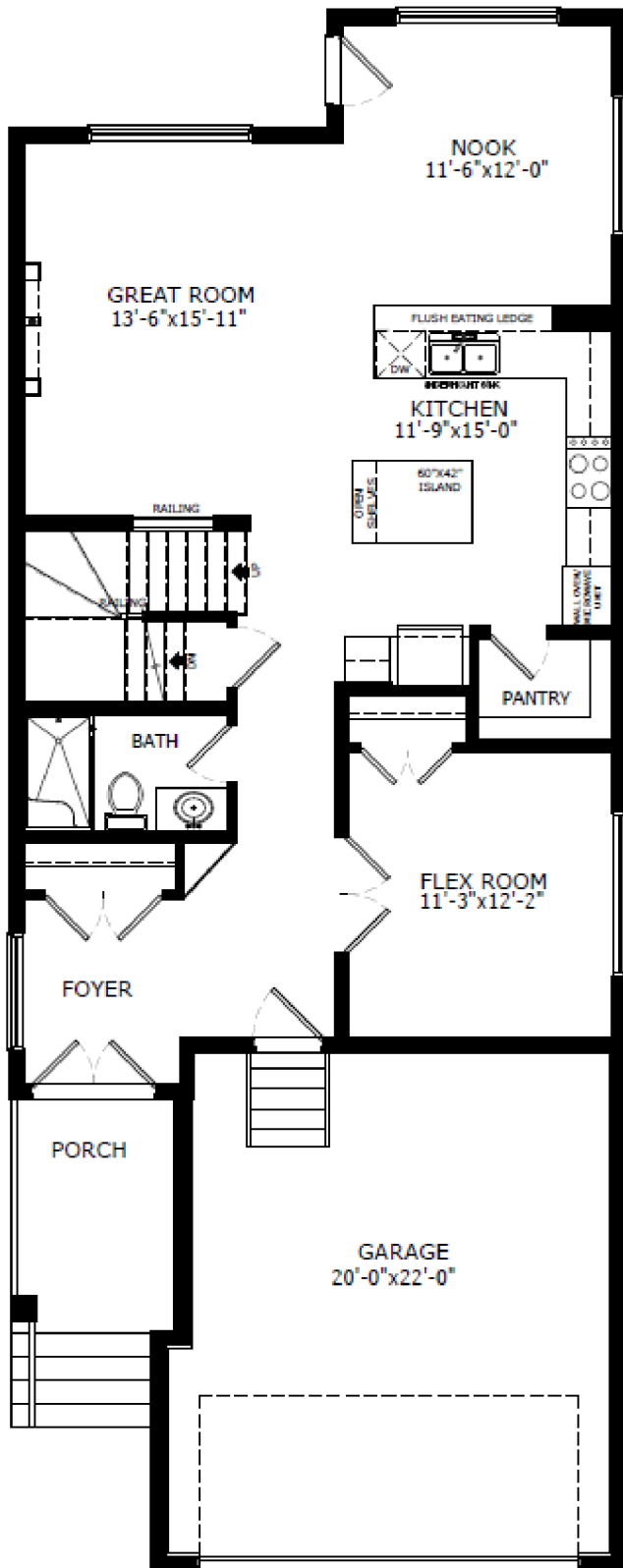
Contact: Raman Dhillon & Emily Flegel

P: 403-980-1189 E: lanark@sterlingcalgary.com

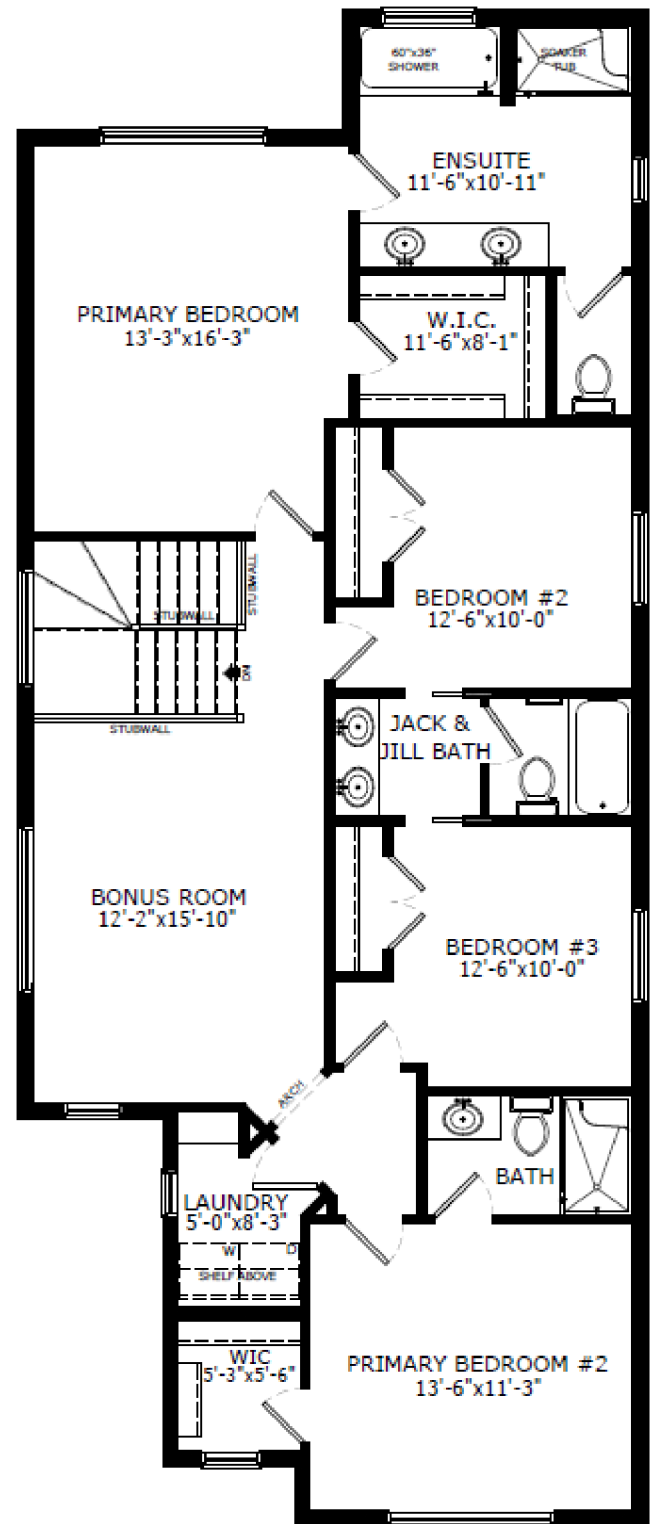
# PIERCE 2

**Sterling**  
HOMES

A QUALICO Company



Main Level: 1092 sq. ft.



Upper Level: 1394 sq. ft.