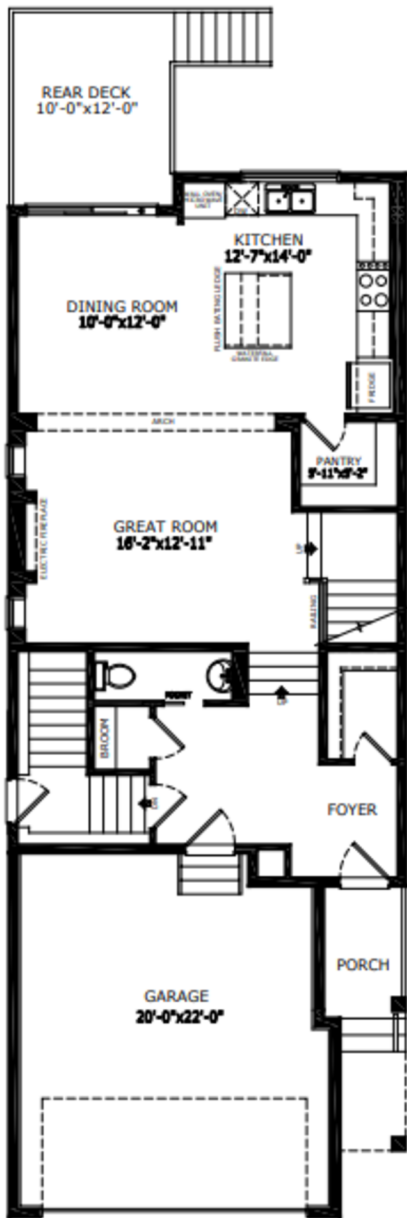
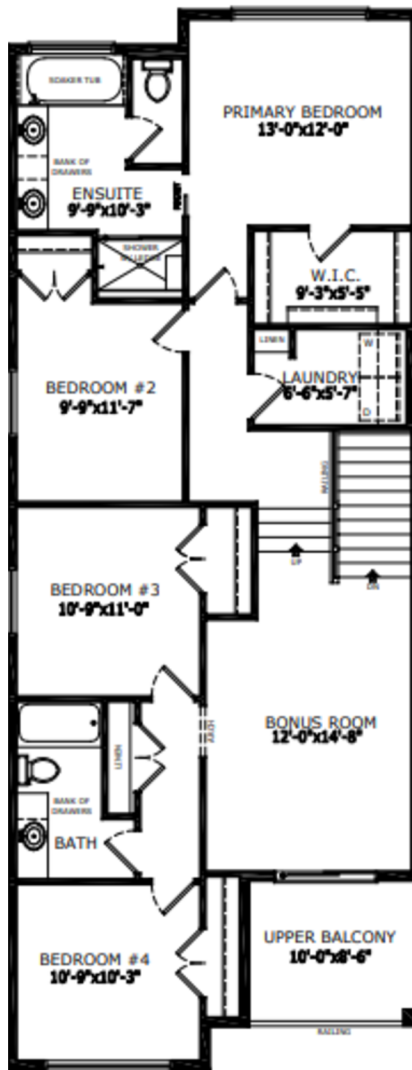


Floorplan



Main Level: 983 sq. ft.



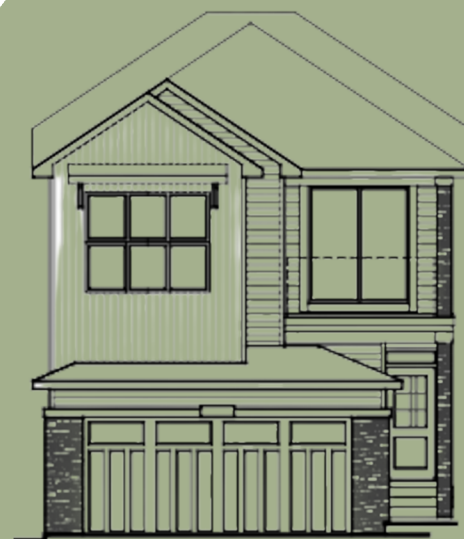
Upper Level: 1292 sq. ft.



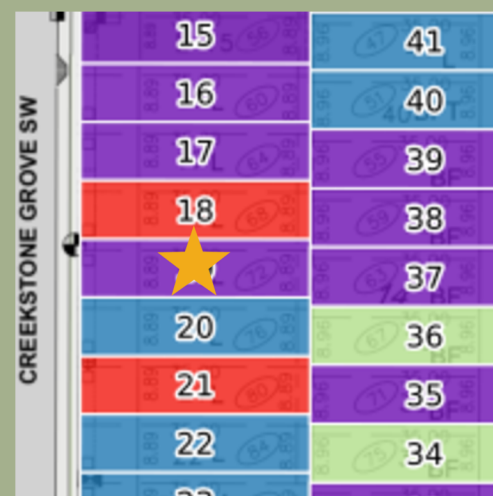
Melissa Principalli
Area Manager



Emily Flegel
Area Associate



Elevation



Lot Location

Contact:

P: 403-454-8684

E: pinecreek@sterlingcalgary.com

Features



Without the Wait homes offer the benefit of moving in sooner, plus include these extra perks:

- **Curated Design:** Most popular floorplans and personalized interiors
- **Smart Energy:** Built-in energy efficiency and Smart Home features
- **Easy Move by Virtuio:** Concierge services, moving totes, and a customer portal app
- **Sterling Built Rewards:** Exclusive perks, offers, and partnerships for homeowners

Home Highlights

- 2025 Specifications
- Side entrance
- 9' basement wall height
- Electric fireplace with mantle above
- Rear deck with BBQ gasline rough-in
- Paint grade railing with iron spindles
- Upper floor vinyl balcony with glass railing
- LVP throughout main floor
- Quartz countertops with undermount sinks
- Triple pane windows
- Additional windows throughout

Kitchen Elements

- Executive kitchen with built-in stainless steel appliances
- Gas cooktop
- Fridge with water and ice dispenser
- Waterfall island
- Walk-in pantry with french door
- Silgranit sink

Bathroom Elements

- 5-piece ensuite with tiled shower and soaker tub
- Tile flooring in upper floor bathrooms
- Bank of drawers in ensuite and main bath vanity



Kitchen



Home Interiors