







553 Grayling Bend

📍 - Harmony, Springbank
Job # 169095

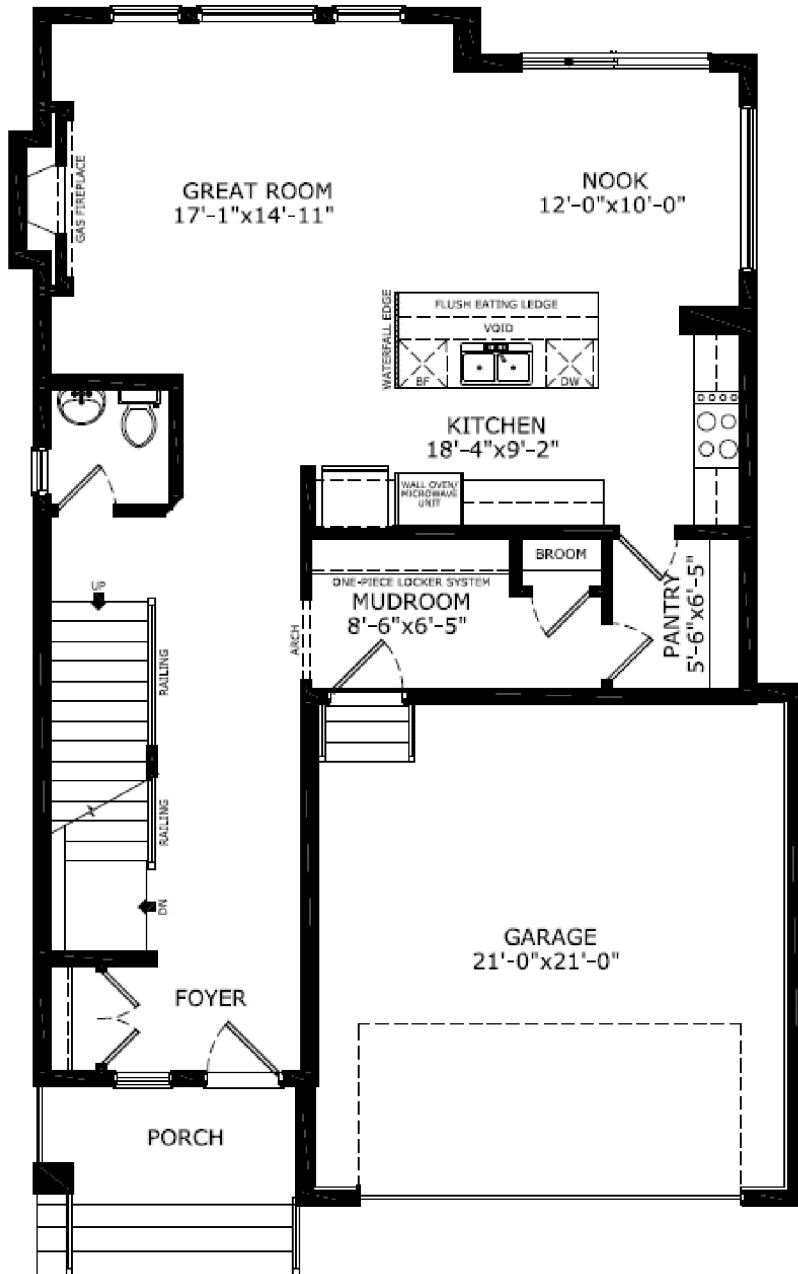
-  **Total Sq. Ft. - 2161**
-  **Bedrooms - 3**
-  **Bathrooms - 2.5**
-  **Garage - 2 Car**

- Craftsman elevation with James Hardie siding
- 9' ceilings main floor & basement
- Executive Kitchen with gas range, hood fan, built-in wall oven and microwave, dishwasher, bar fridge and french door fridge with water line
- Extra pots & pans drawers & under cabinet lighting
- Walk-in pantry with MDF shelving
- Quartz counters with undermount sinks throughout
- Additional triple pane windows throughout
- Paint grade railing with iron spindles
- One piece locker system in mudroom
- Gas fireplace with wall tile up to paint grade mantle
- Vaulted ceilings in primary and bonus rooms
- 5-piece ensuite includes fully tiled shower with bench, 10 mil glass swing door, soaker tub, dual sinks, private WC & in-floor heat
- MDF in primary WIC
- Gas line for BBQ
- February 2023 specifications

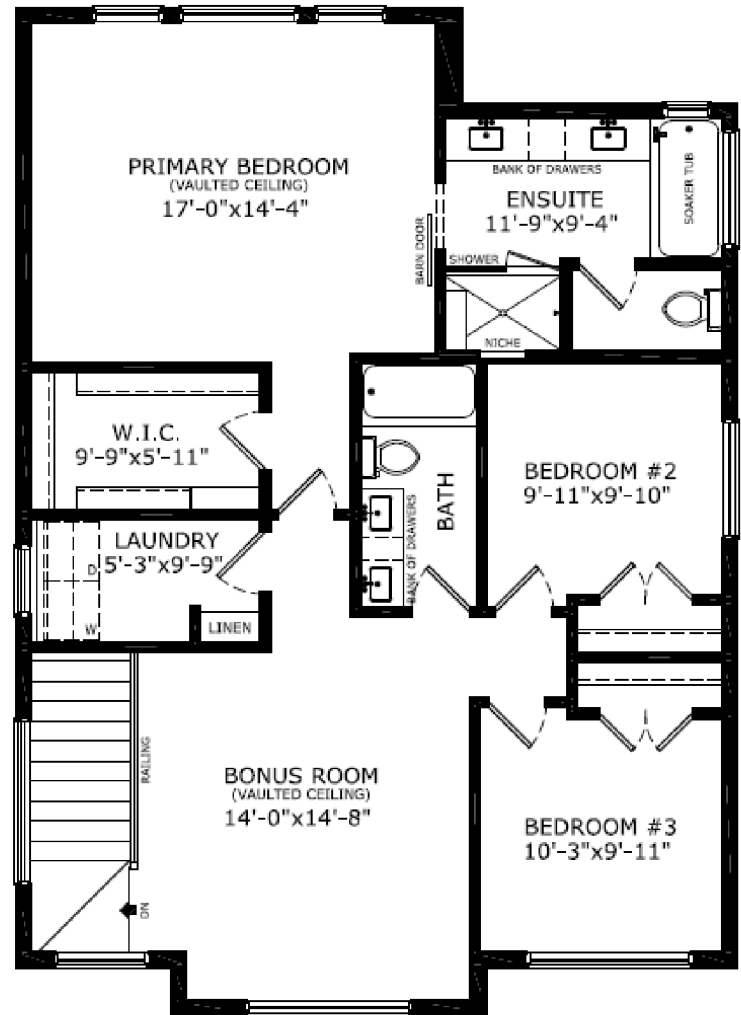


Contact: Alexandra Mouwen & Marguerite Bekker

P: (403)984-2888 E: harmony@sterlingcalgary.com



Main Level: 1034 sq. ft.



Upper Level: 1127 sq. ft.