

BIRKLEY 3

Address
112 Amblefield Grove

Job#
220102

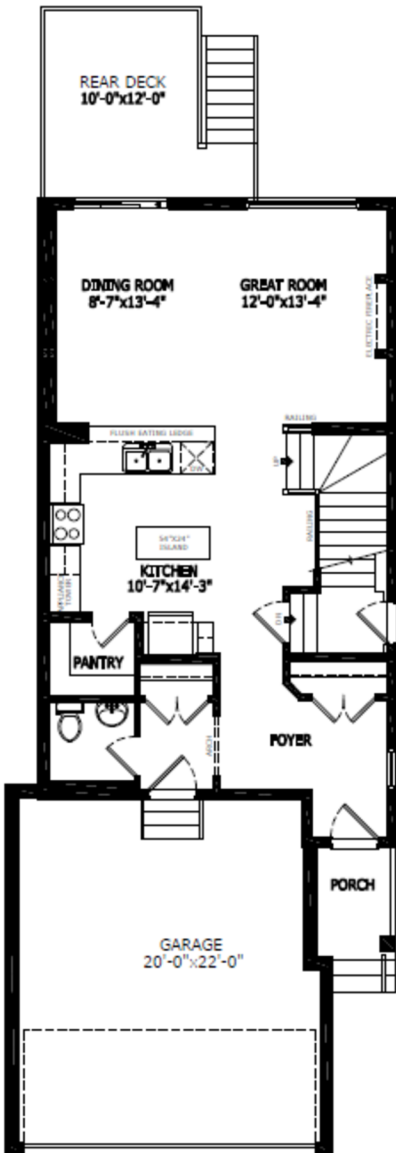
Total Sq. Ft. - 1919

Bedrooms - 3

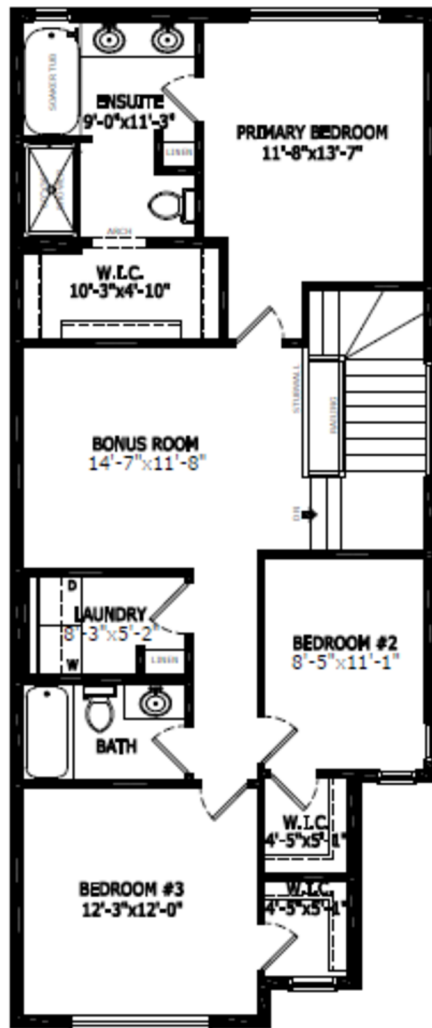
Bathrooms - 2.5

Garage - 2

Floorplan



Main Level: 831 sq. ft.



Upper Level: 1088 sq. ft.



Elevation



Lot Location



Brandi Penrose
Area Manager



Michael Cornell
Area Associate

Contact:

P: (403) 516-2288

E: Ambleton@sterlingcalgary.com


BIRKLEY 3

Address

112 Amblefield Grove

Job#

220102

 Total Sq. Ft. - 1919

 Bedrooms - 3

 Bathrooms - 2.5

 Garage - 2

Features



Without the Wait homes offer the benefit of moving in sooner, plus include these extra perks:

- **Curated Design:** Most popular floorplans and personalized interiors
- **Smart Energy:** Built-in energy efficiency and Smart Home features
- **Easy Move by Virtuo:** Concierge services, moving totes, and a customer portal app
- **Sterling Built Rewards:** Exclusive perks, offers, and partnerships for homeowners

Home Highlights

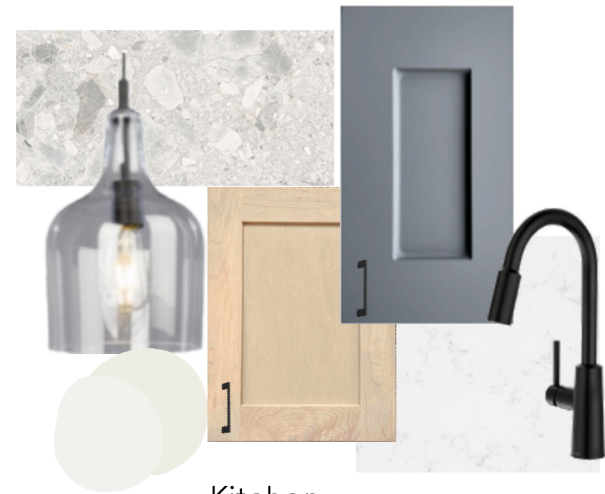
- 2025 Specifications
- Sunshine lot
- Side entrance
- Painted basement floor
- Larger basement window
- Maple railing with iron spindles
- Electric fireplace with maple cap
- Rear 10x12 deck with BBQ gas line
- Additional width to garage
- Washer/dryer

Kitchen Elements

- Chimney hood fan with microwave wall unit
- Pendants lights above eating ledge
- Walk-in pantry

Bathroom Elements

- Fiberglass base shower with tiled walls in ensuite
- Tiled niche in ensuite shower
- Bank of drawers in ensuite



Kitchen



Home Interiors