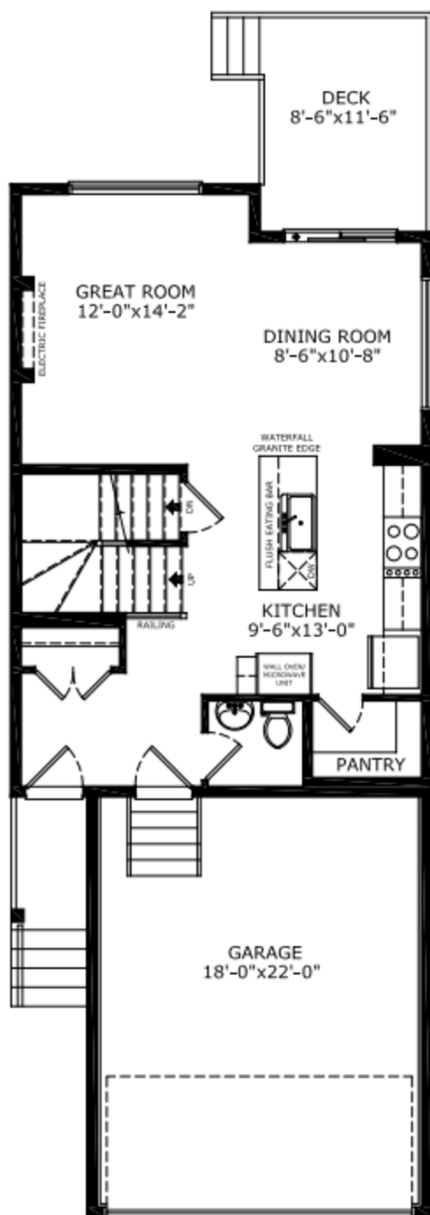
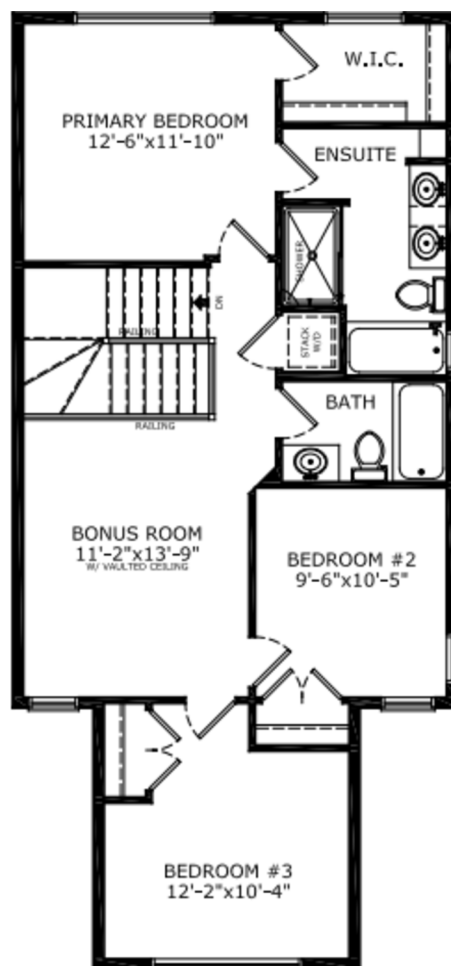


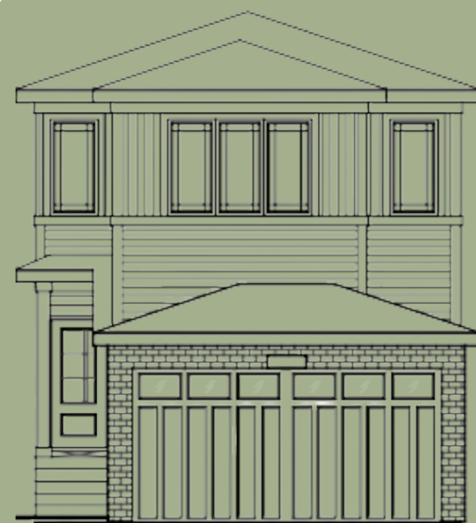
## Floorplan



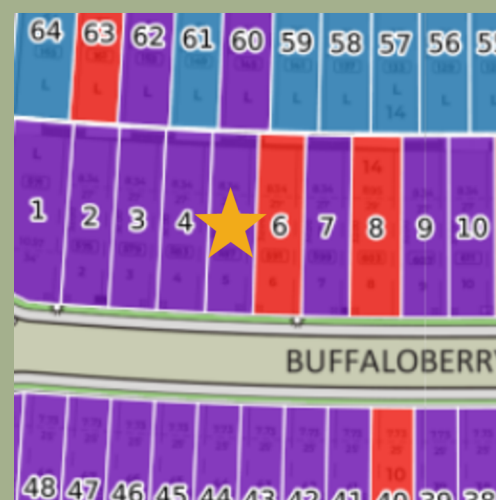
Main Level: 682 sq. ft.



Upper Level: 863 sq. ft.



Elevation



Lot Location



Alex Normandeau  
Area Manager



Myla Sexton  
Area Associate

### Contact:

P: (403) 453-3042

E: [loganlanding@sterlingcalgary.com](mailto:loganlanding@sterlingcalgary.com)

## Features



**Without the Wait homes offer the benefit of moving in sooner, plus include these extra perks:**

- **Curated Design:** Most popular floorplans and personalized interiors
- **Smart Energy:** Built-in energy efficiency and Smart Home features
- **Easy Move by Virtuo:** Concierge services, moving totes, and a customer portal app
- **Sterling Built Rewards:** Exclusive perks, offers, and partnerships for homeowners

### Home Highlights

- 2025 Specifications
- Rear deck with BBQ gasoline rough-in
- Dining room wall detail
- Electric fireplace with maple mantle
- Maple railing with iron spindles
- Vaulted bonus room
- LVP throughout main floor and laundry room
- Tile flooring in upper floor bathrooms
- Quartz countertops with undermount sinks
- Upper floor laundry
- Triple pane windows
- Additional windows

### Kitchen Elements

- Executive kitchen with built-in stainless steel appliances
- Gas cooktop
- Fridge with water and ice dispenser
- Waterfall island
- Pots and pans drawers
- Walk-in pantry
- Single bowl silgranit sink

### Bathroom Elements

- 5-piece ensuite with fiberglass base shower with tiled walls
- Bank of drawers in ensuite and main bath vanity



Kitchen



## Home Interiors