

# DENALI 7

Address

**145 Snowberry Common**

Job#

**230037**

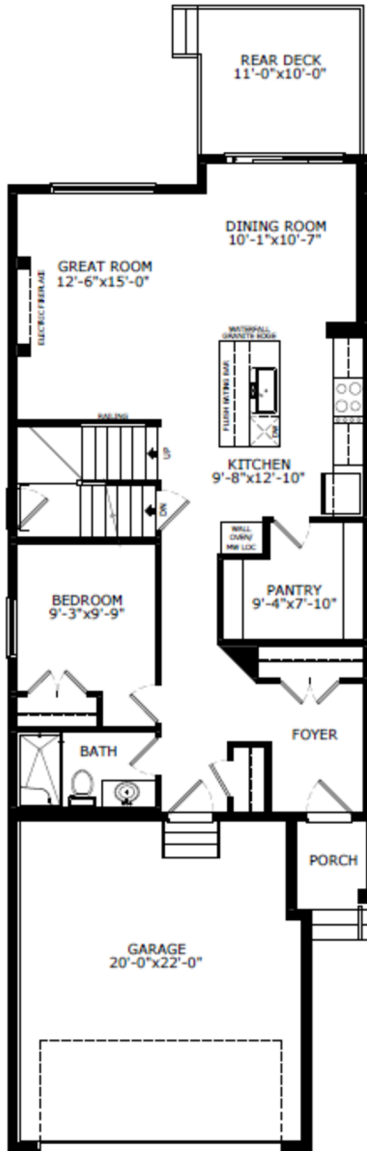
Total Sq. Ft. - 2329

Bedrooms - 4

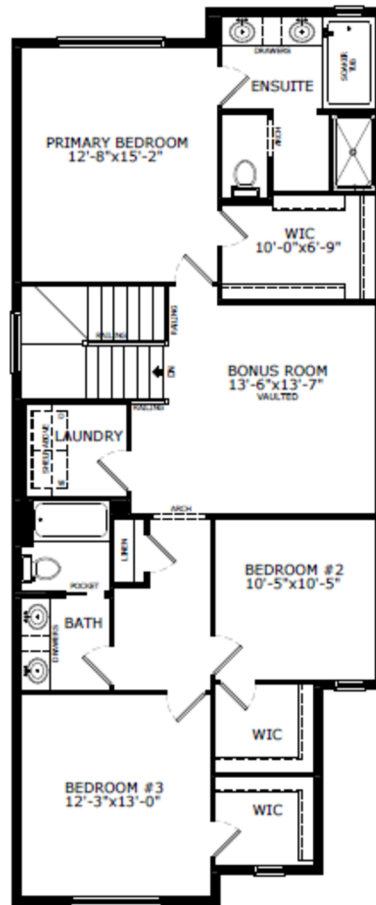
Bathrooms - 3

Garage - 2 Car

## Floorplan



Main Level: 1031 sq. ft.



Upper Level: 1298 sq. ft.



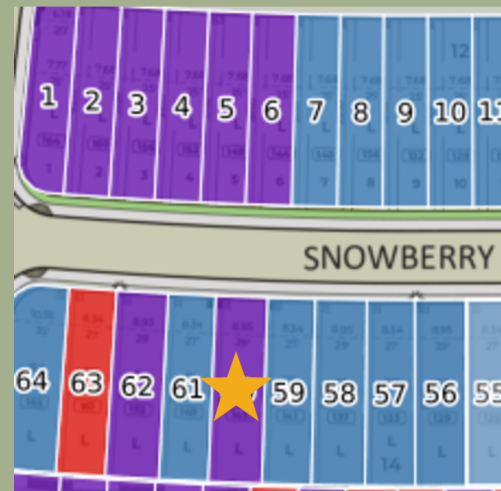
Alex Normandeau  
Area Manager



Myla Sexton  
Area Associate



Elevation



Lot Location

### Contact:

P: (403) 453-3042

E: [loganlanding@sterlingcalgary.com](mailto:loganlanding@sterlingcalgary.com)

## Features



Without the Wait homes offer the benefit of moving in sooner, plus include these extra perks:

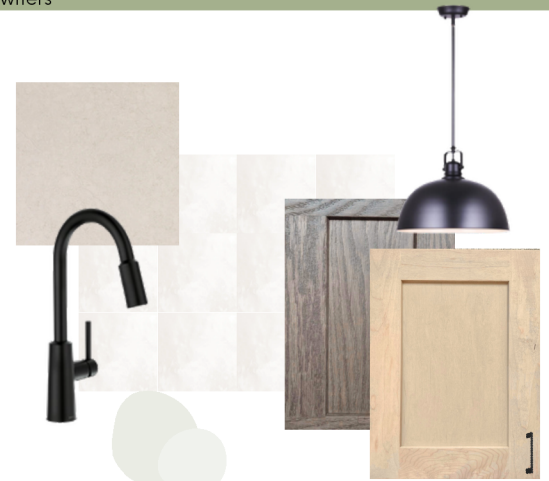
- **Curated Design:** Most popular floorplans and personalized interiors
- **Smart Energy:** Built-in energy efficiency and Smart Home features
- **Easy Move by Virtu:** Concierge services, moving totes, and a customer portal app
- **Sterling Built Rewards:** Exclusive perks, offers, and partnerships for homeowners

### Home Highlights

- 2025 Specifications
- 2 bedroom legal suite rough-in
- Side entrance
- Rear deck with BBQ gasline rough-in
- Main floor bedroom and full bathroom
- Electric fireplace with drywall ledge
- Paint grade railing with iron spindles
- Vaulted bonus room
- LVP throughout main floor
- Quartz countertops with undermount sinks
- Upper floor laundry
- Additional windows throughout
- Triple Pane windows

### Kitchen Elements

- Executive kitchen with built-in stainless steel appliances, cabinet style chimney hoodfan, and gas cooktop
- Pendant lighting



Kitchen

### Bathroom Elements

- 5-piece ensuite with soaker tub and bank of drawers
- Fiberglass base shower in ensuite with tiled walls and glass barn door
- Tile flooring in ensuite
- Fiberglass shower in main floor bath



## Home Interiors