



Total Sq. Ft. - 1820



Bedrooms - 3



Bathrooms - 2.5



*Concept only, for specific elevation see reverse side.



Homes built by Sterling Homes are 20% more energy-efficient than the average home. This means you'll enjoy lower utility bills and a more comfortable living environment, all while being kind to the planet!



Kitchen

- Executive kitchen with built-in stainless steel appliances
- Gas range
- Island with waterfall edge
- Silgranit sink
- Walk-in corner pantry
- Tile backsplash

Bathrooms

- LVP in main bath and laundry room
- Upgraded tiled ensuite shower
- Tiled floor in ensuite
- 5-piece ensuite with dual sinks and stand-alone tub

Convenience

- 2024 specifications
- 9' basement ceiling
- Main floor flex room
- W.I.C in primary bedroom
- Side entrance
- Basement suite RI

Rest of Home

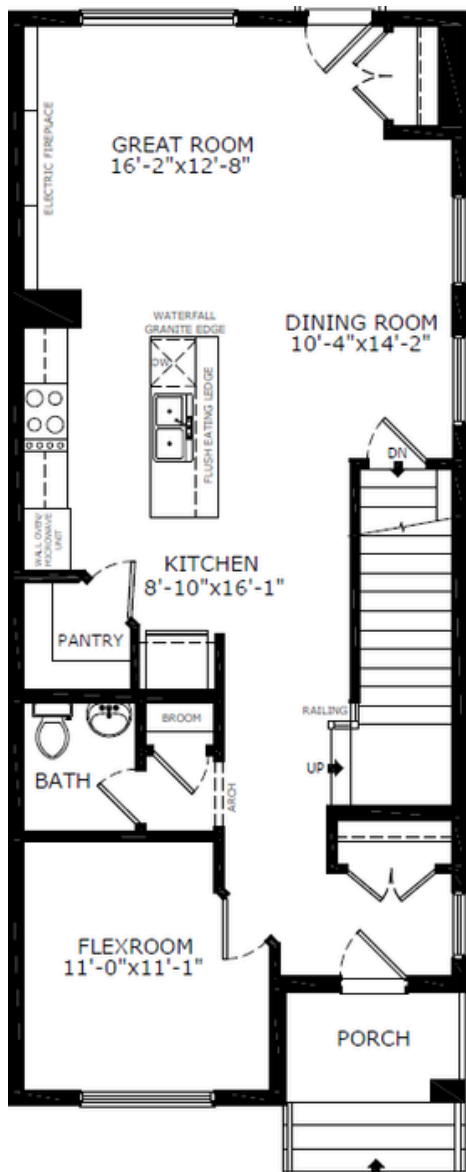
- Upper floor loft with vaulted ceiling
- Paint grade railing with iron spindles
- Electric fireplace with wall-to-wall tile face

Kitchen

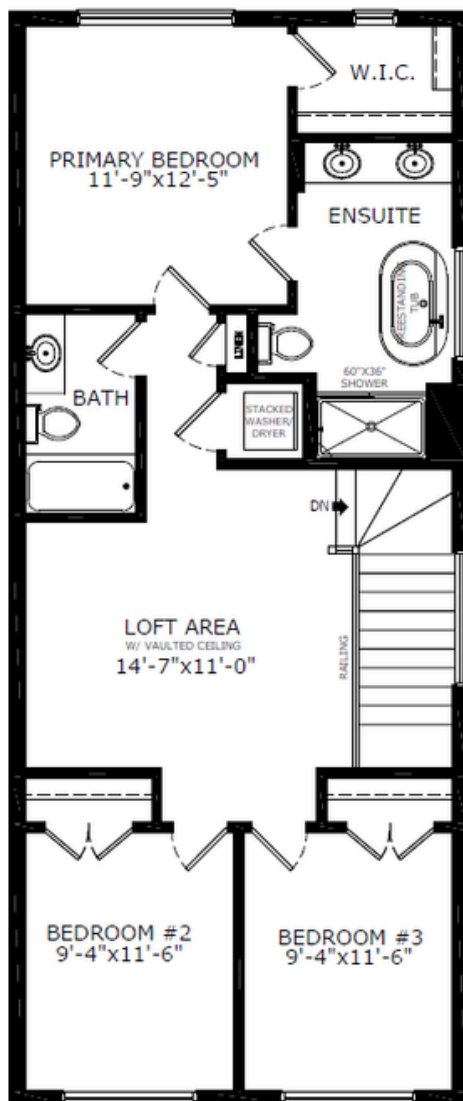


Home Interiors

Floorplan



Main Level: 920 sq. ft.



Upper Level: 900 sq. ft.



Elevation



Lot Location



Doug Anderson
Area Manager



Sophiah Campbell
Area Associate

Contact:

P: (403)453-3042

E: loganlanding@sterlingcalgary.com