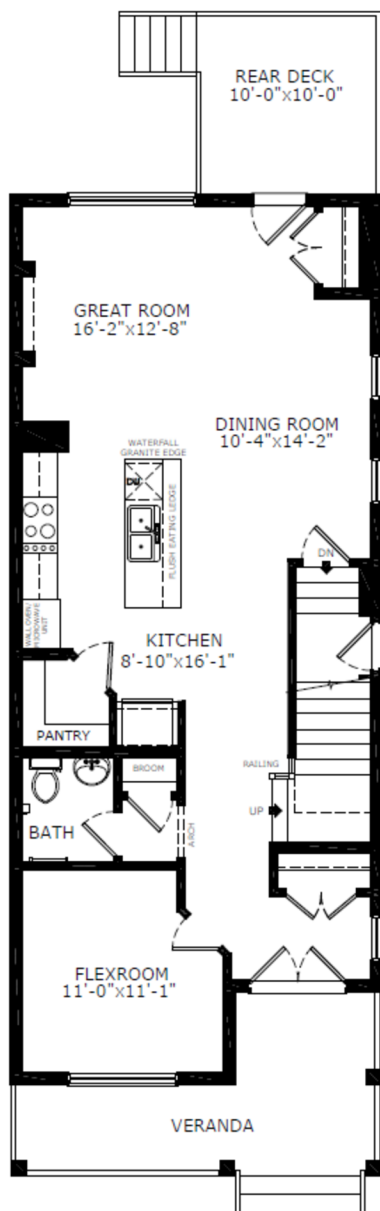


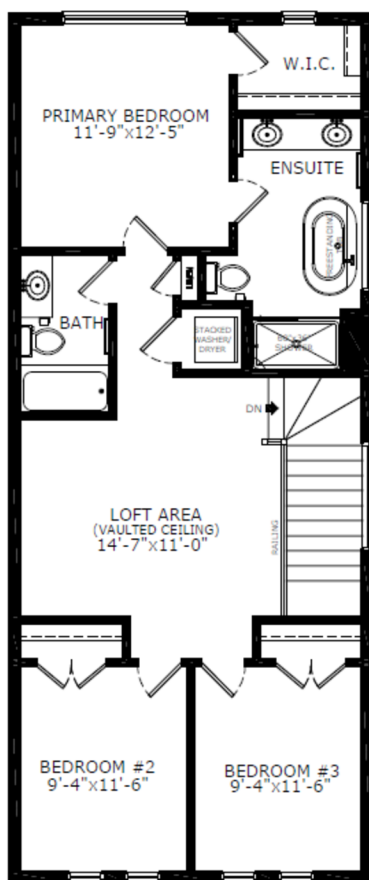
Floorplan



Main Level: 806 sq. ft.



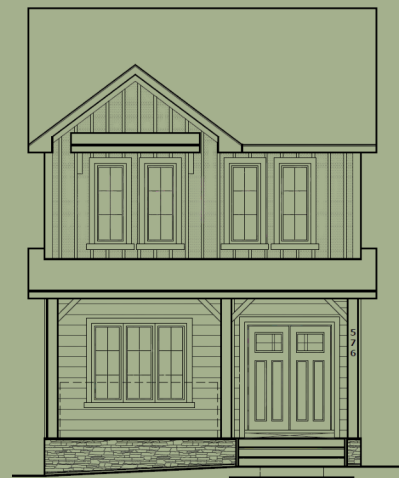
Alex Normandeau
Area Manager



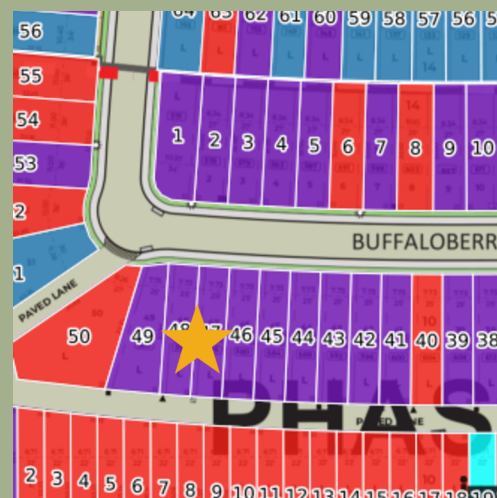
Upper Level: 784 sq. ft.



Myla Sexton
Area Associate



Elevation



Lot Location

Contact:

P: (403) 453-3042

E: loganlanding@sterlingcalgary.com



Total Sq. Ft. - 1820



Bedrooms - 3



Bathrooms - 2.5

Features



Without the Wait homes offer the benefit of moving in sooner, plus include these extra perks:

- **Curated Design:** Most popular floorplans and personalized interiors
- **Smart Energy:** Built-in energy efficiency and Smart Home features
- **Easy Move by Virtuo:** Concierge services, moving totes, and a customer portal app
- **Sterling Built Rewards:** Exclusive perks, offers, and partnerships for homeowners

Home Highlights

- 2025 Specifications
- Basement legal suite rough-in
- Painted basement floor
- 9' basement ceiling
- Side entrance
- 10' x 10' deck with BBQ gasline rough in
- Dual front door entry
- Electric fireplace with tile and maple mantle
- Vaulted ceiling in loft
- LVP throughout main floor
- Front elevation black exterior windows
- Upper floor laundry
- Triple pane windows
- Additional windows

Kitchen Elements

- Executive kitchen with build in stainless-steel appliances and gas range
- Silgranit sink
- Walk-in pantry

Bathroom Elements

- 5-piece ensuite with stand alone tub and shower with tiled walls and fibreglass base
- Tile flooring in ensuite
- Bank of drawers in ensuite
- Quartz countertops with undermount sinks



Home Interiors