

JADE

Address

572 Buffaloberry Manor

Job#

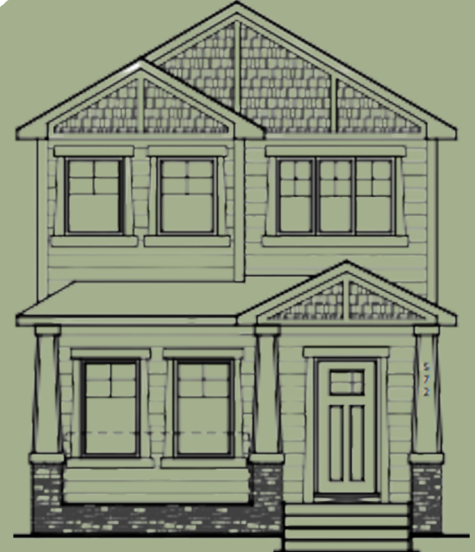
231019

 Total Sq. Ft. - 1891

 Bedrooms - 5

 Bathrooms - 4

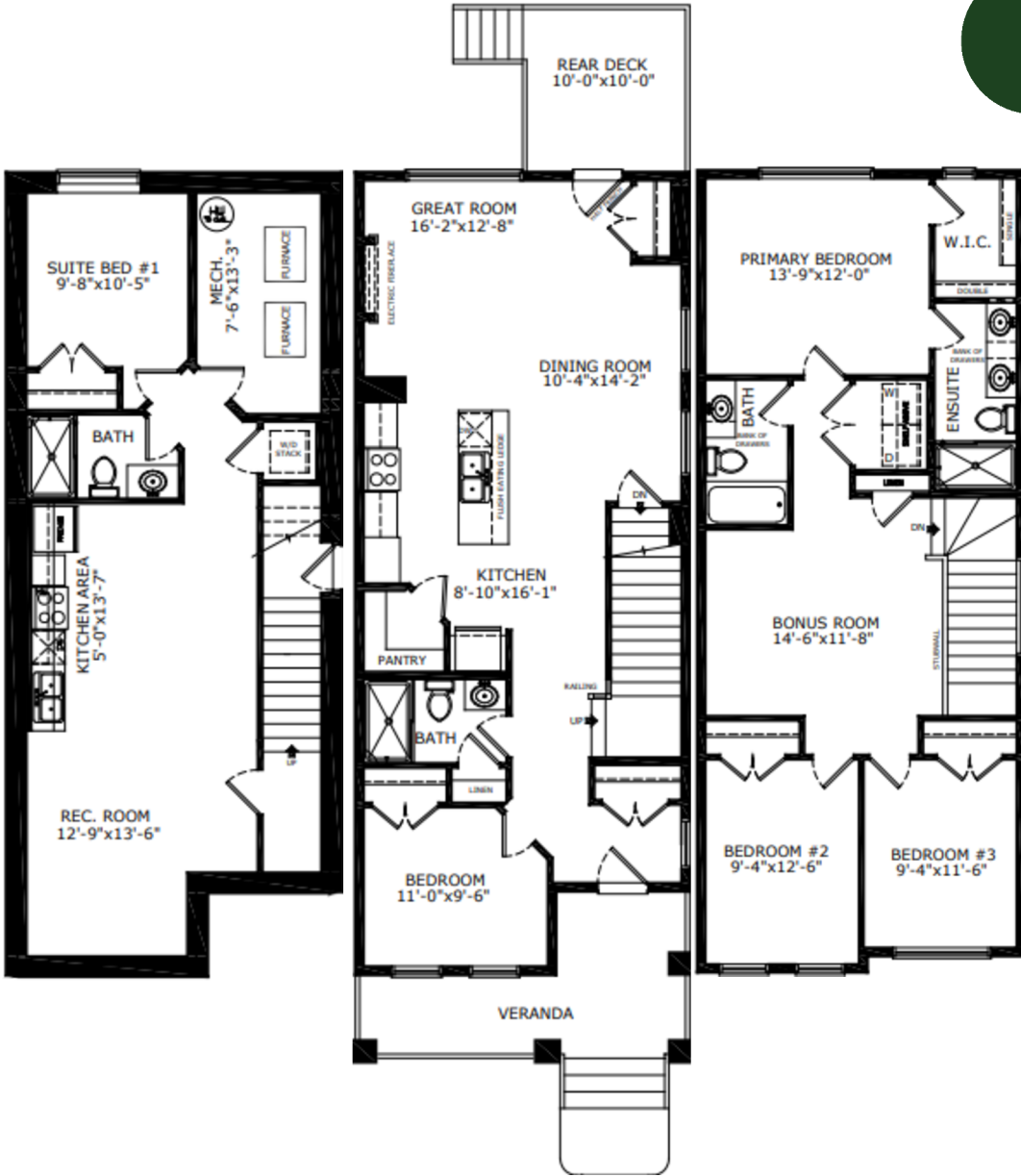
Floorplan



Elevation



Lot Location



Basement: 665 sq. ft. Main Level: 920 sq. ft. Upper Level: 971 sq. ft.



Alex Normandeau
Area Manager



Myla Sexton
Area Associate

Contact:

P: (403) 453-3042

E: loganlanding@sterlingcalgary.com

Features



Without the Wait homes offer the benefit of moving in sooner, plus include these extra perks:

- **Curated Design:** Most popular floorplans and personalized interiors
- **Smart Energy:** Built-in energy efficiency and Smart Home features
- **Easy Move by Virtu:** Concierge services, moving totes, and a customer portal app
- **Sterling Built Rewards:** Exclusive perks, offers, and partnerships for homeowners

Home Highlights

- 2025 Specifications
- 1 bedroom legal suite with separate entrance
- Rear deck with BBQ gasline rough-in
- Front veranda
- Main floor bedroom with full bathroom
- Electric fireplace
- Paint grade railing with iron spindles
- LVP throughout main floor and wet areas
- Tile flooring in ensuite
- Quartz countertops with undermount sinks
- Upper floor laundry
- Triple pane windows

Kitchen Elements

- Stainless steel appliances
- Chimney hoodfan
- Silgranit sink
- Walk-in corner pantry

Bathroom Elements

- 4-piece ensuite with fiberglass base shower with tiled walls
- Bank of drawers in ensuite and main bath vanity
- Fiberglass base shower with tiled walls in main floor and basement bath



Home Interiors