

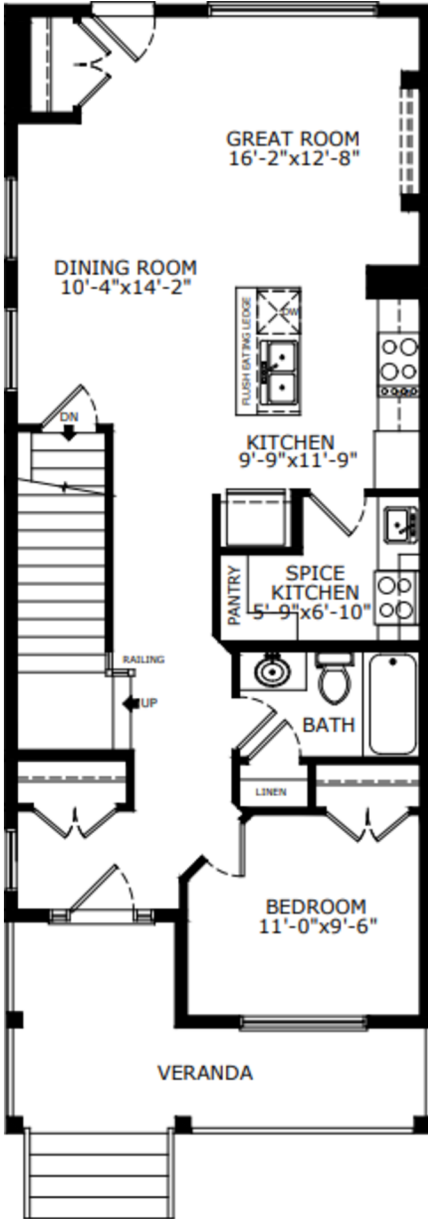
# JADE

Address  
**160 Snowberry Common**

Job#  
**231023**

Total Sq. Ft. - 1880    Bedrooms - 4  
 Bathrooms - 3

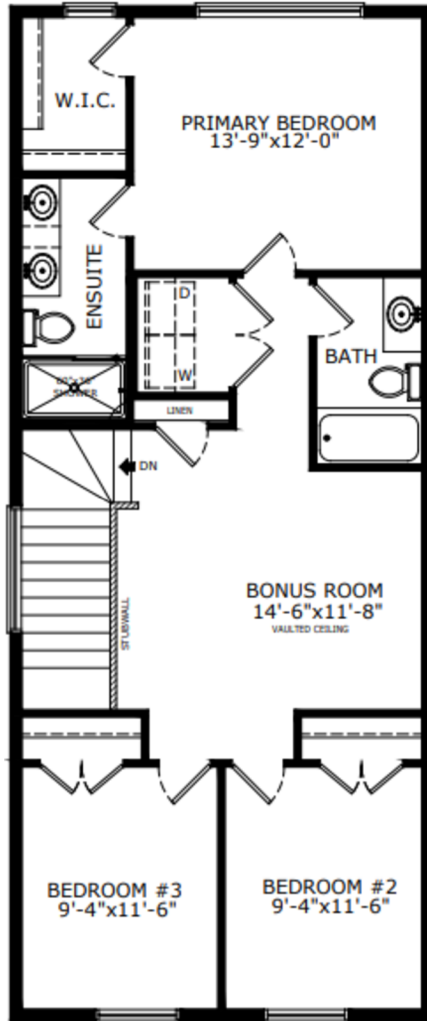
## Floorplan



Main Level: 920 sq. ft.



Demi Bonnet  
Area Manager



Upper Level: 960 sq. ft.



Myla Sexton  
Area Associate



Elevation



Lot Location

### Contact:

P: (403) 453-3042

E: [loganlanding@sterlingcalgary.com](mailto:loganlanding@sterlingcalgary.com)

## Features



Without the Wait homes offer the benefit of moving in sooner, plus include these extra perks:

- **Curated Design:** Most popular floorplans and personalized interiors
- **Smart Energy:** Built-in energy efficiency and Smart Home features
- **Easy Move by Virtu:** Concierge services, moving totes, and a customer portal app
- **Sterling Built Rewards:** Exclusive perks, offers, and partnerships for homeowners

### Home Highlights

- 2025 Specifications
- Front veranda
- Legal suite rough-in
- Side entrance
- 9' basement wall height
- Bedroom and full bathroom on main floor
- Electric fireplace
- Paint grade railing with iron spindles
- Vaulted bonus room
- LVP throughout main floor
- Quartz countertops with undermount sinks
- Triple pane windows

### Kitchen Elements

- Executive kitchen with built-in stainless steel appliances
- Gas cooktop
- Fridge with water and ice dispenser
- Pots and pans drawers
- Silgranit sink
- Spice kitchen with gas range and pantry shelving

### Bathroom Elements

- 4-piece ensuite with fiberglass base shower with tiled walls
- Tile flooring in ensuite
- Bank of drawers in ensuite vanity



## Home Interiors