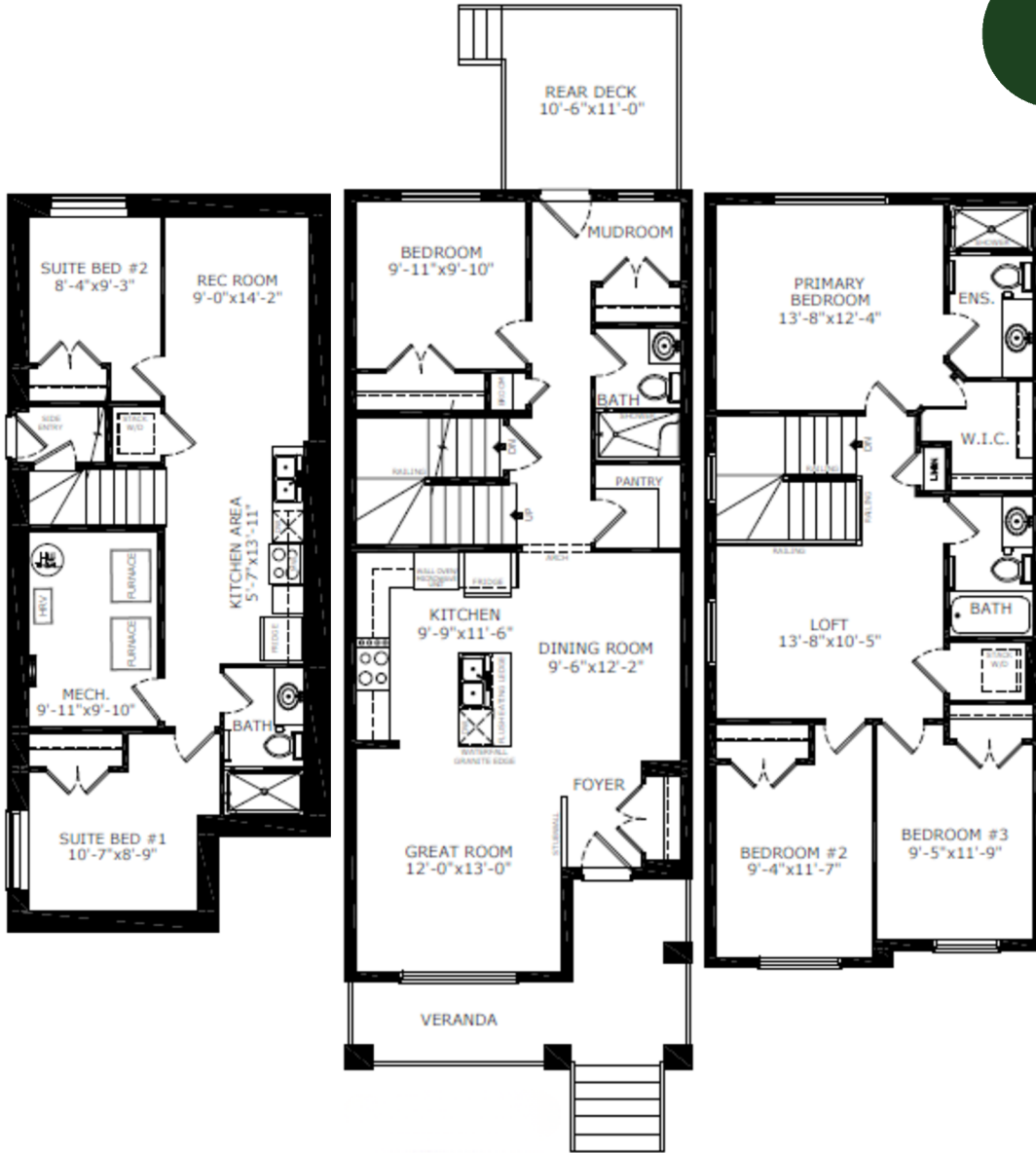
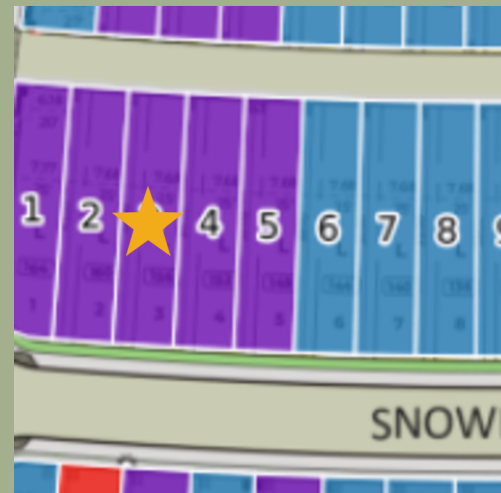


## Floorplan



Elevation



Lot Location

Basement: 639 sq. ft.    Main Level: 878 sq. ft.    Upper Level: 911 sq. ft.



Alex Normandeau  
Area Manager



Myla Sexton  
Area Associate

### Contact:

P: (403) 453-3042

E: [loganlanding@sterlingcalgary.com](mailto:loganlanding@sterlingcalgary.com)

## Features



Without the Wait homes offer the benefit of moving in sooner, plus include these extra perks:

- **Curated Design:** Most popular floorplans and personalized interiors
- **Smart Energy:** Built-in energy efficiency and Smart Home features
- **Easy Move by Virtu:** Concierge services, moving totes, and a customer portal app
- **Sterling Built Rewards:** Exclusive perks, offers, and partnerships for homeowners

### Home Highlights

- 2025 Specifications
- 2 bedroom legal suite
- Separate entrance
- 9' basement ceiling height
- Rear deck with BBQ gasline rough-in
- Front veranda
- Main floor bedroom and full bathroom
- Paint grade railing with iron spindles
- Vaulted loft
- LVP throughout main floor, laundry, basement kitchen and basement bathroom
- Quartz countertops with undermount sinks
- Triple pane windows
- Additional windows

### Kitchen Elements

- Executive kitchen with built-in stainless steel appliances
- Gas cooktop
- Fridge with water and ice dispenser
- Waterfall island
- Silgranit sink
- Walk-in pantry

### Bathroom Elements

- Fiberglass base shower with tiled walls in ensuite and basement bathroom
- Tile flooring in ensuite and main bath
- Bank of drawers in ensuite and main bath
- Fiberglass shower in main floor bath



## Home Interiors