

Address

Job#

**128 Southborough Common 280021**

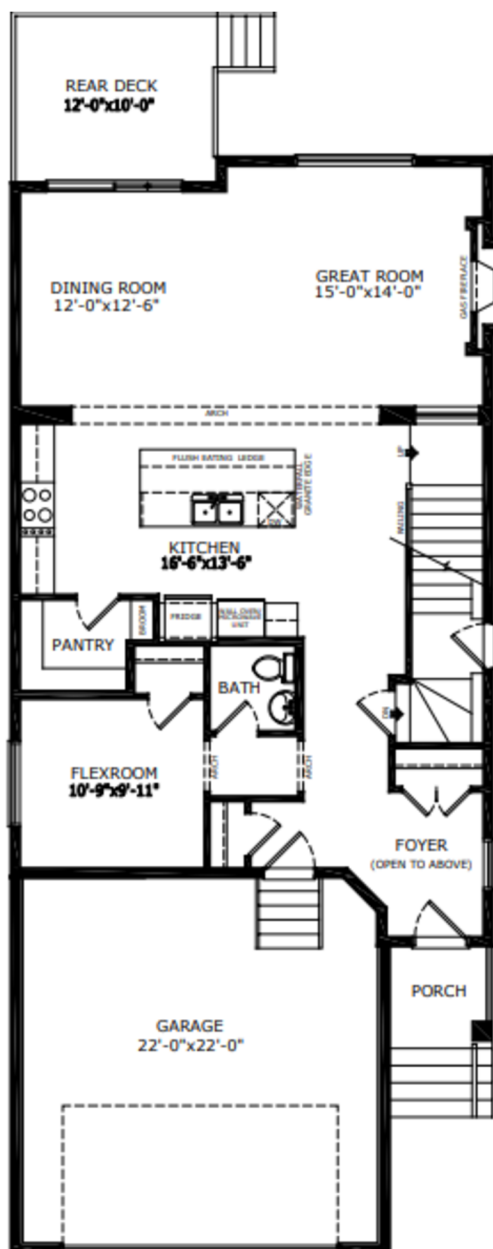
 Total Sq. Ft. - 2659

 Bedrooms - 4

 Bathrooms - 2.5

 Garage - 2 Car

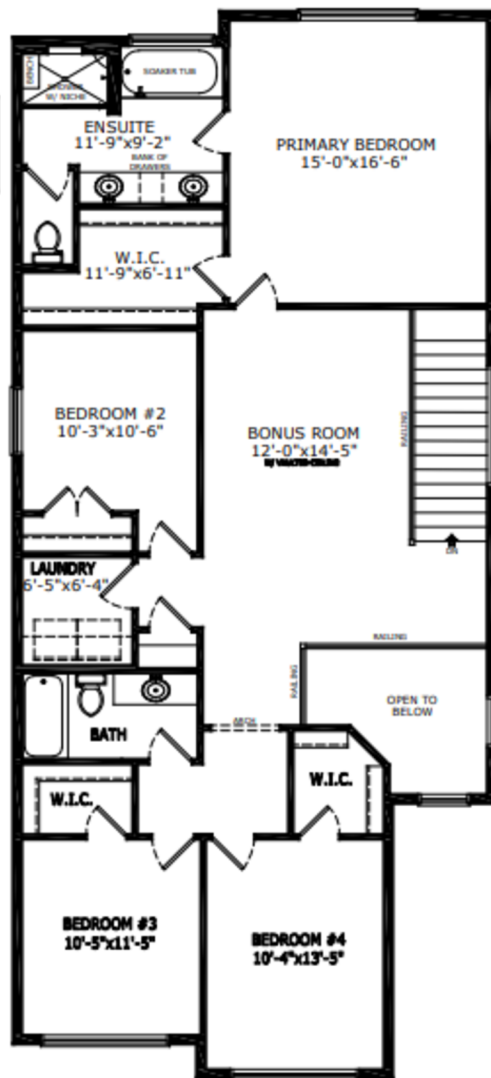
# Floorplan



Main Level: 1187 sq. ft.



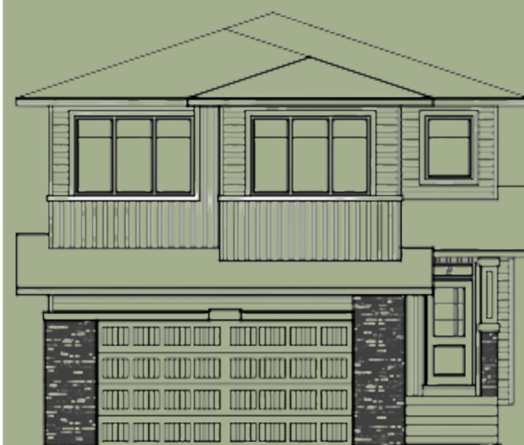
Diane Blackman  
Area Manager



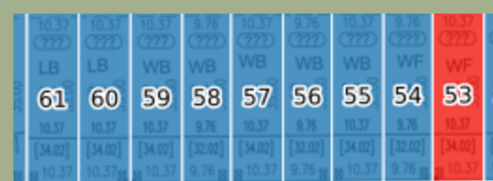
Upper Level: 1472 sq. ft.



Teagan Rohl  
Area Associate



Elevation



### Lot Location

## Contact:

P: (403) 981-2619

E: [southbow@sterlingcalgary.com](mailto:southbow@sterlingcalgary.com)

## Features



**Without the Wait homes offer the benefit of moving in sooner, plus include these extra perks:**

- **Curated Design:** Most popular floorplans and personalized interiors
- **Smart Energy:** Built-in energy efficiency and Smart Home features
- **Easy Move by Virtuio:** Concierge services, moving totes, and a customer portal app
- **Sterling Built Rewards:** Exclusive perks, offers, and partnerships for homeowners

### Home Highlights

- 2025 Specifications
- Side entrance
- 9' basement wall height
- Rear deck with BBQ gasline rough-in
- Developed basement stairwell
- Open to above in foyer
- Main floor flex room
- Gas fireplace with mantle above
- Paint grade railing with iron spindles
- Vaulted bonus room
- Triple pane windows
- Additional windows
- LVP throughout main floor, main bath and laundry
- Quartz countertops

### Kitchen Elements

- Executive kitchen with built-in stainless steel appliances
- Gas cooktop
- Fridge with water and ice dispenser
- Waterfall island
- Pots and pans drawers
- Silgranit sink
- Walk-in pantry

### Bathroom Elements

- 5-piece ensuite with soaker tub and tiled shower with tiled niche
- Tile flooring in ensuite
- Bank of drawers in ensuite vanity



Kitchen



## Home Interiors