

DENALI 6

Address
470 Hotchkiss Manor

Job#
310054

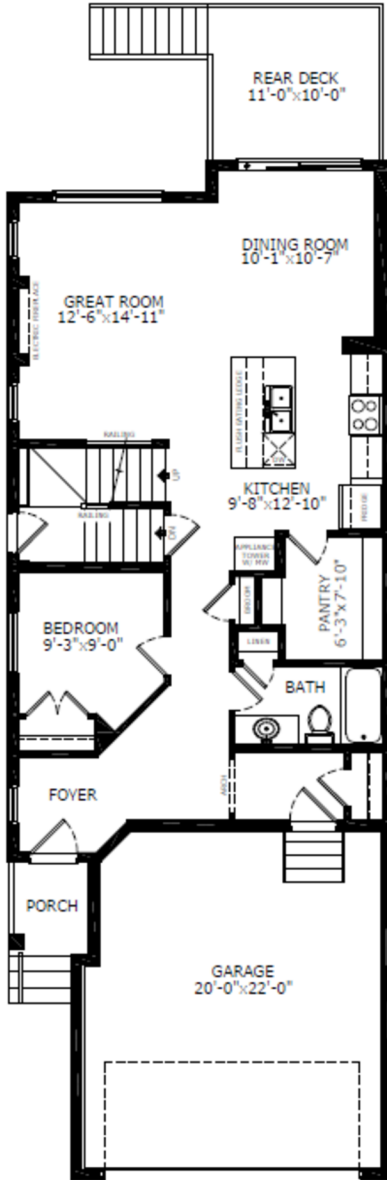
Total Sq. Ft. - 2352

Bedrooms - 5

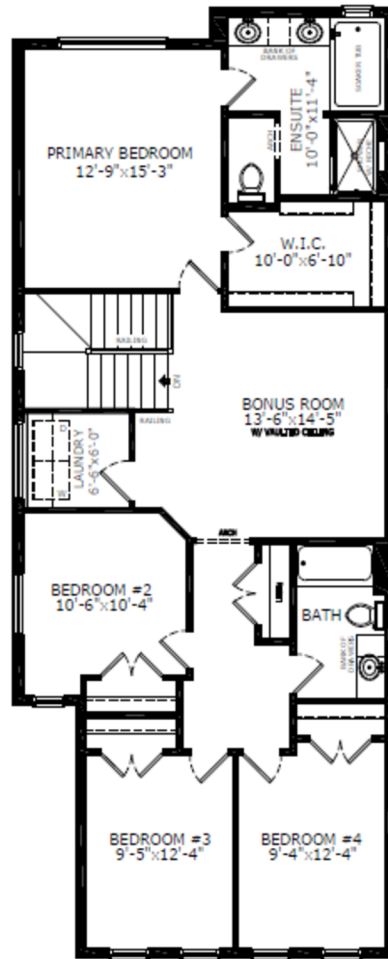
Bathrooms - 3

Garage - 2 Car

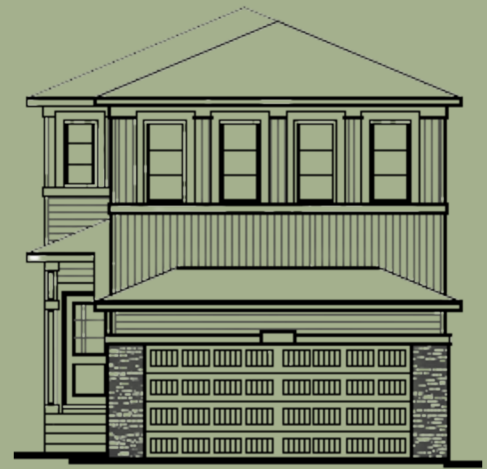
Floorplan



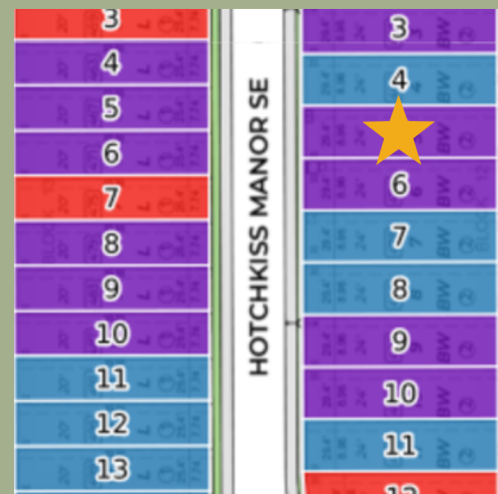
Main Level: 997 sq. ft.



Upper Level: 1355 sq. ft.



Elevation



Lot Location



Sophiah Campbell
Area Manager



Amanda Loh
Area Manager



Emily Spence
Host

Contact:

P: 403-452-3164

E: Hotchkiss@sterlingcalgary.com

Features



Without the Wait homes offer the benefit of moving in sooner, plus include these extra perks:

- **Curated Design:** Most popular floorplans and personalized interiors
- **Smart Energy:** Built-in energy efficiency and Smart Home features
- **Easy Move by Virtu:** Concierge services, moving totes, and a customer portal app
- **Sterling Built Rewards:** Exclusive perks, offers, and partnerships for homeowners

Home Highlights

- 2025 Specifications
- Side entrance
- 9' basement ceilings
- Rear deck with BBQ gasline rough-in
- Main floor bedroom and full bathroom
- Electric fireplace with paint grade mantel and tile below
- Paint grade railing with iron spindles
- Vaulted bonus room
- LVP throughout main floor
- Quartz countertops with undermount sinks
- Additional windows

Kitchen Elements

- Stainless steel appliances with chimney hoodfan and built-in microwave
- Gas line rough-in for future range
- Pendant lighting
- Walk-in pantry



Kitchen

Bathroom Elements

- 5-piece ensuite with soaker tub
- Fiberglass base shower with tiled walls and niche with glass barn door
- Bank of drawers in ensuite and main bath



Home Interiors