

BIRKLEY

Address

478 Hotchkiss Manor SE

Job#

310056

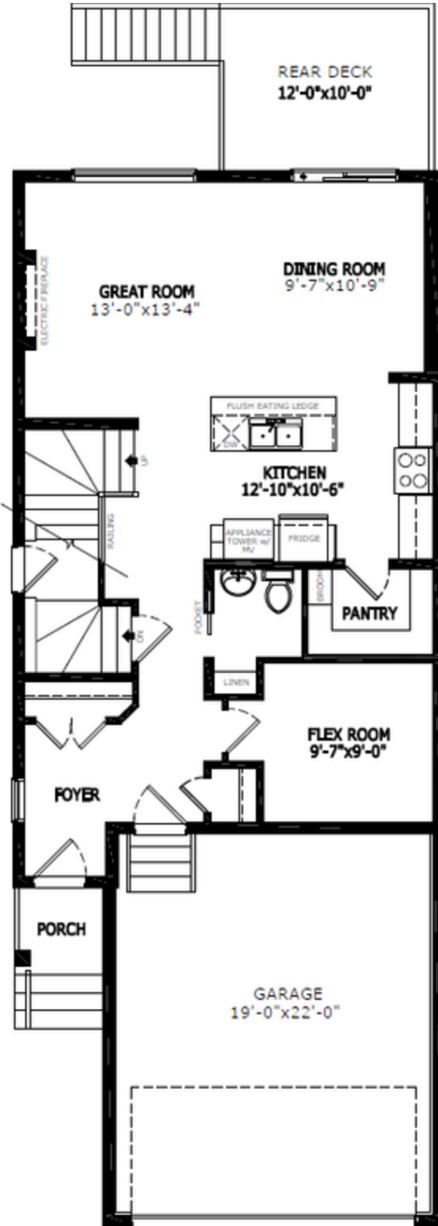
Total Sq. Ft. - 2094

Bedrooms - 3

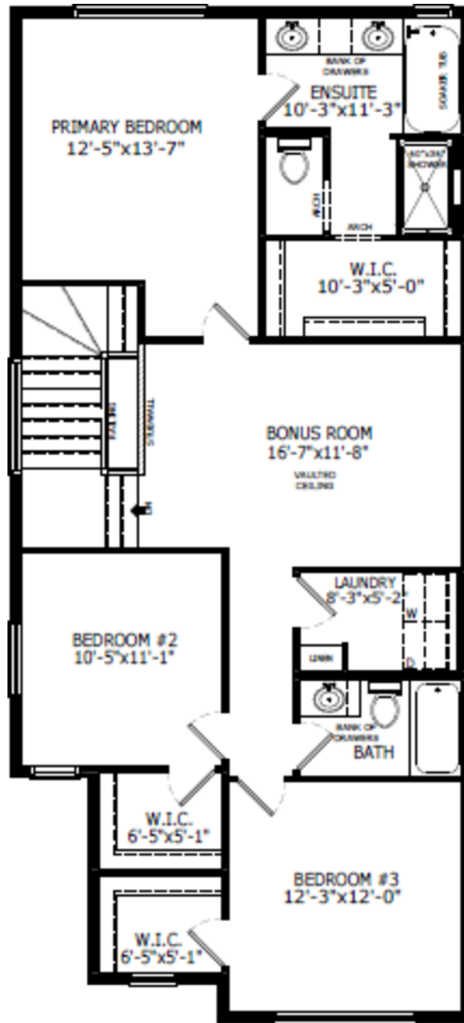
Bathrooms - 2.5

Garage - 2 Car

Floorplan



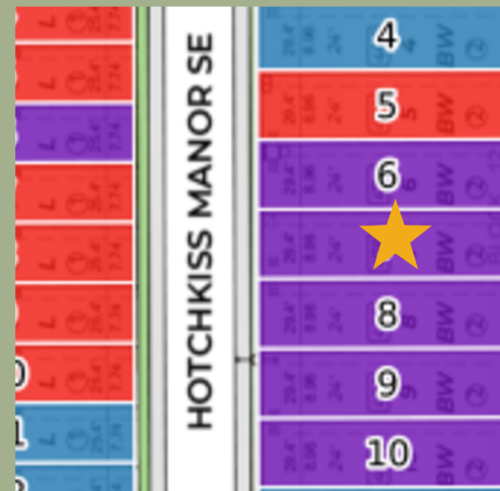
Main Level: 905 sq. ft.



Upper Level: 1189 sq. ft.



Elevation



Lot Location



Sophiah Campbell
Area Manager



Amanda Loh
Area Manager



Emily Spence
Area Associate

Contact:

P: 403-452-3164

E: hotchkiss@sterlingcalgary.com

Features



Without the Wait homes offer the benefit of moving in sooner, plus include these extra perks:

- **Curated Design:** Most popular floorplans and personalized interiors
- **Smart Energy:** Built-in energy efficiency and Smart Home features
- **Easy Move by Virtu:** Concierge services, moving totes, and a customer portal app
- **Sterling Built Rewards:** Exclusive perks, offers, and partnerships for homeowners

Home Highlights

- 2025 Specifications
- Sunshine lot
- 9' basement ceiling
- Side door
- Rear deck with BBQ gasline rough-in
- Main floor flex room with wall detail and french door
- Electric fireplace with maple mantle and tile below
- Maple railing with iron spindles
- Vaulted bonus room
- Quartz countertops with undermount sinks
- LVP throughout main floor
- Additional windows

Kitchen Elements

- Stainless steel appliances
- Chimney hoodfan with built-in microwave
- Gasline for range
- Pendant lighting
- Walk-in pantry with french door



Kitchen

Bathroom Elements

- 5-piece ensuite with soaker tub
- Fiberglass base shower with tiled walls and tiled niche in ensuite
- Bank of drawers in ensuite and main bath vanities



Home Interiors