

AMBER

Address
73 Versant Point SW

Job#
380090

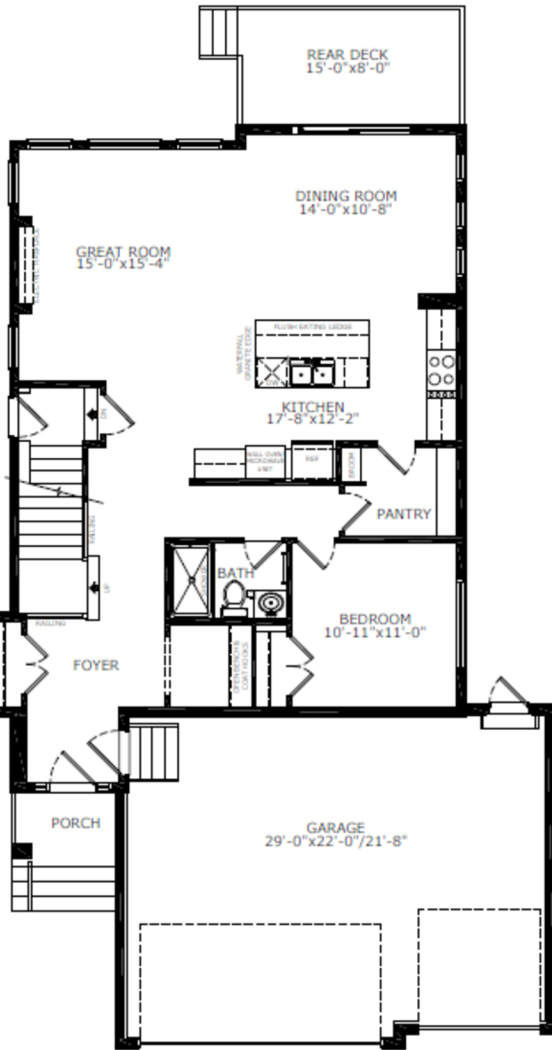
Total Sq. Ft. - 2614

Bedrooms - 4

Bathrooms - 3

Garage - 3 Car

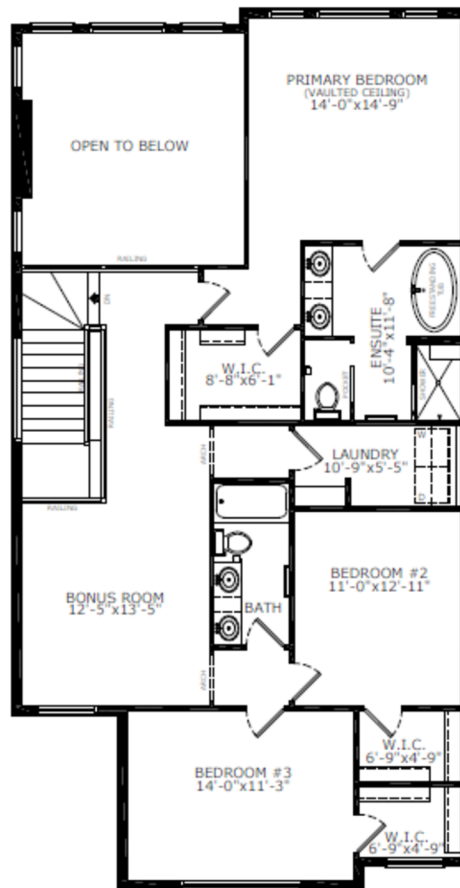
Floorplan



Main Level: 1212 sq. ft.



Lauren McCarthy
Area Manager



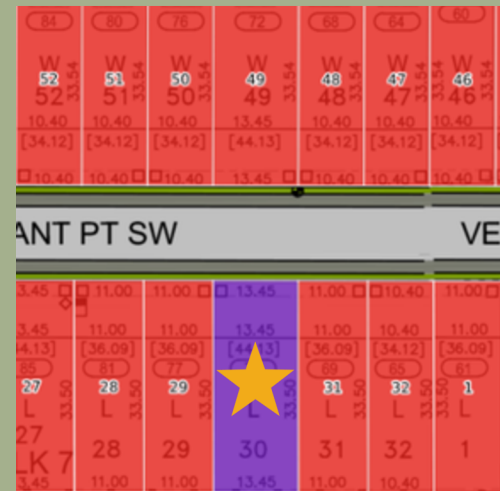
Upper Level: 1402 sq. ft.



Alix Gusdal
Area Associate



Elevation



Lot Location

Contact:

P: (403) 452-3538

E: vermilionhill@sterlingcalgary.com

Features



Without the Wait homes offer the benefit of moving in sooner, plus include these extra perks:

- **Curated Design:** Most popular floorplans and personalized interiors
- **Smart Energy:** Built-in energy efficiency and Smart Home features
- **Easy Move by Virtu:** Concierge services, moving totes, and a customer portal app
- **Sterling Built Rewards:** Exclusive perks, offers, and partnerships for homeowners

Home Highlights

- 2025 Specifications
- Side entrance
- Triple car garage
- 1 Bedroom legal suite rough-in
- 9ft ceilings throughout
- Rear deck with BBQ gasline rough-in
- Main floor bedroom and full bath
- Electric fireplace with drywall ledge
- Maple railing with iron spindles
- Open bench and coat rack with cubbies, shiplap detail and arch in mudroom
- LVP throughout main floor, stairs and upper floor common areas
- Vaulted ceiling and wall detail in primary bedroom
- 8' doors throughout
- Additional windows
- James Hardie exterior with upgraded black exterior windows on front and rear

Kitchen Elements

- Executive kitchen with stainless steel built-in appliances, cabinet chimney hoodfan, gas cooktop
- 48" Upper Cabinets
- Quartz backsplash
- Under cabinet lighting
- Waste bin pullout
- Island pendants
- Walk through pantry with MDF shelving



Kitchen

Bathroom Elements

- 5-piece ensuite with free standing tub
- Fully tiled shower in ensuite with bench and barn glass door
- Bank of drawers in ensuite and main bath
- Dual sinks in main bath
- Tile flooring in all baths and laundry
- Quartz backsplash
- Fiberglass base shower with tiled walls in main floor bath
- Black Hardware



Home Interiors