

# BIRKLEY 2

Address  
**462 Bighorn Ave**

Job#  
**380121**

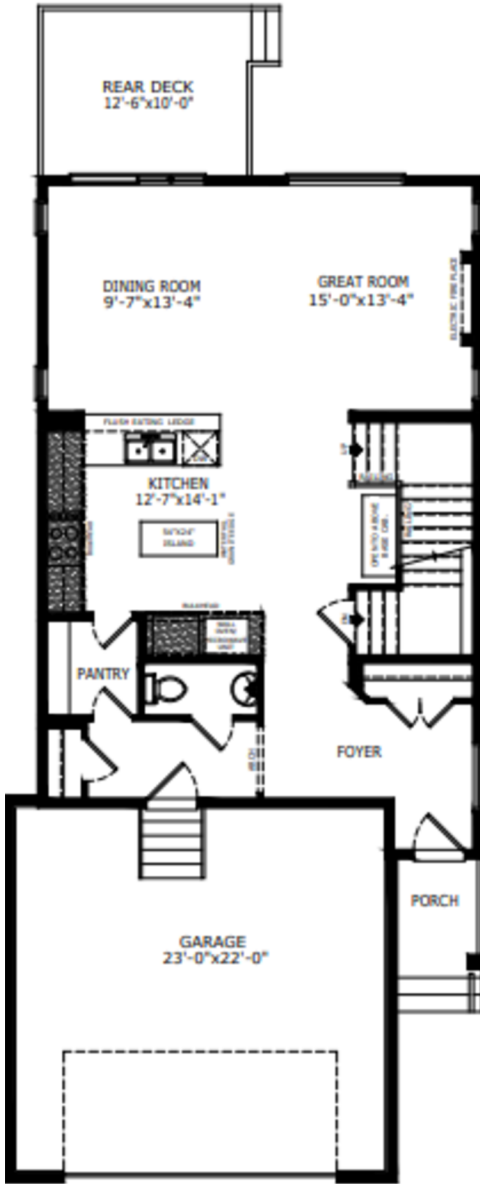
Total Sq. Ft. - 2291

Bedrooms - 4

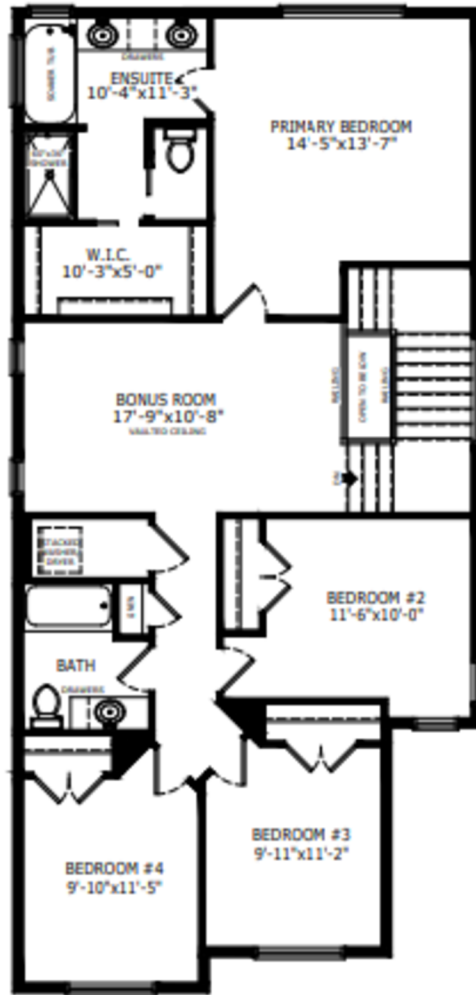
Bathrooms - 2.5

Garage - 2 Car

## Floorplan



Main Level: 979 sq. ft.



Upper Level: 1312 sq. ft.



Elevation



Lot Location



Lauren McCarthy  
Area Manager



Michael Cornell  
Area Associate

### Contact:

P: (403) 452-3538

E: [vermilionhill@sterlingcalgary.com](mailto:vermilionhill@sterlingcalgary.com)

## Features

### Home Highlights

- 2025 Specifications
- Side entrance
- Widened garage
- 8' tall garage door
- Rear deck with BBQ gasoline rough-in
- Mudroom built-in bench with coat hooks, cubbies and shiplap detail
- Electric fireplace with maple mantle and shiplap detail
- Maple railing with iron spindles
- Vaulted bonus room
- Wall detail in primary bedroom
- LVP throughout main floor
- Quartz countertops with undermount sinks
- Triple pane windows
- Additional windows

### Kitchen Elements

- Executive kitchen with built-in stainless steel appliances
- Gas cooktop and fridge with water and ice dispenser
- Walk-through pantry
- Pendant lighting
- Waterfall island
- Silgranit sink
- Pots and pans drawers

### Bathroom Elements

- 5-piece ensuite with fiberglass base shower with tiled walls
- Tile flooring in bathrooms and laundry
- Bank of drawers in ensuite and main bath vanity



Without the Wait homes offer the benefit of moving in sooner, plus include these extra perks:

- **Curated Design:** Most popular floorplans and personalized interiors
- **Smart Energy:** Built-in energy efficiency and Smart Home features
- **Easy Move by Virtu:** Concierge services, moving totes, and a customer portal app
- **Sterling Built Rewards:** Exclusive perks, offers, and partnerships for homeowners



Kitchen



## Home Interiors