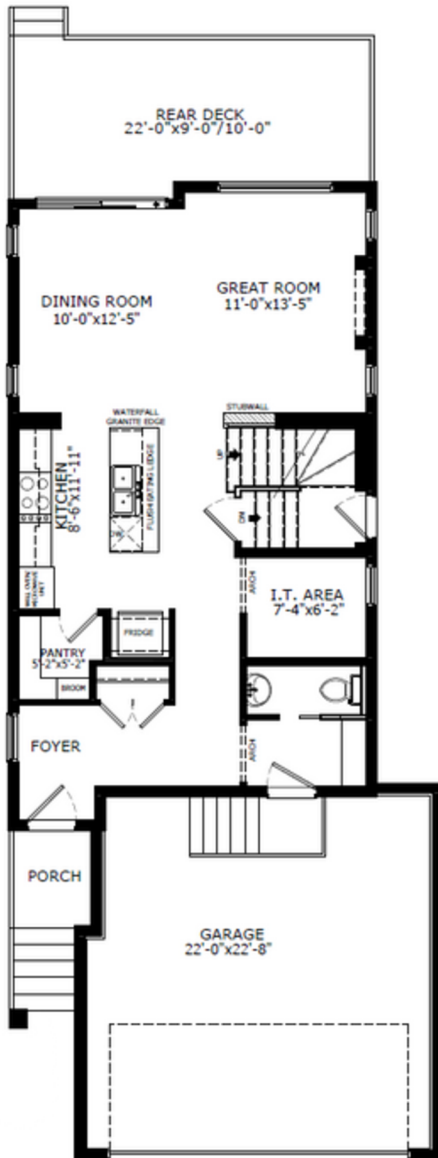
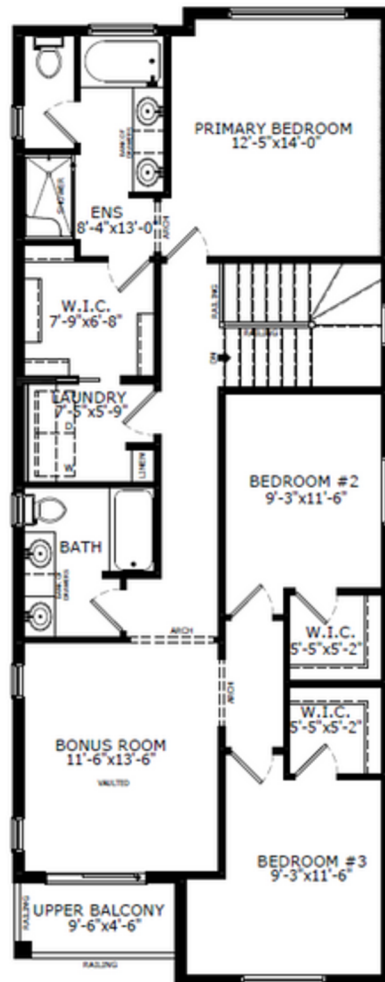


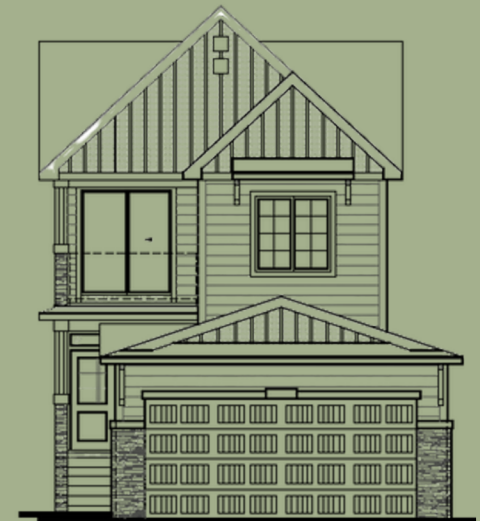
## Floorplan



Main Level: 816 sq. ft.



Upper Level: 1119 sq. ft.



Elevation



Lot Location



Lauren McCarthy  
Area Manager



Alix Gusdal  
Area Associate

### Contact:

P: (403) 452-3538

E: [vermilionhill@sterlingcalgary.com](mailto:vermilionhill@sterlingcalgary.com)

## Features

### Home Highlights

- 2025 Specifications
- Side entrance
- Widened garage
- Rear deck with BBQ gasoline rough-in
- 2nd floor balcony
- Mudroom built-in open bench and coat rack with cubbies
- Main floor I.T area with rounded arch
- Electric fireplace with wall detail
- Maple railing with iron spindles
- Vaulted bonus room
- Wall detail in primary bedroom
- LVP throughout main floor
- Additional windows
- James Hardie siding with black windows

### Kitchen Elements

- Executive kitchen with built-in stainless steel appliances, cabinet style chimney hoodfan and gas cooktop
- Walk-in pantry
- Under cabinet lighting
- 48" upper cabinets
- Pendant lighting

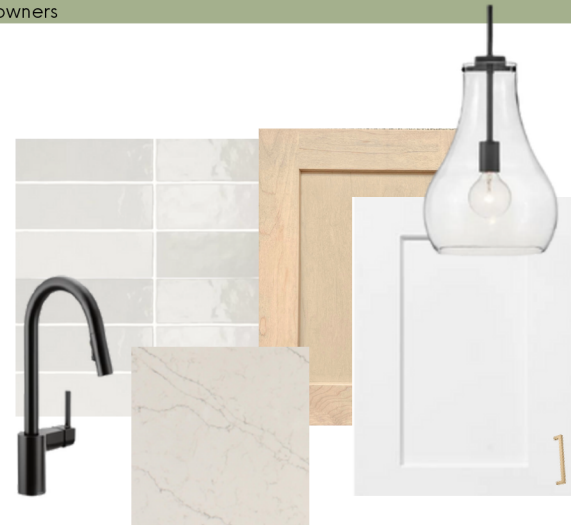
### Bathroom Elements

- 5-piece ensuite with soaker tub
- Fiberglass base shower with tiled walls and glass barn door in ensuite
- Tile flooring in all bathrooms and laundry
- Bank of drawers in ensuite and main bath vanity



**Without the Wait homes offer the benefit of moving in sooner, plus include these extra perks:**

- **Curated Design:** Most popular floorplans and personalized interiors
- **Smart Energy:** Built-in energy efficiency and Smart Home features
- **Easy Move by Virtuo:** Concierge services, moving totes, and a customer portal app
- **Sterling Built Rewards:** Exclusive perks, offers, and partnerships for homeowners



Kitchen



## Home Interiors