



\*Concept only, for specific elevation see reverse side.



Homes built by Sterling Homes are 20% more energy-efficient than the average home. This means you'll enjoy lower utility bills and a more comfortable living environment, all while being kind to the planet!



### Kitchen

- Executive kitchen layout
- Built-in stainless steel appliances
- Silgranit sink
- Walk-in pantry
- Open shelves in island
- Tiled backsplash

### Bathrooms

- Vinyl floor in ensuite, main bath & laundry room
- Tiled ensuite shower walls
- Bank of drawers in ensuite and main bath
- 5-piece ensuite with dual sinks and private water closet

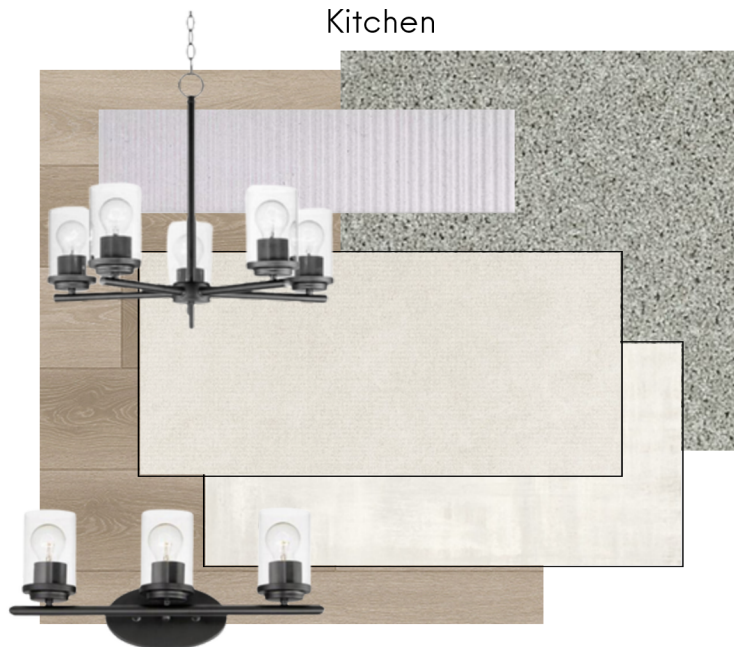
### Convenience

- 2024 specifications
- 9' basement ceiling
- Main floor flex room
- Main floor half bath
- Open bench and coat rack in mudroom

### Rest of Home

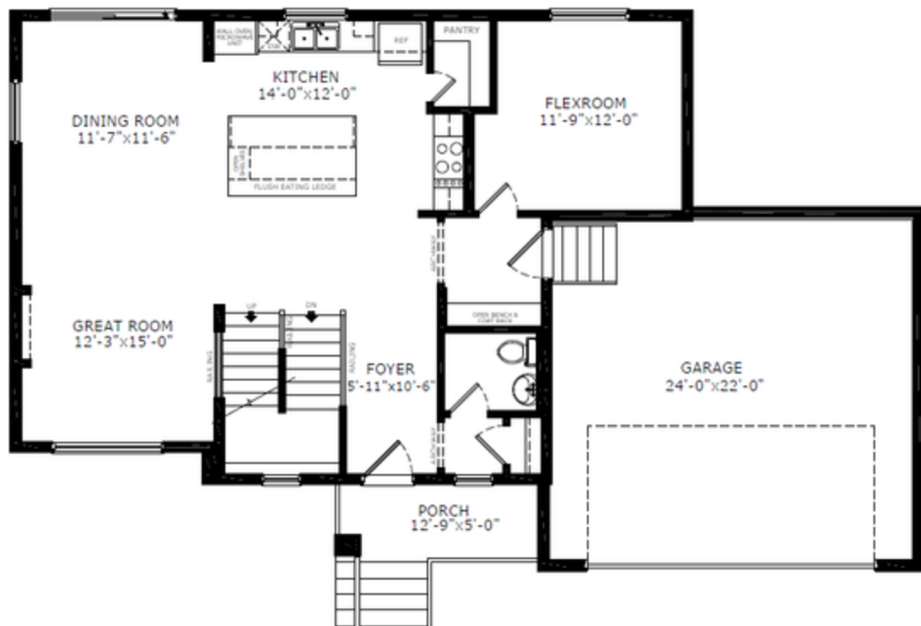
- Maple grade railing with iron spindles
- Upper floor bonus room with vaulted ceiling
- Electric fireplace with painted maple cap

### Kitchen

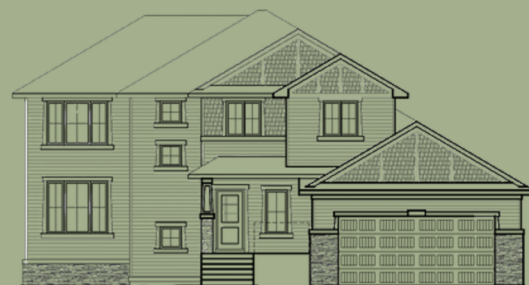


### Home Interiors

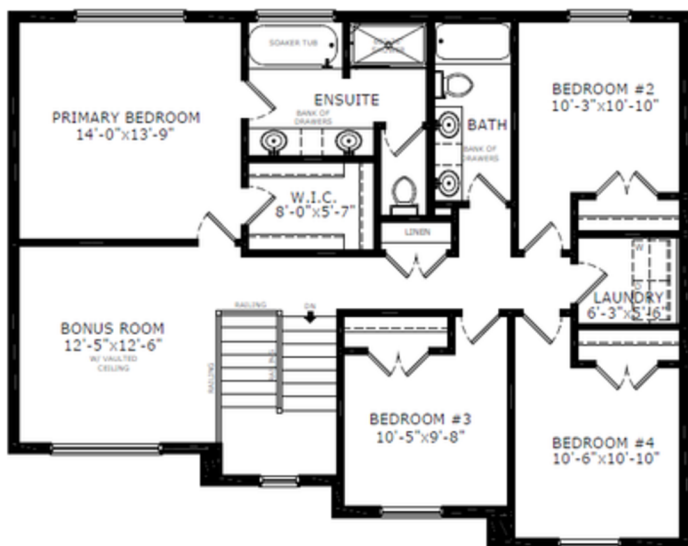
# Floorplan



Main Level: 1084 sq. ft.



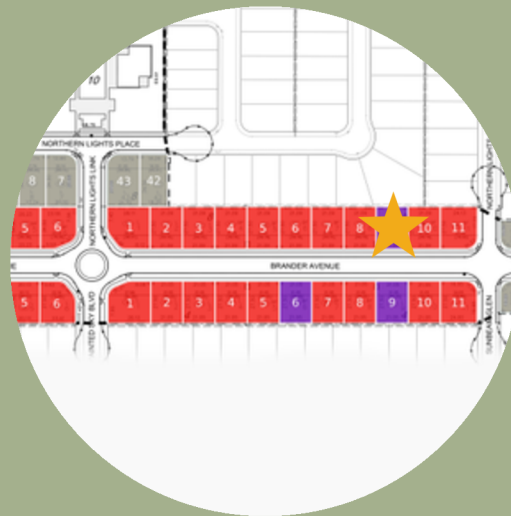
Elevation



Upper Level: 1227 sq. ft.



Cheryl Mason  
Area Manager



Lot Location

## Contact:

P: (403)803-0900

E: [paintedsky@sterlingcalgary.com](mailto:paintedsky@sterlingcalgary.com)