





# DENALI 6



## 26 Saddlebred Court

📍 - Heartland, Cochrane  
Job # 68043

-  **Total Sq. Ft. - 2228**
-  **Bedrooms - 3**
-  **Bathrooms - 2.5**
-  **Garage - 2 Car**

- 9' ceiling on main floor
- Knockdown ceilings in developed areas
- 9' basement ceiling
- Side entrance
- Kitchen with stainless steel kitchen appliances, extra pots/pans drawers, waterline to fridge, gas line to range, chimney hood fan with built-in microwave, and walk-in pantry
- Luxury Vinyl Plank (LVP) on main floor
- Extra windows throughout
- Quartz countertops with undermount sinks throughout
- Main floor flex room
- Electric fireplace with wall detail
- Paint grade railing with iron spindles
- Vaulted ceiling in bonus room
- 5-piece ensuite including soaker tub, dual sinks with bank of drawers, and walk-in shower with three tiled walls to the ceiling; fiberglass base; and 6-mil sliding glass barn door
- East facing backyard with 11'6"x10' deck
- Gas line for BBQ
- February 2023 specifications



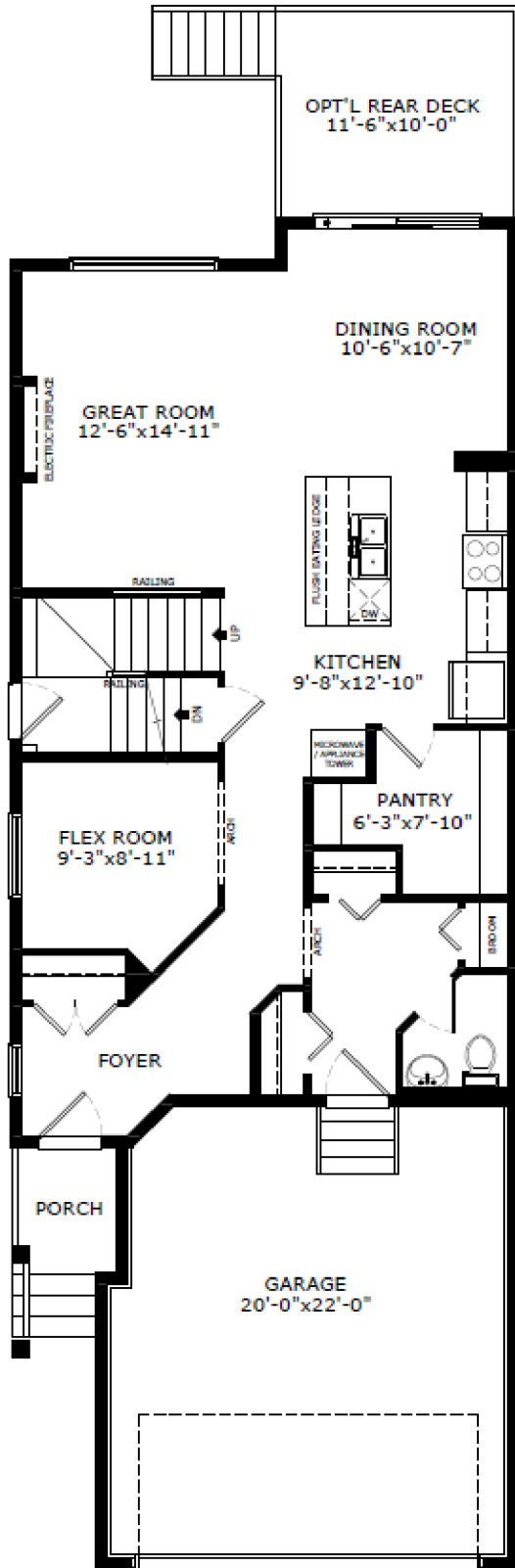
Contact: Diane Blackman

P: 403-981-0073 E: heartland@sterlingcalgary.com

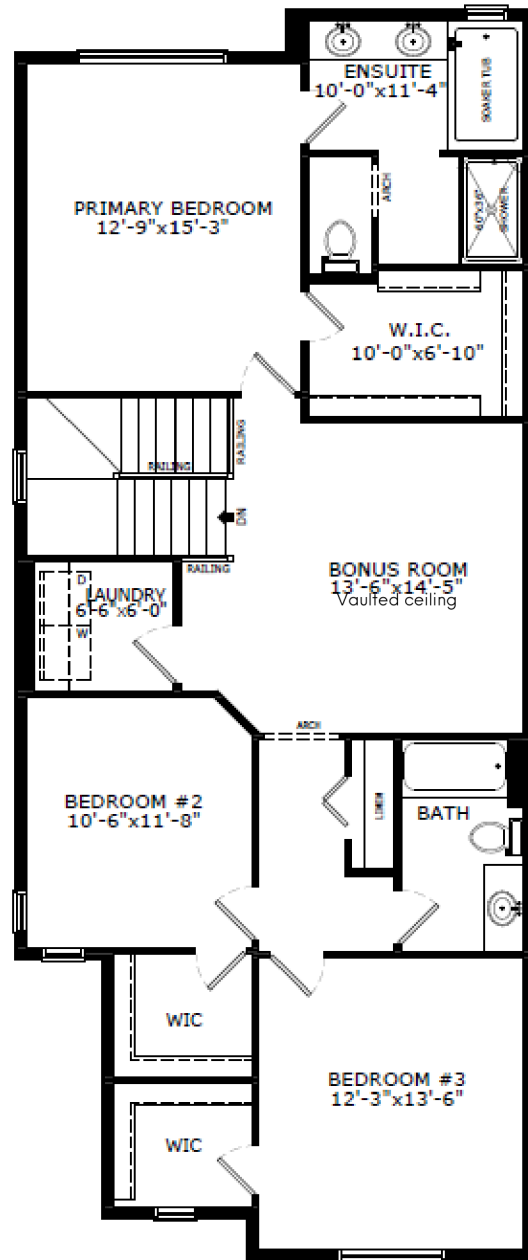
# DENALI 6

**Sterling**  
HOMES

A QUALICO Company



Main Level: 997 sq. ft.



Upper Level: 1231 sq. ft.