







22 Saddlebred Court

📍 - Heartland, Cochrane
Job # 68044

-  **Total Sq. Ft. - 2108**
-  **Bedrooms - 3**
-  **Bathrooms - 2.5**
-  **Garage - 2 Car**

- 9' ceiling on main floor
- 9' basement ceiling
- Knockdown ceilings in developed areas
- Kitchen with stainless steel kitchen appliances, extra pots/pans drawer, water line to fridge, gas line to range, chimney hood fan and walk-through pantry
- Mudroom built-in bench and locker system
- Luxury Vinyl Plank (LVP) on main floor
- Extra windows throughout
- Quartz countertops with undermount sinks throughout
- Gas fireplace with mantle and niche
- Paint grade railing with iron spindles
- Vaulted ceiling in bonus room
- Walk-in closets in all bedrooms
- 5-piece ensuite including soaker tub, dual sinks with bank of drawers, and walk-in shower with three tiled walls to the ceiling, fiberglass base, and sliding barn door
- East facing backyard
- Double car garage
- February 2023 specifications



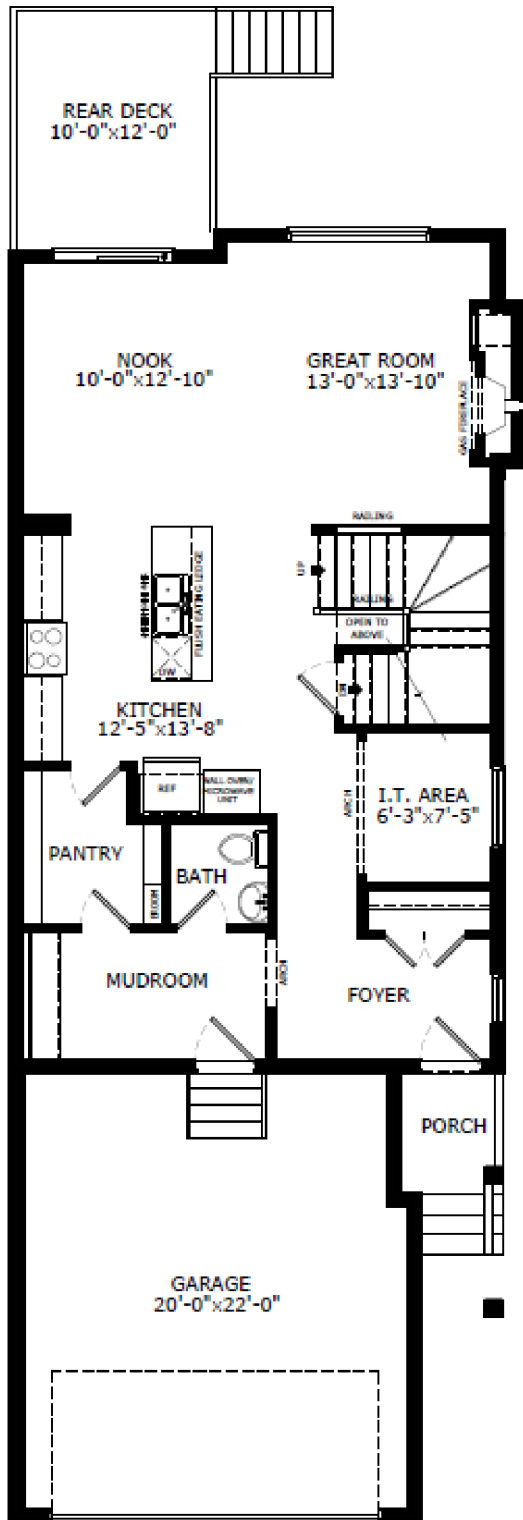
Contact: Diane Blackman

P: 403-981-0073 E: heartland@sterlingcalgary.com

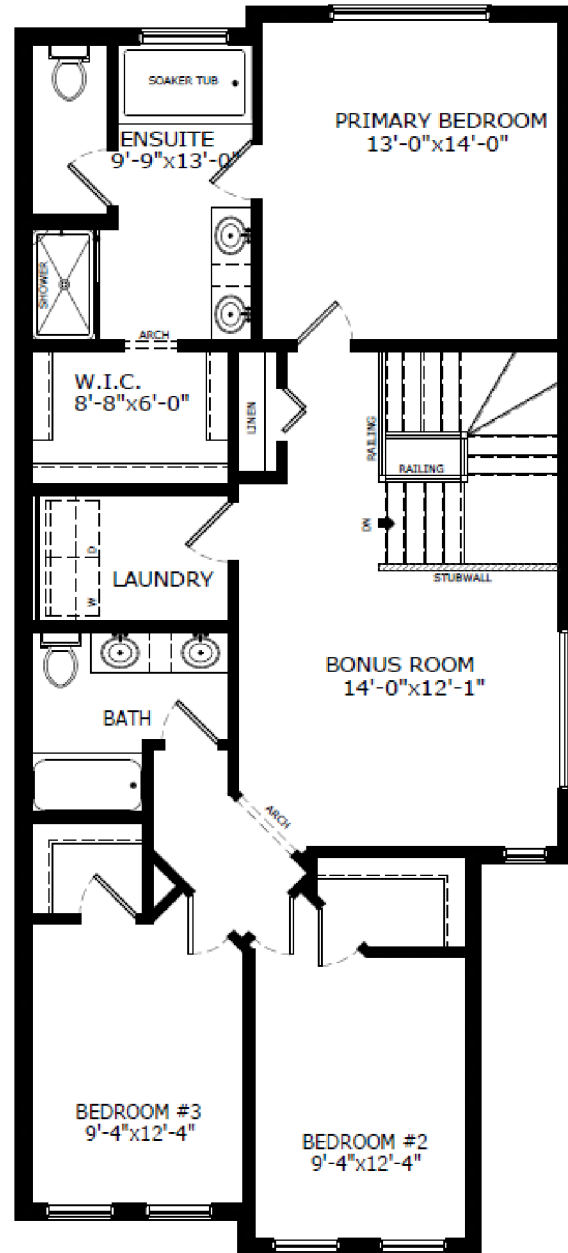
ASHTON

Sterling HOMES

A QUALICO[®] Company



Main Level: 974 sq. ft.



Upper Level: 1134 sq. ft.