







14 Saddlebred Court

📍 - Heartland, Cochrane
Job # 68046

-  **Total Sq. Ft. - 2217**
-  **Bedrooms - 4**
-  **Bathrooms - 2.5**
-  **Garage - 2 Car**

- 9' ceiling on main floor
- Knockdown ceilings in developed areas
- Kitchen with stainless steel kitchen appliances, extra pots/pans drawers, water line to fridge, gas line to range, chimney hood fan and walk-through pantry
- Luxury Vinyl Plank (LVP) on main floor
- Extra windows throughout
- Quartz countertops with undermount sinks throughout
- Main floor flex room
- Gas fireplace with tile surround and mantle
- Paint grade railing with iron spindles
- Vaulted ceiling in bonus room
- 5-piece ensuite including soaker tub, dual sinks with bank of drawers, and walk-in shower with three tiled walls to the ceiling, fiberglass base, and sliding glass barn door
- East facing backyard
- Gas line for BBQ
- Double car garage
- February 2023 specifications



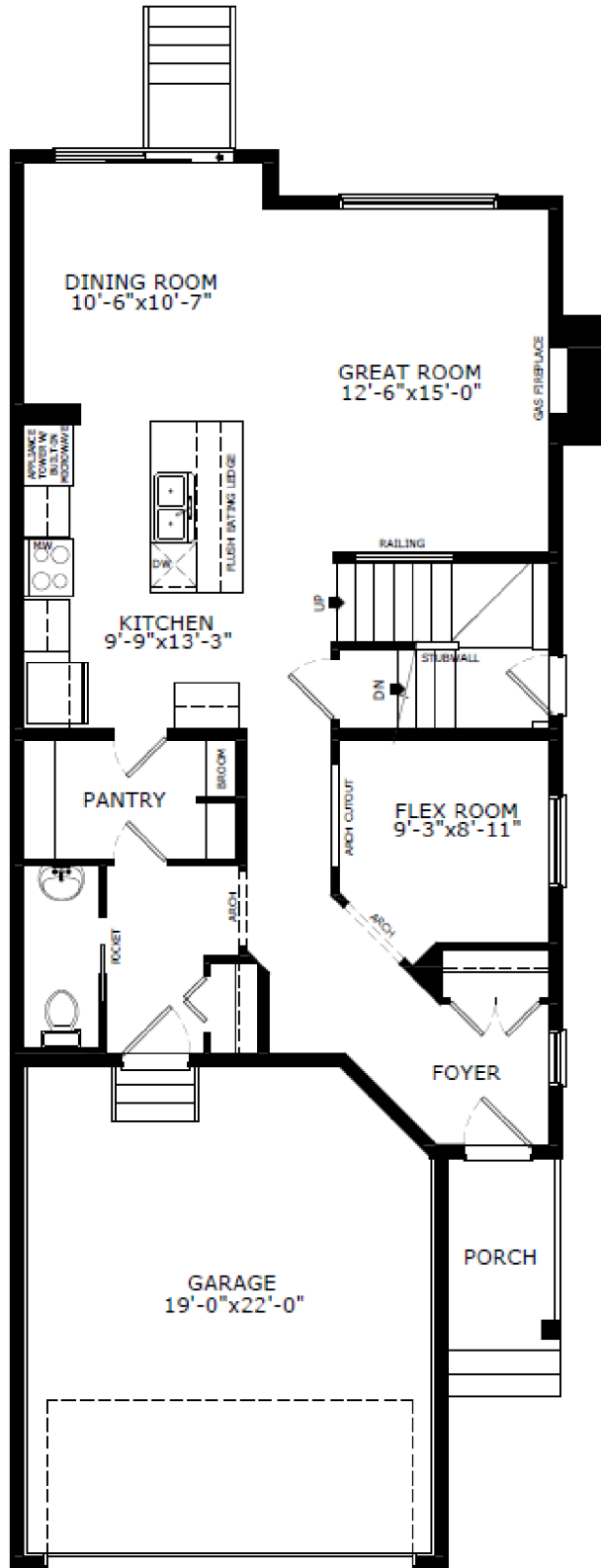
Contact: Diane Blackman

P: 403-981-0073 E: heartland@sterlingcalgary.com

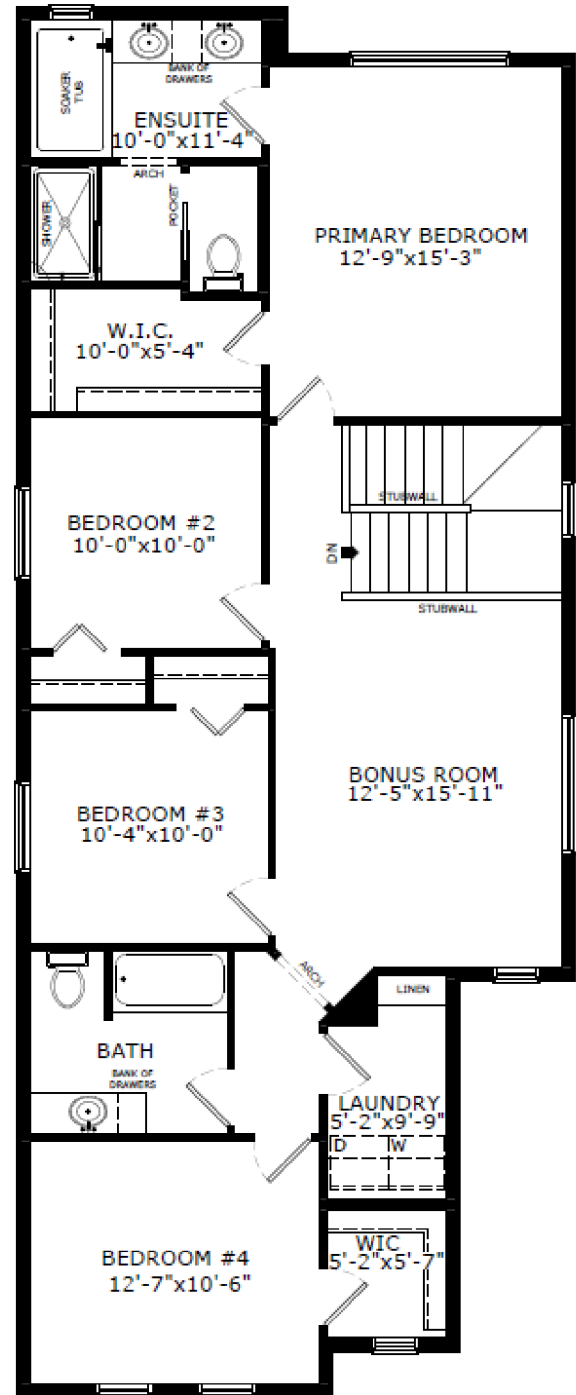
DENALI 4

Sterling
HOMES

A QUALICO Company



Main Level: 966 sq. ft.



Upper Level: 1251 sq. ft.