
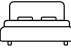






174 Saddlebred Place

📍 - Heartland, Cochrane
Job # 68047

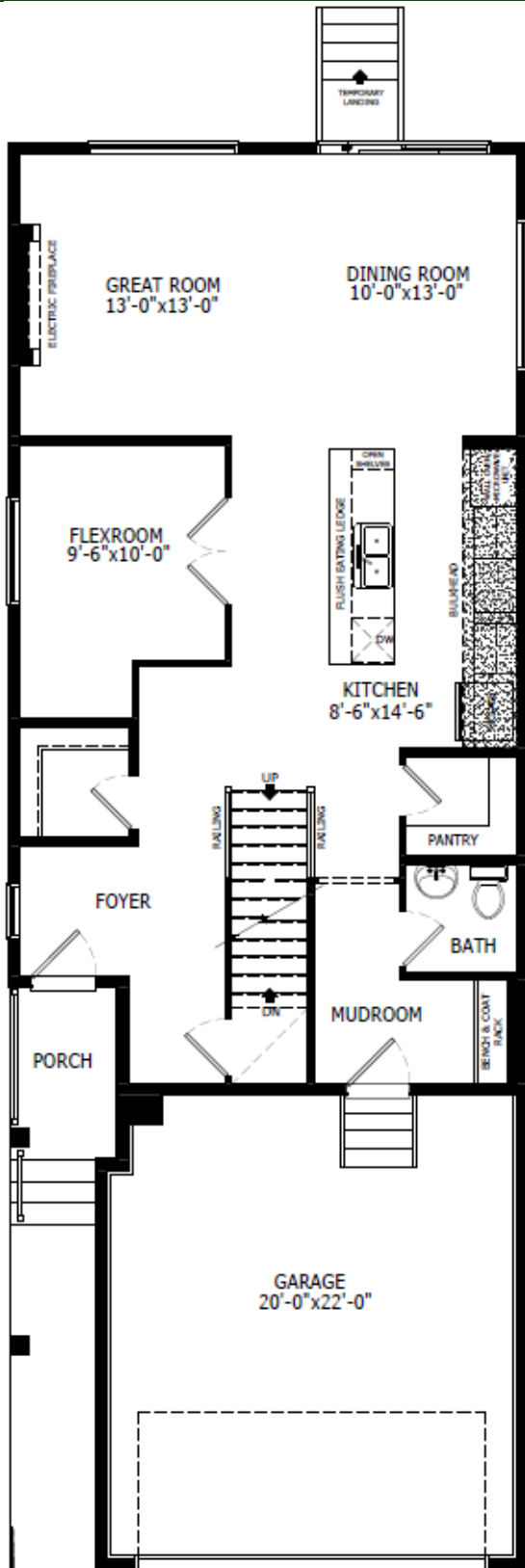
-  **Total Sq. Ft. - 2354**
-  **Bedrooms - 4**
-  **Bathrooms - 2.5**
-  **Garage - 2 Car**

- 9' ceiling on main floor
- Knockdown ceilings in developed areas
- Executive kitchen with stainless steel kitchen appliances, extra pots/pans drawers, water line to fridge, gas line to range, chimney hood fan and walk-in pantry
- Luxury Vinyl Plank (LVP) on main floor
- Quartz countertops with undermount sinks throughout
- Electric fireplace
- Paint grade railing with iron spindles
- Built-in bench and coat racks in mudroom
- 5-piece ensuite includes soaker tub, dual sinks with bank of drawers, and walk-in shower with three tiled walls to the ceiling; tiled floor with bench; shower niche; and sliding glass barn door
- West-facing backyard
- Gas line for BBQ
- February 2023 specifications

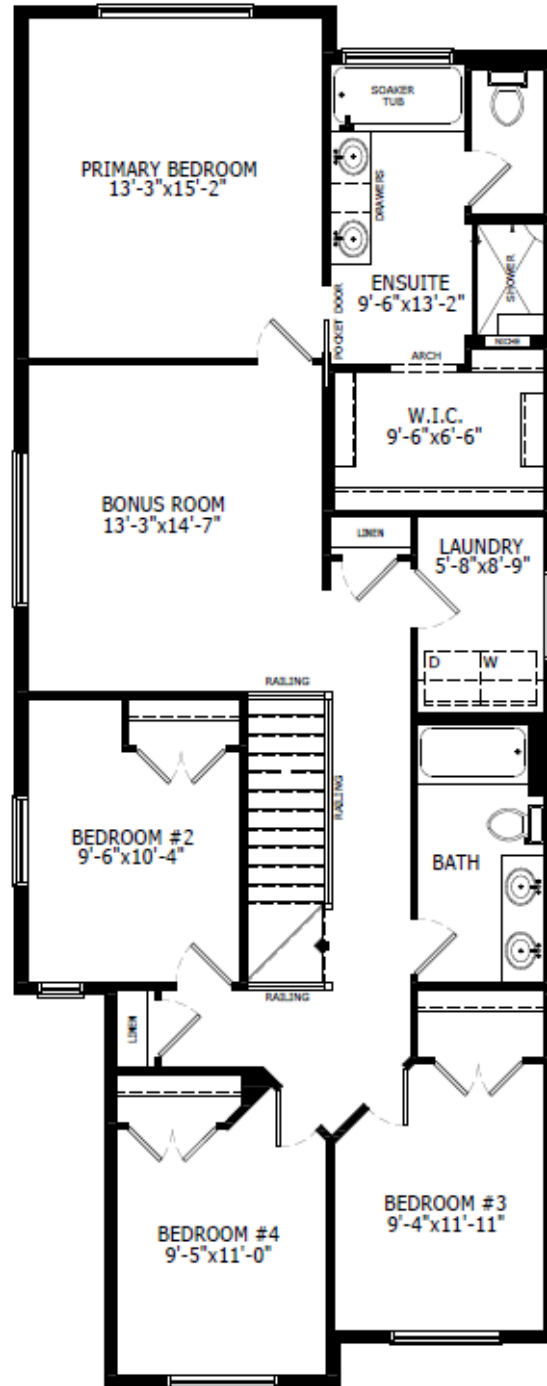


Contact: Diane Blackman & Jorja Burns

P: 403-981-0073 E: heartland@sterlingcalgary.com



Main Level: 1031 sq. ft.



Upper Level: 1323 sq. ft.