



## 170 Saddlebred Place

📍 - Heartland, Cochrane  
Job # 68048

 **Total Sq. Ft. - 2024**

 **Bedrooms - 3**

 **Bathrooms - 2.5**

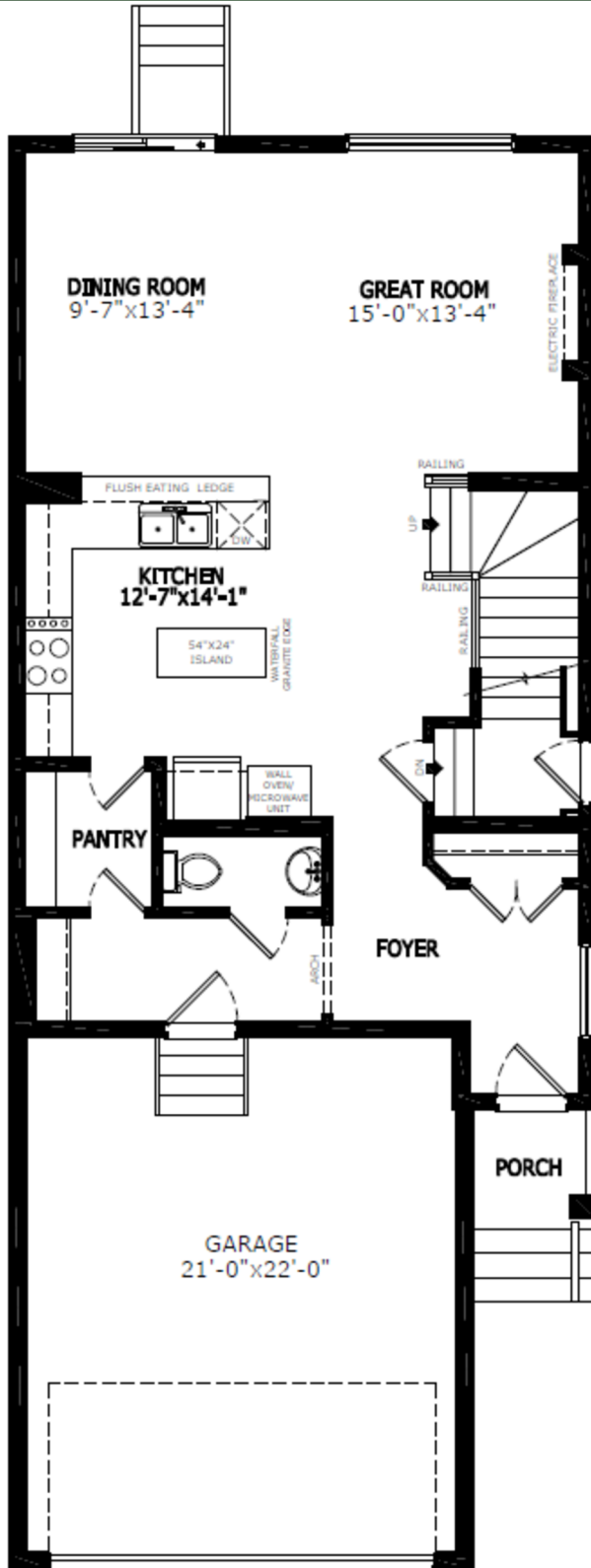
 **Garage - 2 Car**

- 9' ceiling on main floor
- Knockdown ceilings in developed areas
- Peninsula kitchen with stainless steel kitchen appliances, extra pots/pans drawers, water line to fridge, gas line to range, chimney hood fan and walk-through pantry
- Luxury Vinyl Plank (LVP) on main floor
- Quartz countertops with undermount sinks throughout
- Electric fireplace
- Paint grade railing with iron spindles
- Vaulted ceiling in bonus room
- Walk-in closets in all bedrooms
- 5-piece ensuite including soaker tub, dual sinks with bank of drawers, and walk-in shower with three tiled walls to the ceiling, fiberglass base, and sliding glass barn door
- West-facing backyard
- Gas line for BBQ
- February 2024 specifications

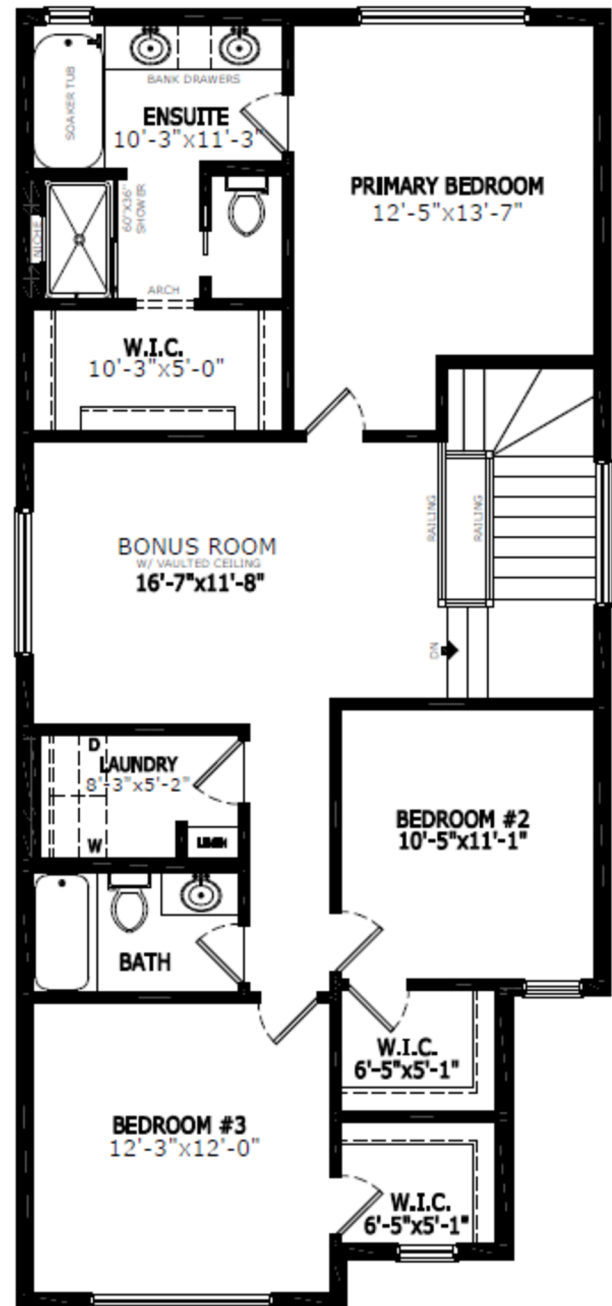


Contact: Diane Blackman & Brooklyn Solomon

P: 403-981-0073 E: heartland@sterlingcalgary.com



Main Level: 905 sq. ft.



Upper Level: 1119 sq. ft.