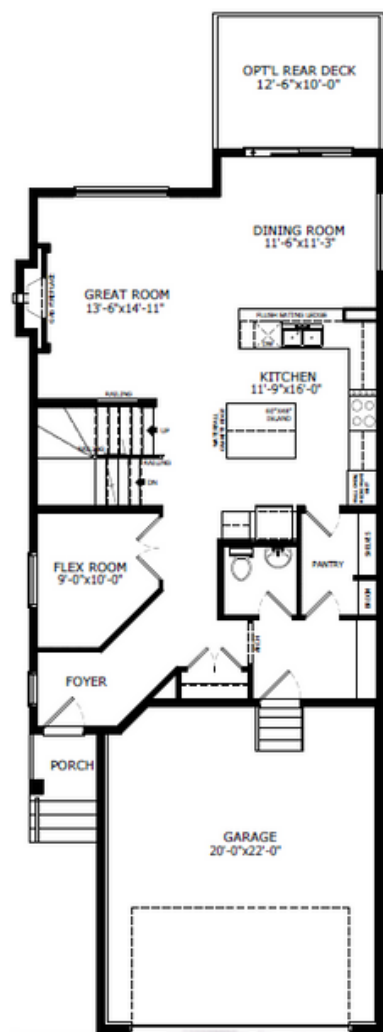
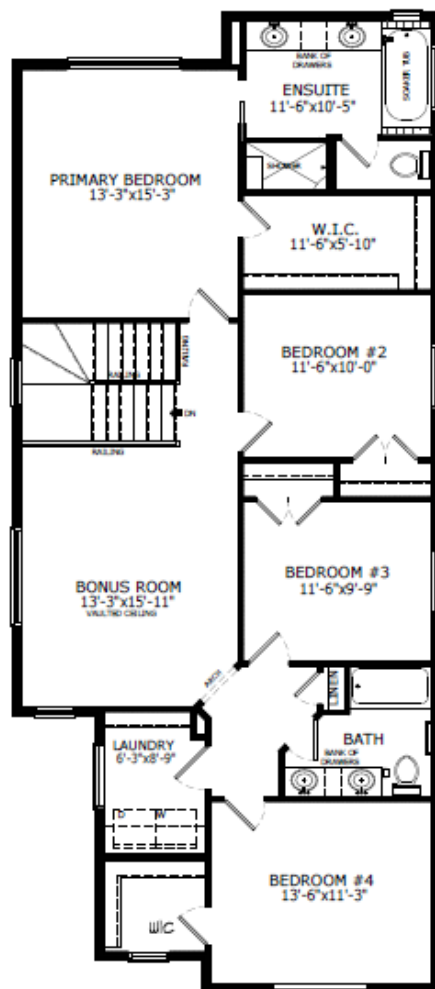


## Floorplan



Main Level: 1039 sq. ft.



Upper Level: 1357 sq. ft.



**Shilo Hannah**  
Area Manager



**Alexis Waterman**  
Area Associate



**Nicole O'Dell**  
Area Manager



**Emily Slobodzian**  
Area Associate



Elevation



Lot Location

### Contact:

P: (403) 982-0178

E: [wedderburn@sterlingcalgary.com](mailto:wedderburn@sterlingcalgary.com)

## Features

### Home Highlights

- 2025 Specifications
- West facing back yard
- Walkout lot
- BBQ gas line
- Painted basement floor
- Finished stairwell to basement
- Additional windows
- Paint grade railing with iron spindles at main floor and up stairwell
- Additional length and width to garage
- Open bench and coat racks with cubbies
- Double doors to flex room
- Vaulted ceiling in bonus room
- Luxury Vinyl Plank in main bath and laundry
- Gas fireplace with tile and paint grade mantel

### Kitchen Elements

- Executive kitchen with peninsula, stainless steel built-in appliances, chimney hood fan and gas cook top
- Waterfall granite edge on island
- Walk-through pantry

### Bathroom Elements

- Tile flooring in ensuite
- Pocket door to ensuite
- Bank of drawers in ensuite and main bath
- Fully tiled shower in ensuite
- Tile to ceiling in main bath shower



Without the Wait homes offer the benefit of moving in sooner, plus include these extra perks:

- **Curated Design:** Most popular floorplans and personalized interiors
- **Smart Energy:** Built-in energy efficiency and Smart Home features
- **Easy Move by Virtuio:** Concierge services, moving totes, and a customer portal app
- **Sterling Built Rewards:** Exclusive perks, offers, and partnerships for homeowners



Kitchen



Home Interiors

## Home Interiors