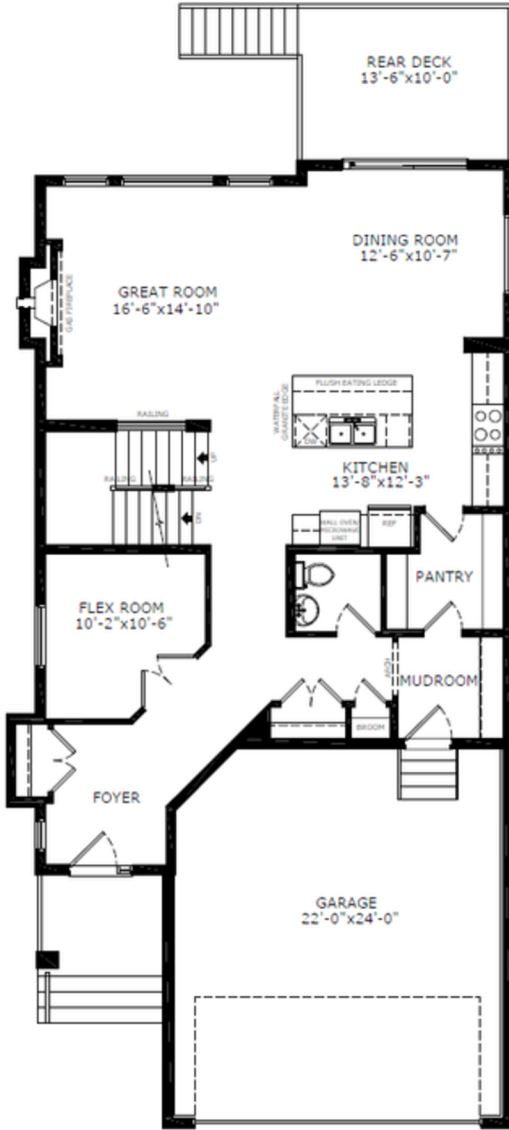
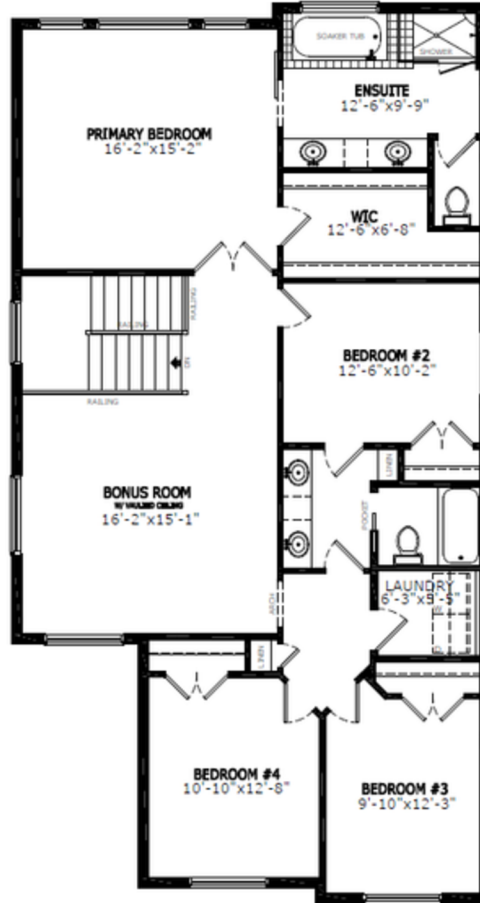


Floorplan



Main Level: 1181 sq. ft.



Upper Level: 1543 sq. ft.



Elevation



Lot Location



Nicole O'Dell
Area Manager



Alexis Waterman
Area Associate



Megan Flegal
Area Associate

Contact:

P: (403) 982-0178

E: darcy@sterlingcalgary.com

Features

Home Highlights

- 2025 Specifications
- 9' basement ceiling
- Oversized garage
- Rear deck with aluminum glass railing and BBQ gasline rough-in
- Main floor flex room with french doors
- One piece locker system in mudroom
- Gas fireplace with maple mantle and tile face
- Paint grade railing with iron spindles
- Vaulted ceiling in bonus room
- Wall detail in primary bedroom
- LVP throughout main floor and upper floor common areas
- Additional windows

Kitchen Elements

- Executive kitchen with built-in stainless steel appliances, chimney hoodfan and gas cooktop
- Island pendants
- Waste bin pullout
- Walk-through pantry with french door

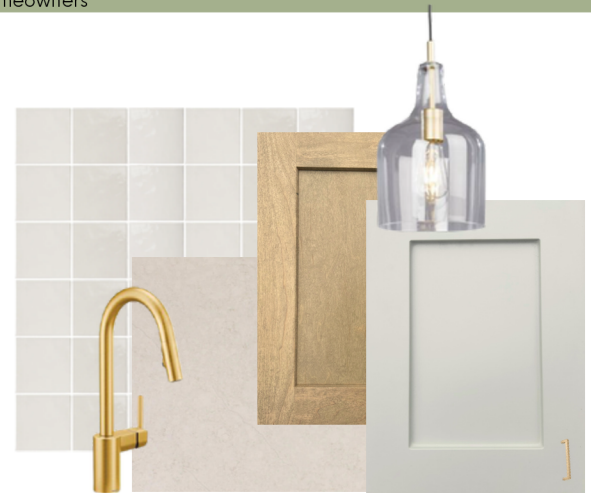
Bathroom Elements

- 5-piece ensuite with soaker tub
- Fully tiled shower with bench, glass shelves and swing door in ensuite
- Bank of drawers in ensuite and main bath
- Dual sinks in main bath
- Barn door to ensuite
- Tile flooring in upper baths and laundry
- Black plumbing fixtures



Without the Wait homes offer the benefit of moving in sooner, plus include these extra perks:

- **Curated Design:** Most popular floorplans and personalized interiors
- **Smart Energy:** Built-in energy efficiency and Smart Home features
- **Easy Move by Virtu:** Concierge services, moving totes, and a customer portal app
- **Sterling Built Rewards:** Exclusive perks, offers, and partnerships for homeowners



Kitchen



Home Interiors