

PIERCE 2

Address
51 Sweetgrass Circle

Job#
87160

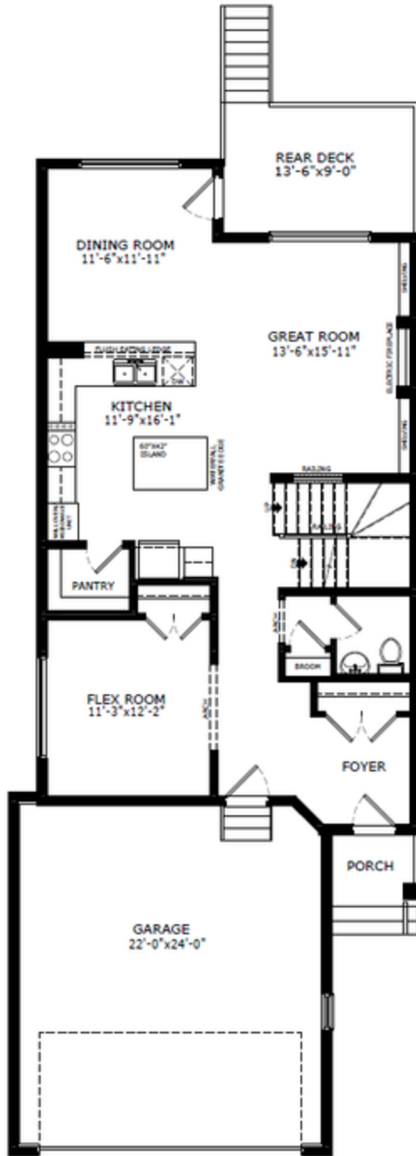
Total Sq. Ft. - 2547

Bedrooms - 4

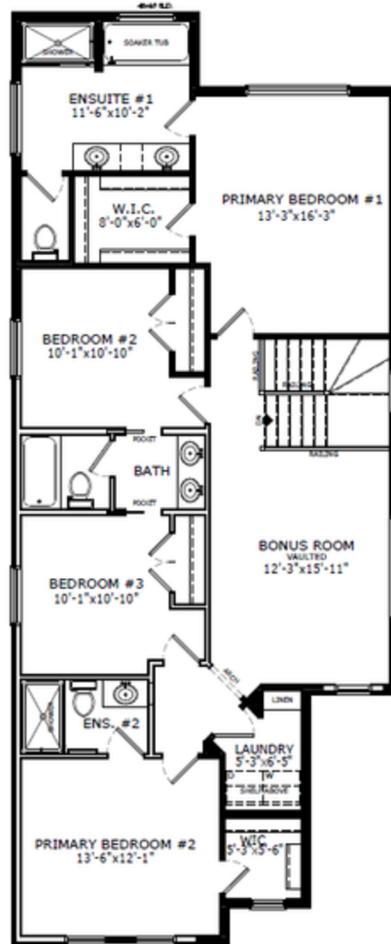
Bathrooms - 3.5

Garage - 2 Car

Floorplan



Main Level: 1092 sq. ft.



Upper Level: 1455 sq. ft.



Elevation



Lot Location



Shilo Hannah
Area Manager



Alexis Waterman
Area Associate



Nicole O'Dell
Area Manager



Emily Slobodzian
Area Associate

Contact:

P: (403) 982-0178

E: darcy@sterlingcalgary.com

Features



Without the Wait homes offer the benefit of moving in sooner, plus include these extra perks:

- **Curated Design:** Most popular floorplans and personalized interiors
- **Smart Energy:** Built-in energy efficiency and Smart Home features
- **Easy Move by Virtu:** Concierge services, moving totes, and a customer portal app
- **Sterling Built Rewards:** Exclusive perks, offers, and partnerships for homeowners

Home Highlights

- 2025 Specifications
- Oversized garage
- Rear deck with glass railing and BBQ gasline rough-in
- Second primary bedroom with ensuite upstairs
- Round archway details
- Main floor flex room
- Electric fireplace with maple floating shelves
- Maple railing with iron spindles
- Vaulted ceiling in bonus room
- Wall detail in primary bedroom and dining room
- LVP throughout main floor
- Additional windows

Kitchen Elements

- Executive Kitchen with stainless steel built-in appliances, chimney hoodfan and gas cooktop
- Waste bin pullout
- Walk-in pantry



Kitchen

Bathroom Elements

- 5-piece ensuite with soaker tub and bank of drawers
- 3-piece ensuite in second primary bedroom
- Fiberglass base shower with tiled walls in ensuites
- Tile flooring in upper floor bathrooms and laundry
- Jack and Jill main bath with dual sinks



Home Interiors