

DENALI 6

Address
58 Birch Row

Job#
87174

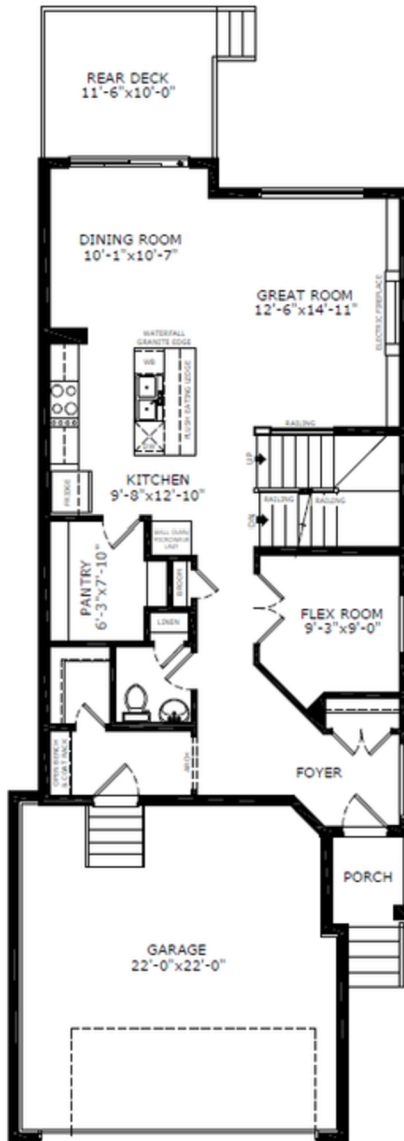
Total Sq. Ft. - 2330

Bedrooms - 4

Bathrooms - 2.5

Garage - 2 Car

Floorplan



Main Level: 997 sq. ft.



Upper Level: 1333 sq. ft.



Elevation



Lot Location



Shilo Hannah
Area Manager



Alexis Waterman
Area Associate



Nicole O'Dell
Area Manager



Emily Slobodzian
Area Associate

Contact:

P: (403) 982-0178

E: darcy@sterlingcalgary.com

Features



Without the Wait homes offer the benefit of moving in sooner, plus include these extra perks:

- **Curated Design:** Most popular floorplans and personalized interiors
- **Smart Energy:** Built-in energy efficiency and Smart Home features
- **Easy Move by Virtu:** Concierge services, moving totes, and a customer portal app
- **Sterling Built Rewards:** Exclusive perks, offers, and partnerships for homeowners

Home Highlights

- 2025 Specifications
- 9' basement ceilings
- Oversized garage
- Developed basement stairwell
- Rear deck with glass railing and BBQ gasline rough-in
- Open bench and coat rack with cubbies in mudroom
- Main floor flex room with french doors
- Electric fireplace with paint grade floating shelves
- Paint grade railing with iron spindles
- Vaulted ceiling in bonus room
- Additional windows

Kitchen Elements

- Executive kitchen with stainless steel built-in appliances, chimney hoodfan, gas cooktop
- Waste bin pullout
- Pendant lighting
- Walk-in pantry



Kitchen

Bathroom Elements

- 5-piece ensuite with soaker tub
- Fully tiled shower with bench, tiled ledge and glass barn door in ensuite
- Tile flooring in upper floor bathrooms and laundry
- Bank of drawers in ensuite and main bath
- Black hardware



Home Interiors