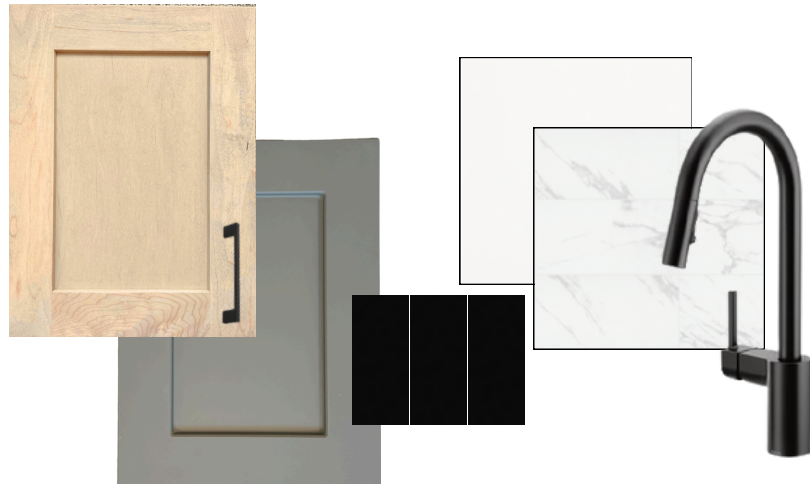




*Concept only, for specific elevation see reverse side.



Homes built by Sterling Homes are 20% more energy-efficient than the average home. This means you'll enjoy lower utility bills and a more comfortable living environment, all while being kind to the planet!



Kitchen

Kitchen

- Kitchen with rear layout and stainless steel appliances
- Gas range
- Dishwasher in island
- Silgranit sink
- Pantry with double doors
- Tile backsplash

Bathrooms

- LVP in ensuite, main bath, and laundry room
- Upgraded tiled ensuite shower
- 4-piece ensuite with dual sinks

Convenience

- 2024 specifications
- 9' basement ceiling
- Main floor den
- Main floor full bath with walk-in shower
- W.I.C in primary bedroom

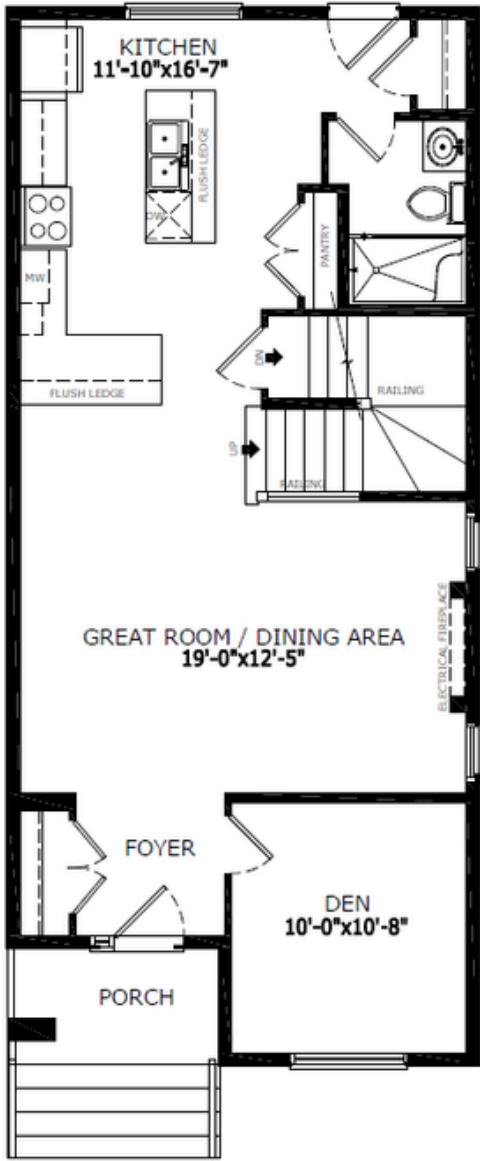
Rest of Home

- Upper floor loft
- Paint grade railing with iron spindles
- Side entrance
- Electric fireplace with tile face



Home Interiors

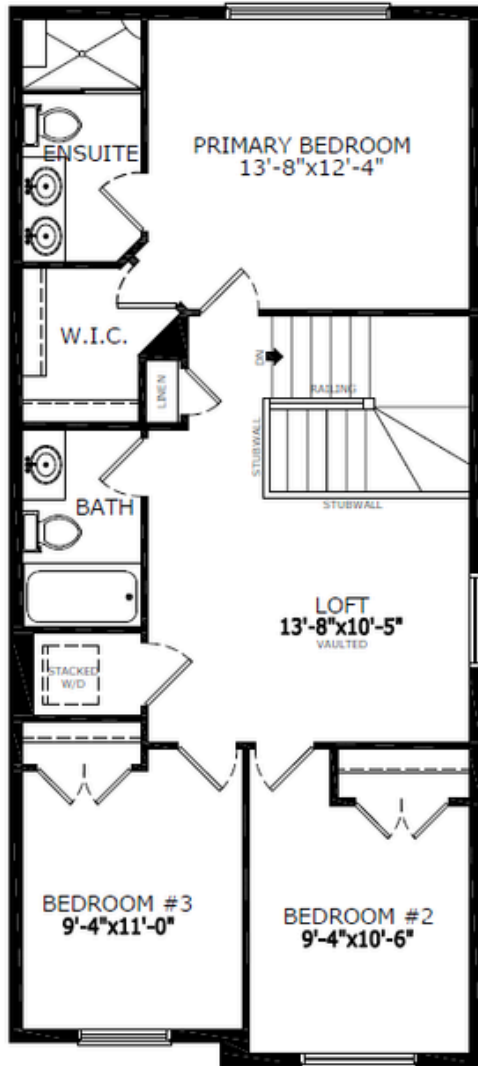
Floorplan



Main Level: 855 sq. ft.



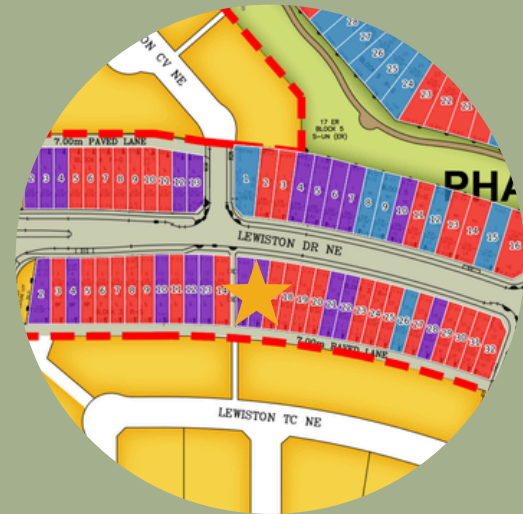
Raman Dhillon
Area Manager



Upper Level: 828 sq. ft.



Jason Tang
Area Associate



Contact:

P: (403)453-3632

E: lewiston@sterlingcalgary.com