

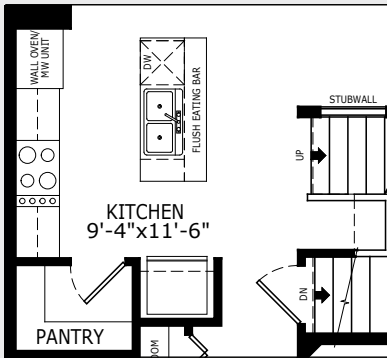


Abbott 2

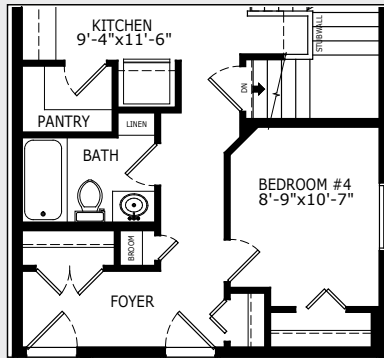
2193 SQ FT | MAIN 825 SQ FT | UPPER 979 SQ FT | THIRD 389 SQ FT

STANDARD MAIN FLOOR

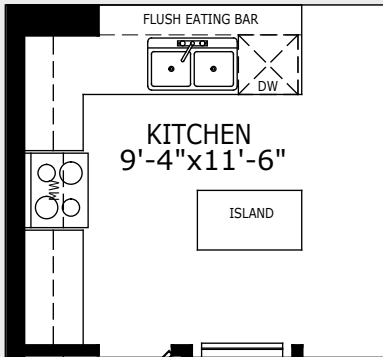
OPTIONAL EXECUTIVE KITCHEN



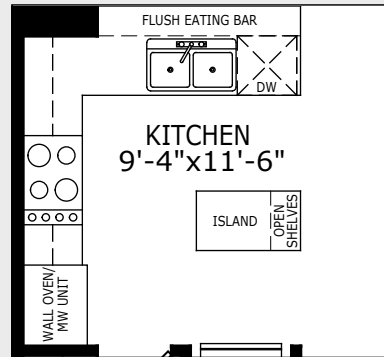
OPTIONAL MAIN FLOOR BEDROOM & FULL BATH



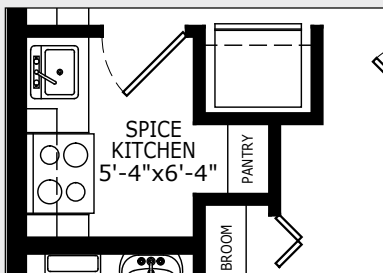
OPTIONAL PENINSULA KITCHEN



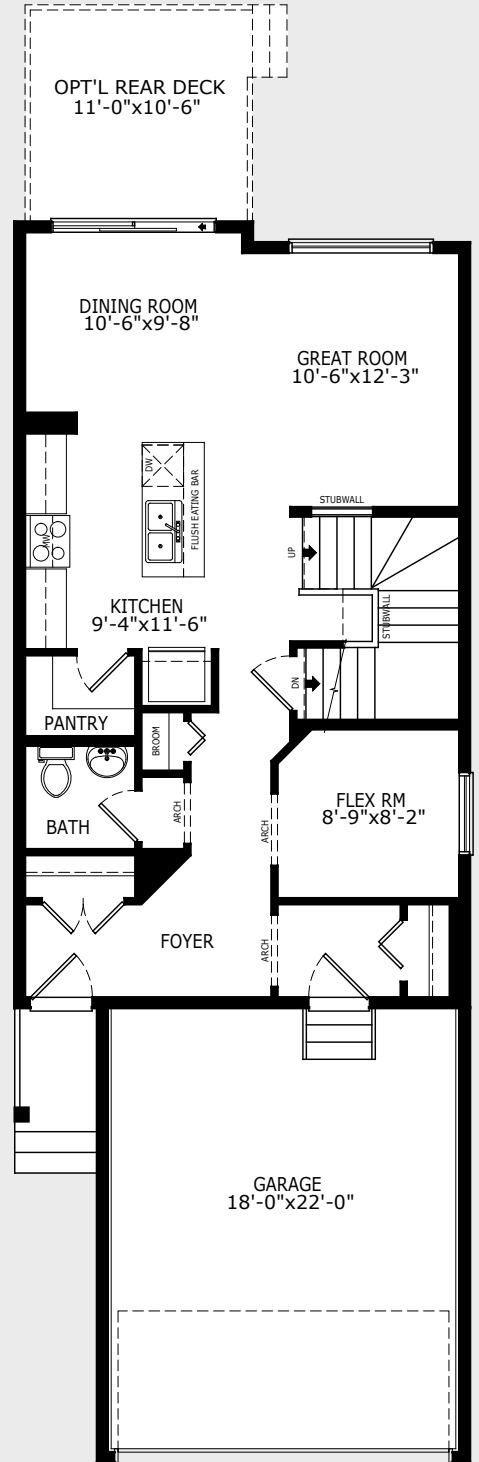
OPTIONAL PENINSULA WITH EXECUTIVE KITCHEN



OPTIONAL SPICE KITCHEN



MORE FLOORPLAN DETAILS



Build Your Life

STERLINGCALGARY.COM

Abbott 2

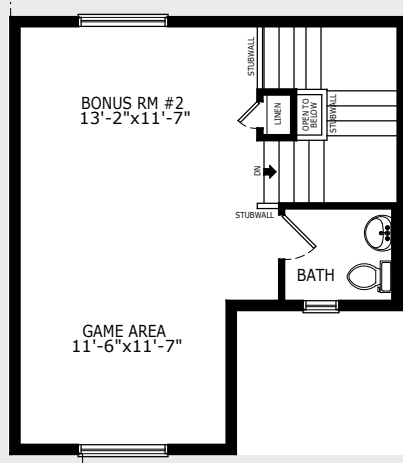
2193 SQ FT | MAIN 825 SQ FT | UPPER 979 SQ FT | THIRD 389 SQ FT

Sterling
HOMES
A QUALICO Company

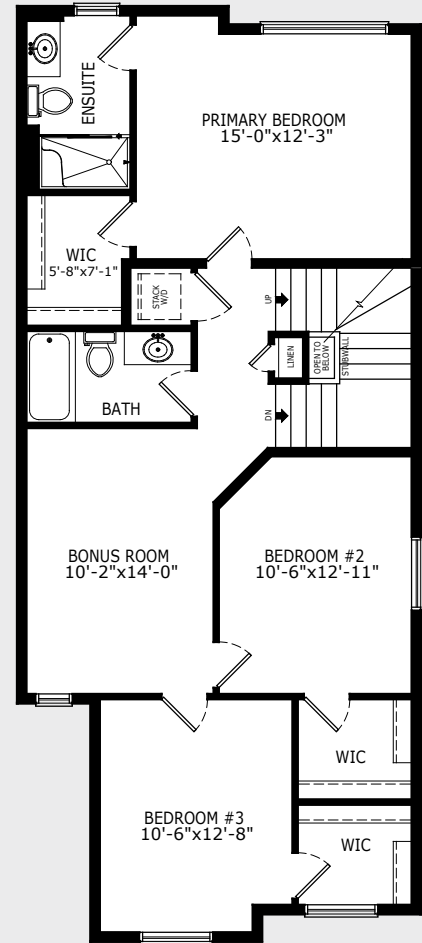
Building homes for over

-70-
years

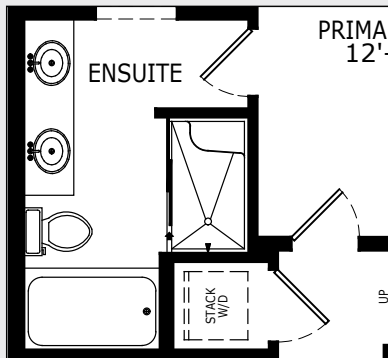
STANDARD THIRD FLOOR



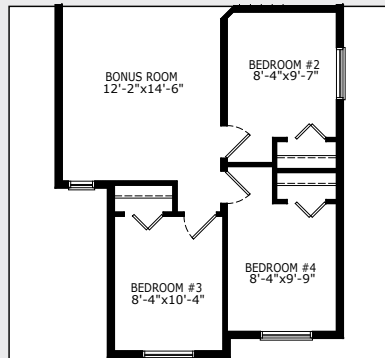
STANDARD UPPER FLOOR



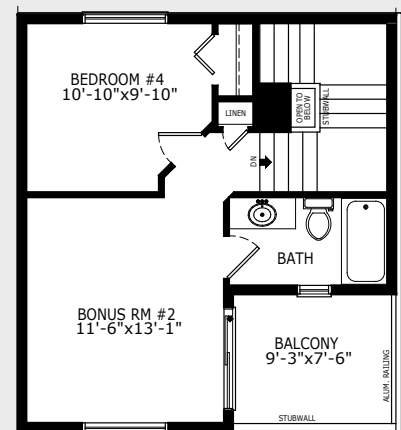
OPTIONAL ENSUITE



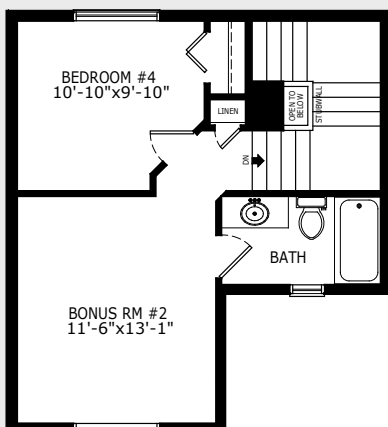
OPTIONAL 4 BEDROOMS



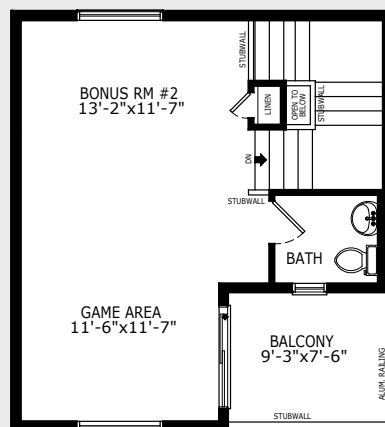
OPTIONAL THIRD FLOOR WITH BALCONY, BEDROOM & FULL BATH



OPTIONAL THIRD FLOOR WITH BEDROOM & FULL BATH



OPTIONAL THIRD FLOOR WITH BALCONY



Build Your Life

STERLINGCALGARY.COM

Building homes for over

-70-
years

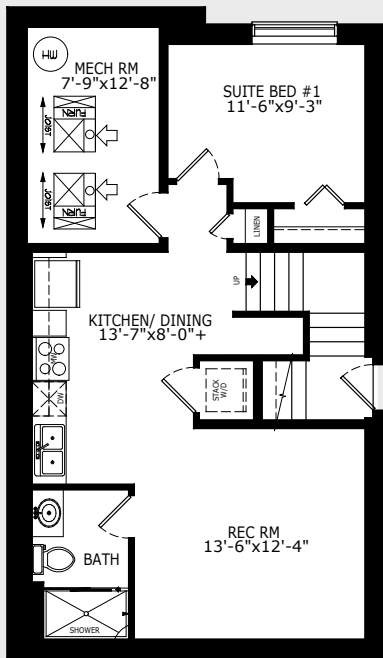
Sterling
HOMES

A QUALICO Company

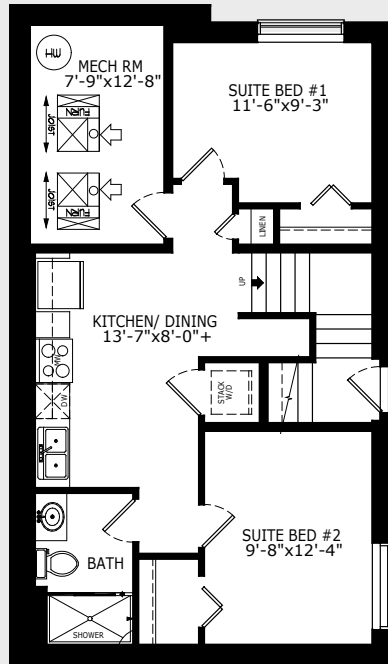
Abbott 2

2193 SQ FT | MAIN 825 SQ FT | UPPER 979 SQ FT | THIRD 389 SQ FT

BASEMENT DEVELOPMENT OPTIONS



**Legal Basement Suite -
1 Bedroom 581 Sq Ft.**

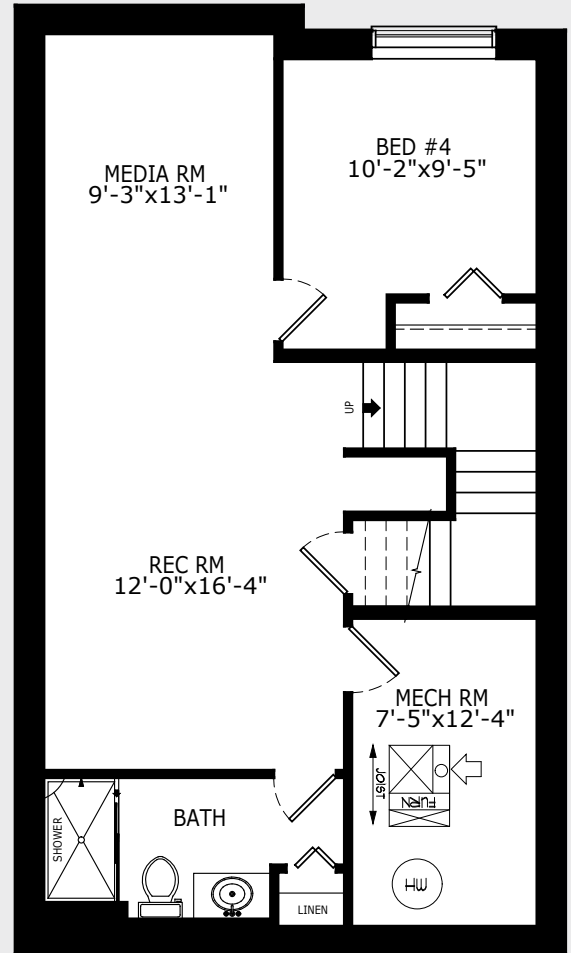


**Legal Basement Suite -
2 Bedroom 581 Sq Ft.**

CHECK OUT SUITE BENEFITS

LOOKING TO PLAN FOR THE FUTURE?

Add a basement suite rough-in to your undeveloped basement.



Basement Development: 579 Sq Ft.

*Please note some lots and communities will not allow all basement development options, please see a sales representative for further details.

ELEVATIONS*



CRAFTSMAN ELEVATION



FARMHOUSE ELEVATION



MODERN ELEVATION



PRAIRIE ELEVATION

* Elevations may differ for optional layouts

Build Your Life

STERLINGCALGARY.COM