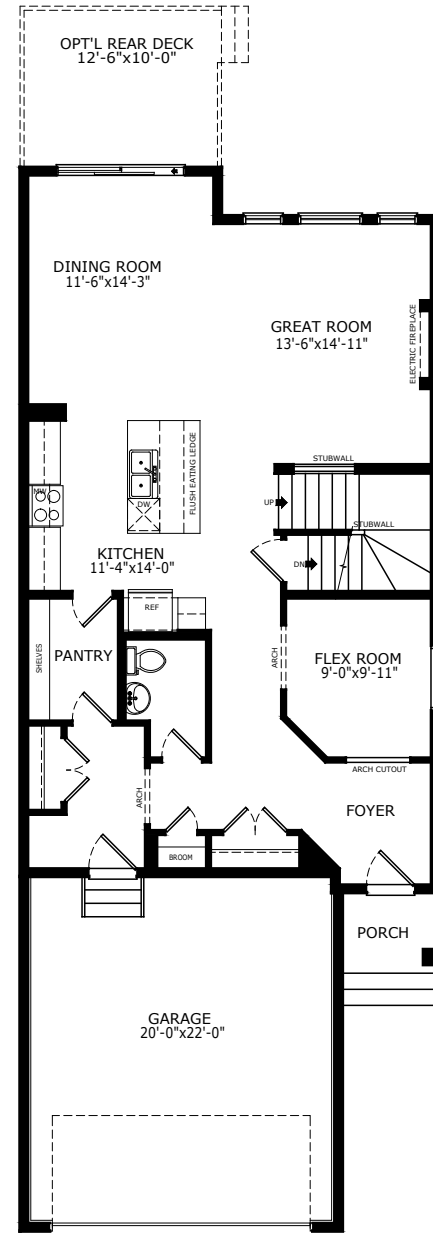
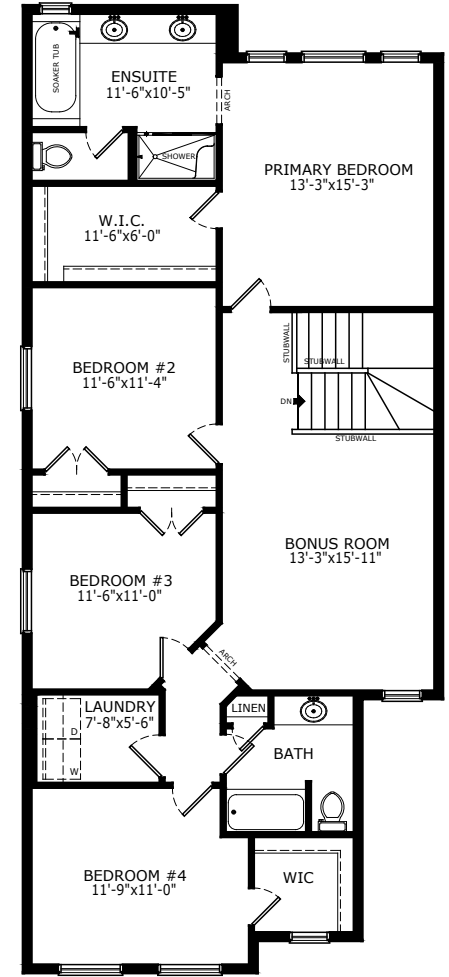


2472 SQ FT  
4 BEDS  
2.5 BATHS

# LEGACY



MAIN: 1110 SQ FT



UPPER FLOOR: 1362 SQ FT

# Sterling HOMES

A QUALICO Company

## ELEVATIONS



CRAFTSMAN



MODERN FARMHOUSE



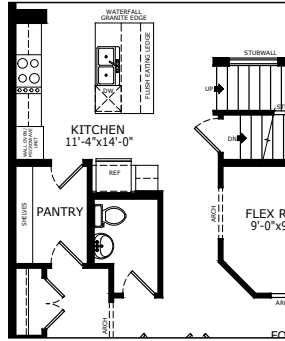
PRAIRIE



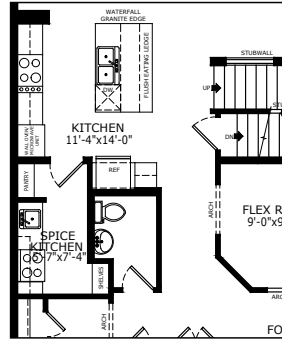
Scan here for floorplan options and more

## MAIN FLOOR OPTIONS

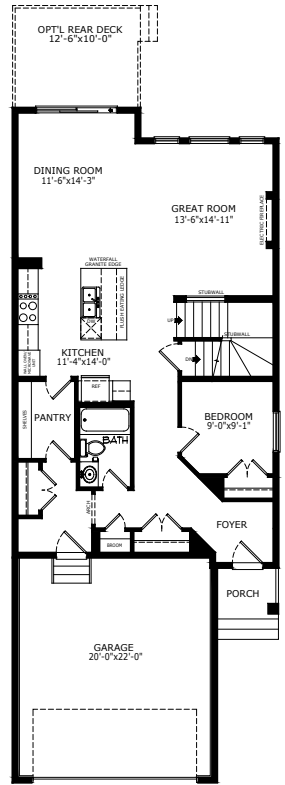
OPTIONAL EXECUTIVE KITCHEN



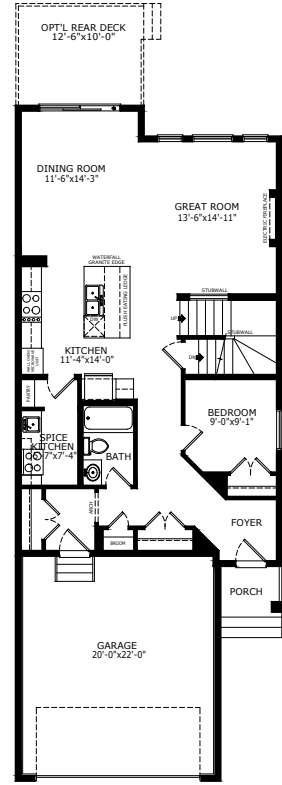
OPTIONAL SPICE KITCHEN



OPTIONAL FULL BATH WITH BEDROOM

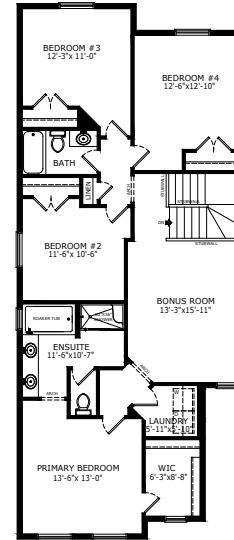


OPTIONAL SPICE KITCHEN AND OPTIONAL FULL BATH WITH BEDROOM

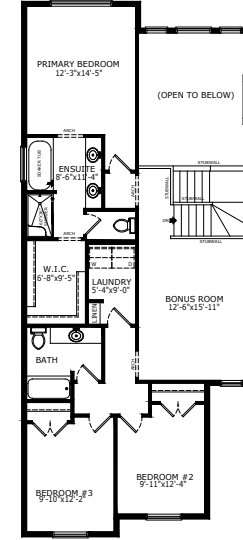


## UPPER FLOOR OPTIONS

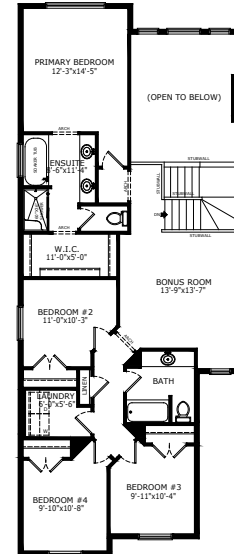
OPTIONAL FRONT PRIMARY BEDROOM



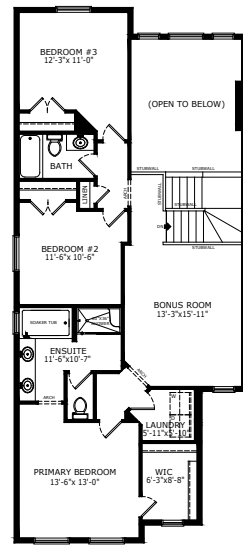
OPTIONAL 3RD BEDROOM (OPEN TO BELOW)



OPTIONAL 4TH BEDROOM (OPEN TO BELOW)

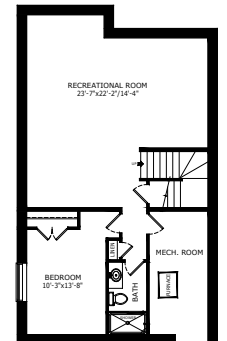


OPTIONAL PRIMARY & 3RD BEDROOM (OPEN TO BELOW)

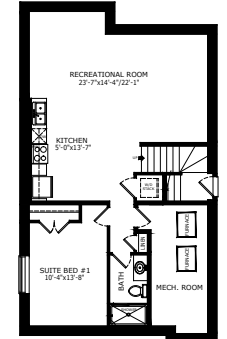


## BASEMENT OPTIONS

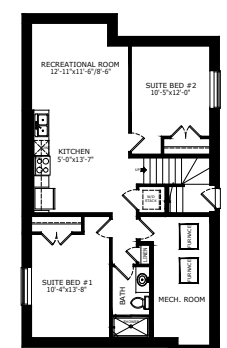
STANDARD 812 SQ FT



1 BEDROOM 'LEGAL SUITE' 818 SQ FT



2 BEDROOM 'LEGAL SUITE' 818 SQ FT



\*Legal Suite availability varies by community and municipal regulations.

# Build Your Life

STERLINGCALGARY.COM