



234 Chelsea Heath

📍 - Chelsea, Chestermere
Job # 119032



Total Sq. Ft. - 1683



Bedrooms - 3



Bathrooms - 2.5

- 9' knockdown ceilings
- Stainless steel kitchen appliances including chimney hood fan and built-in microwave
- Quartz counter tops with undermount sinks throughout
- Wrought iron railing
- Vinyl plank flooring throughout main floor, laundry and bathroom
- 4-piece ensuite, including dual sinks and tiled shower
- Side entrance
- Back alley access with 20'x20' concrete pad

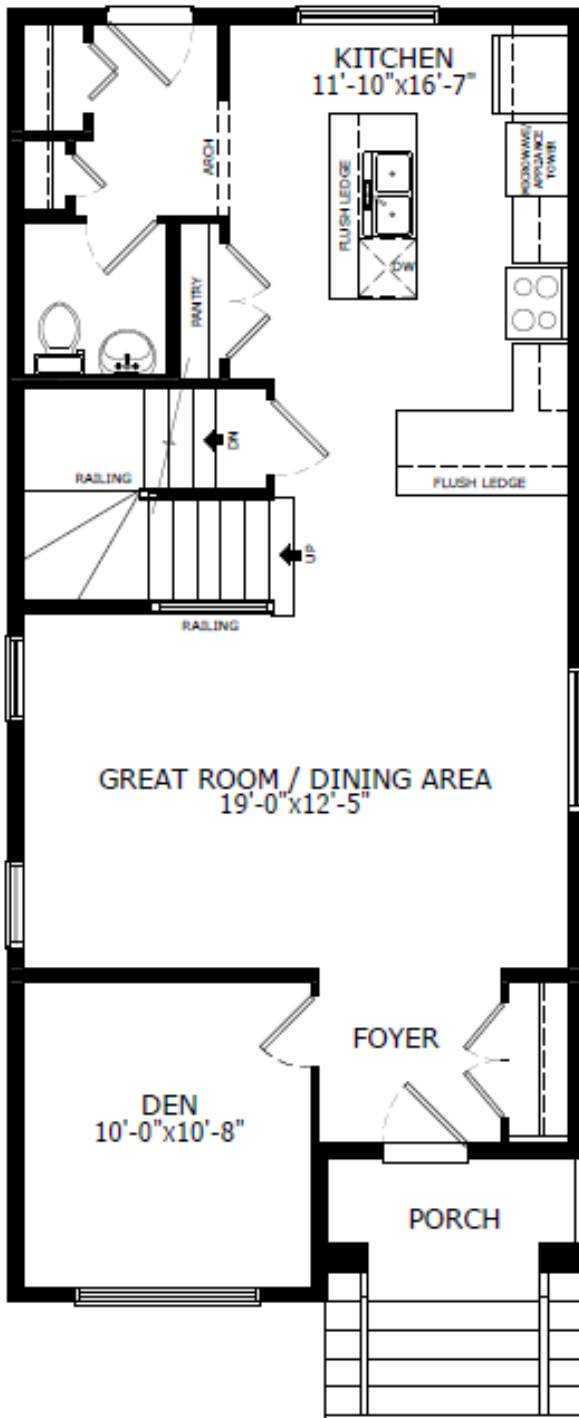


Contact: Doug Anderson & Abby Wells
P: 587-352-9890 E: chelsea@sterlingcalgary.com

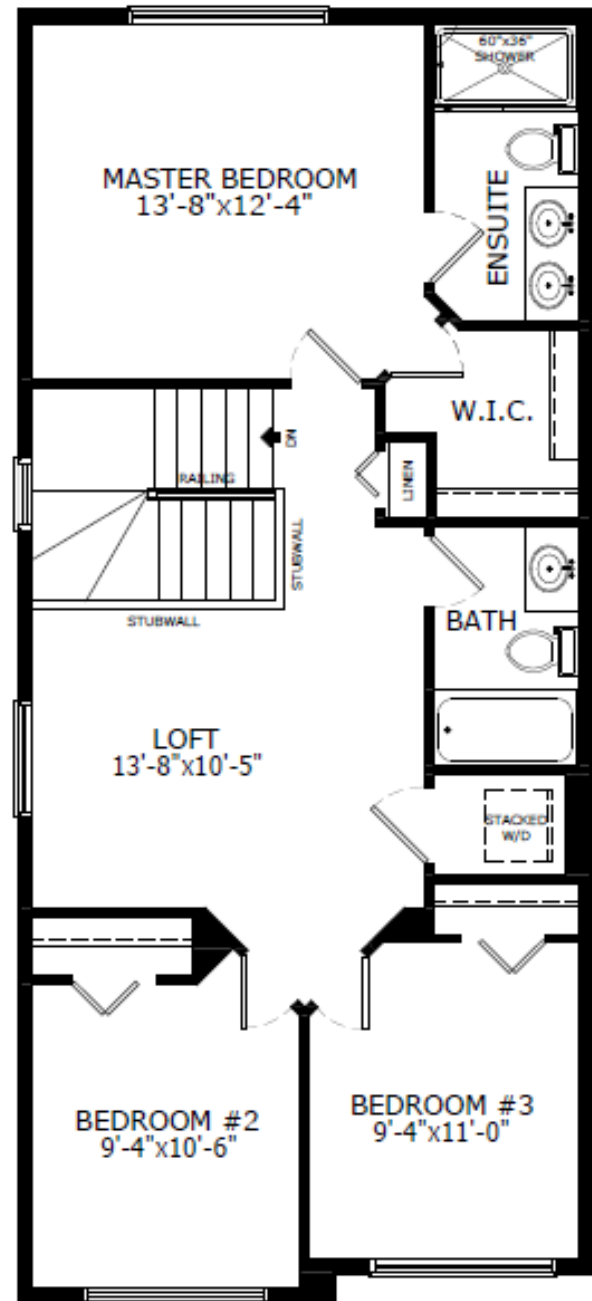
COPELAND

Sterling
HOMES

A QUALICO Company



Main Level: 855 sq. ft.



Second Level: 828 sq. ft.