



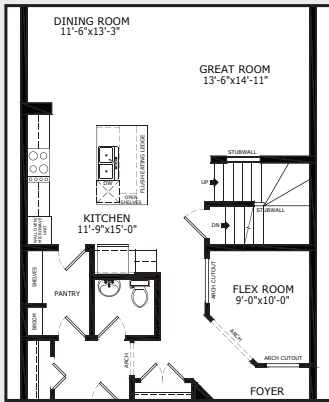
Sterling
HOMES
A QUALICO Company

Pierce

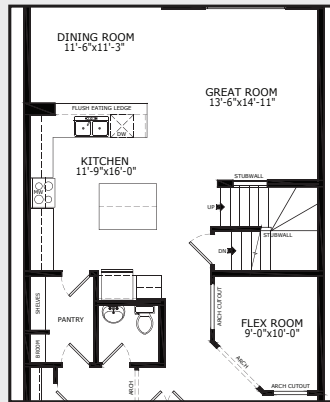
2396 SQ FT | MAIN 1039 SQ FT | UPPER 1357 SQ FT

STANDARD MAIN FLOOR

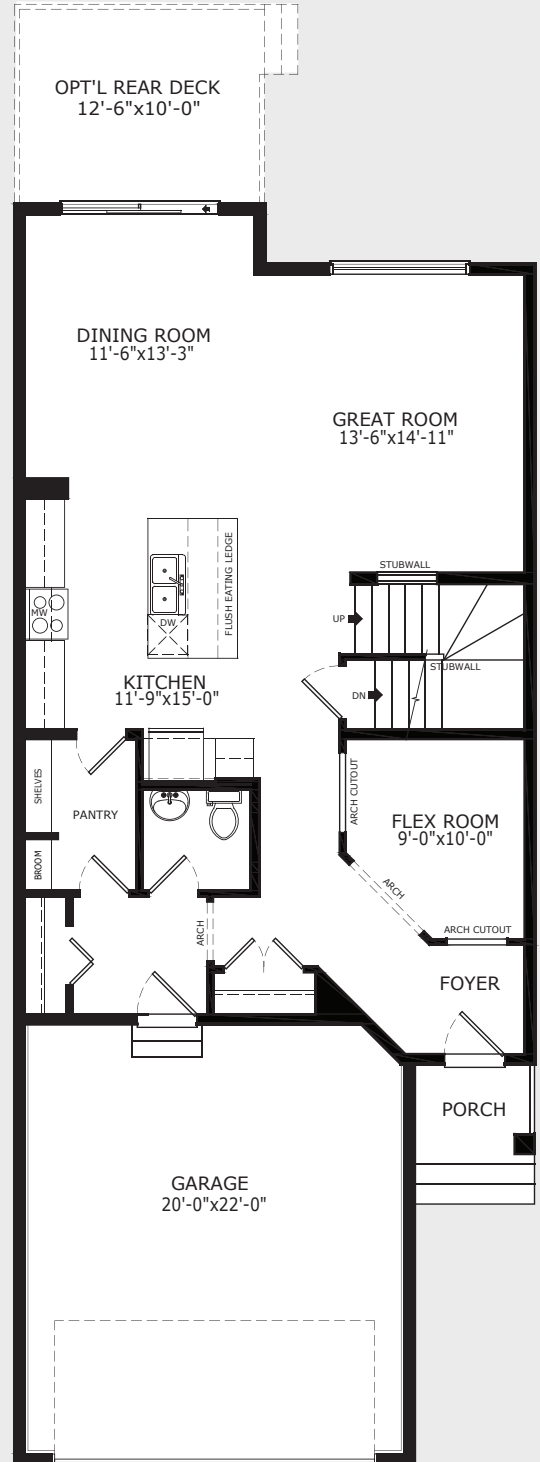
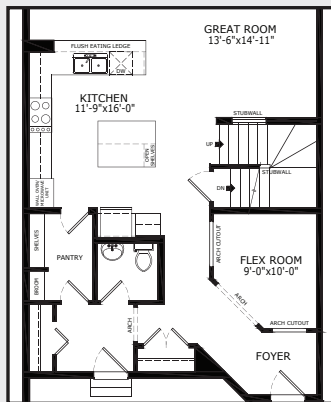
OPTIONAL EXECUTIVE WITH KITCHEN



OPTIONAL PENINSULA KITCHEN



OPTIONAL EXECUTIVE KITCHEN WITH PENINSULA



Build Your Life

STERLINGCALGARY.COM

Pierce

2396 SQ FT | MAIN 1039 SQ FT | UPPER 1357 SQ FT

Sterling
HOMES

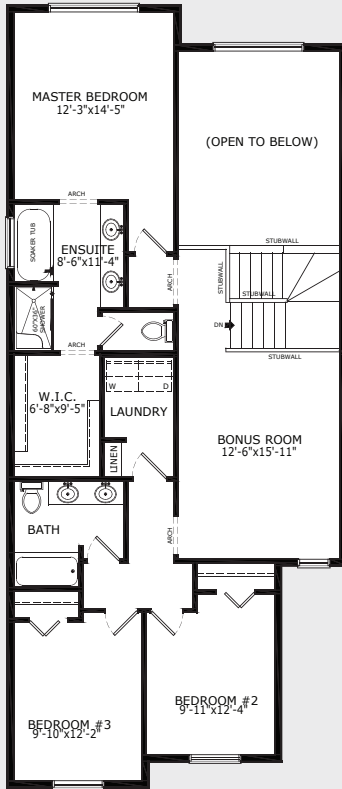
A QUALICO Company

Building homes for over

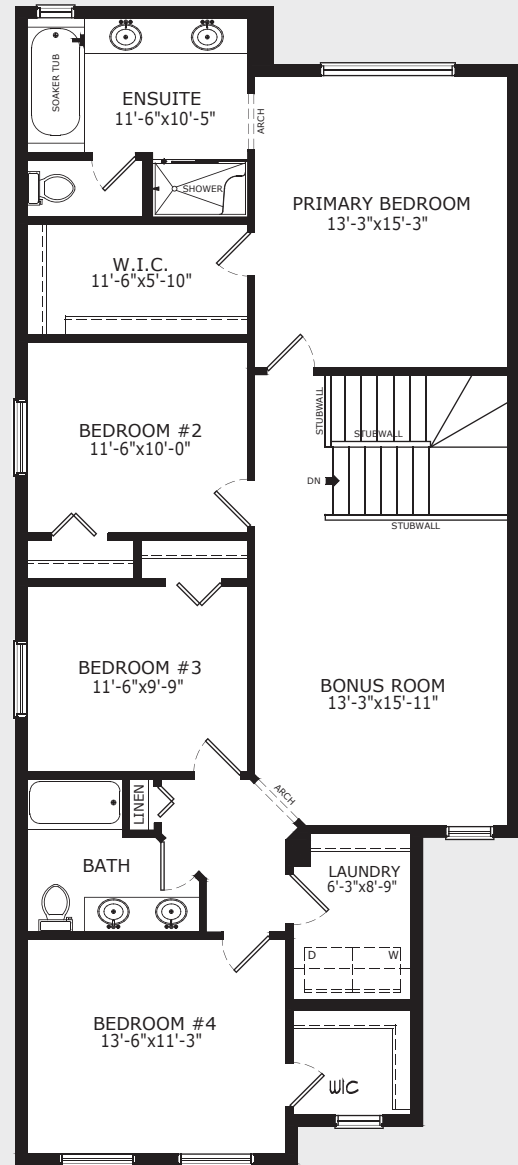
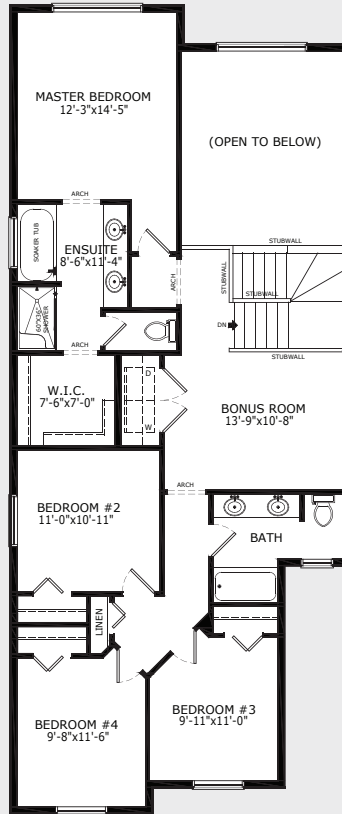
-70-
years

STANDARD UPPER FLOOR

OPTIONAL OPEN TO BELOW
WITH 3 BEDROOM



OPTIONAL OPEN TO BELOW
WITH 4 BEDROOM



ELEVATIONS*

* Elevations may differ for optional layouts



PRAIRIE ELEVATION



COLONIAL ELEVATION



CRAFTSMAN ELEVATION



TUDOR ELEVATION



MODERN FARMHOUSE

Build Your Life

STERLINGCALGARY.COM