



\*Concept only, for specific elevation see reverse side.



Homes built by Sterling Homes are 20% more energy-efficient than the average home. This means you'll enjoy lower utility bills and a more comfortable living environment, all while being kind to the planet!



Kitchen

### Kitchen

- Executive kitchen with built-in stainless-steel appliances
- Gas cooktop
- Waterfall island edge
- Silgranit sink
- Walk-through pantry
- Tile backsplash

### Bathrooms

- LVP in ensuite, main bath, and laundry room
- Upgraded tiled ensuite shower
- 5-piece ensuite with dual square sinks and walk-in shower

### Convenience

- 2024 specifications
- 9' basement ceiling
- Main floor bedroom
- Main floor full bath with upgraded 3-wall tiled shower
- W.I.C in primary bedroom
- Side entrance
- Basement suite RI
- BBQ gas line

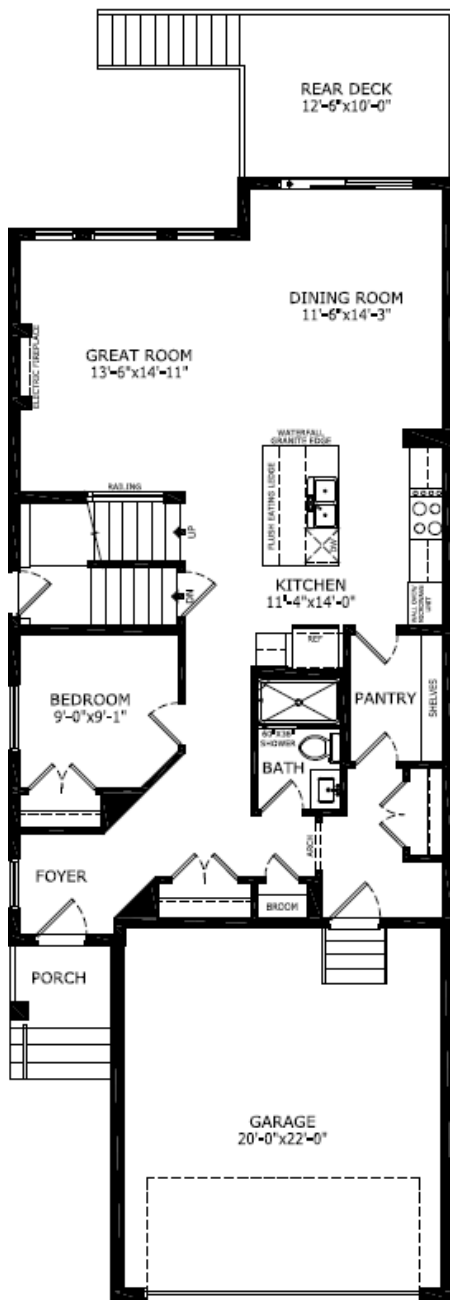
### Rest of Home

- Upper floor bonus room
- Paint grade railing with iron spindles
- Electric fireplace with floor-to-ceiling wall detail
- Open-to-above great room
- Windows throughout

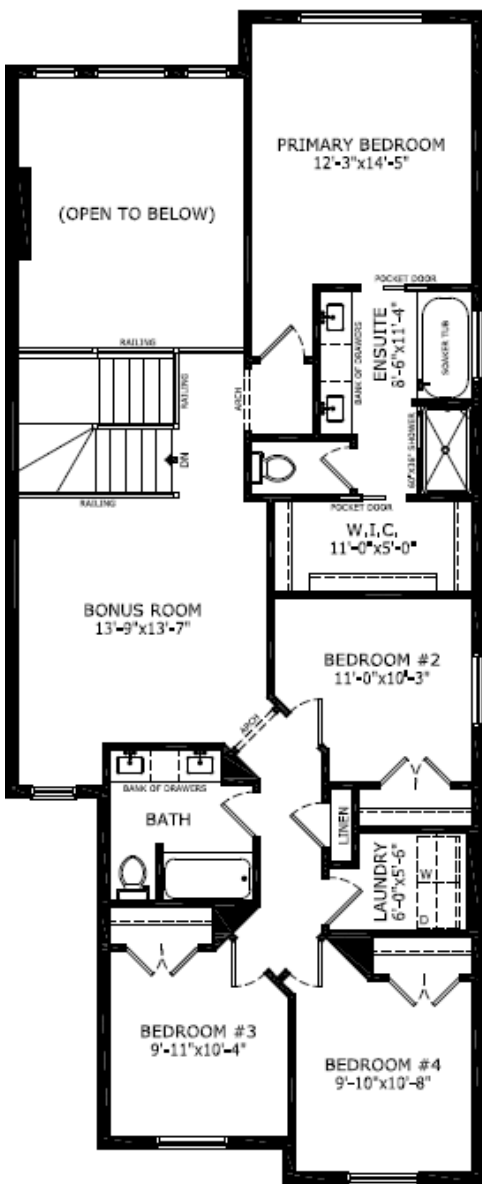


Home Interiors

# Floorplan



Main Level: 1110 sq. ft.



Upper Level: 1253 sq. ft.



Elevation



Lot Location



Amanda Loh  
Area Manager



Travis Smith  
Area Associate

## Contact:

P: (403)452-3164

E: hotchkiss@sterlingcalgary.com