



\*Concept only, for specific elevation see reverse side.



Homes built by Sterling Homes are 20% more energy-efficient than the average home. This means you'll enjoy lower utility bills and a more comfortable living environment, all while being kind to the planet!



Kitchen

## Kitchen

- Executive Kitchen including built-in stainless steel appliances, chimney hoodfan and gas cook top
- Waterfall Island
- Pendants lights above Island
- Matte black Kitchen faucet
- 2-tone cabinets

## Bathrooms

- 5-piece Ensuite including shower with tiled walls and tiled niche
- Bank of drawers in Ensuite and Main Bath vanity

## Rest of Home

- Open to above in Great Room
- Barn door to Flex Room
- Bench and coat racks, and walk-in closet in Mudroom
- Paint grade railing with iron spindles in stairwell
- Gas fireplace with tile
- Walk-in closets in all bedrooms

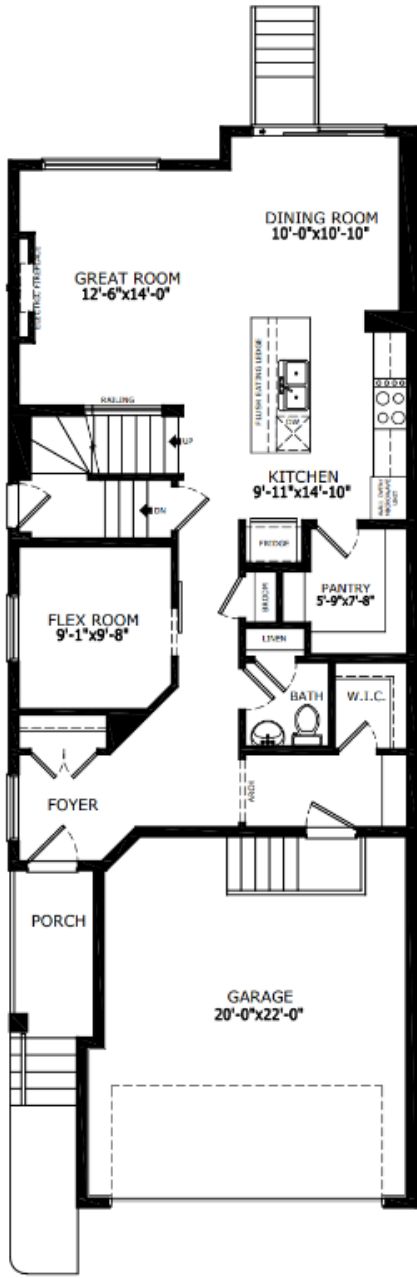
## Convenience

- 2024 specifications
- Side entrance door
- 9' basement
- 2 basement windows
- BBQ Gasline

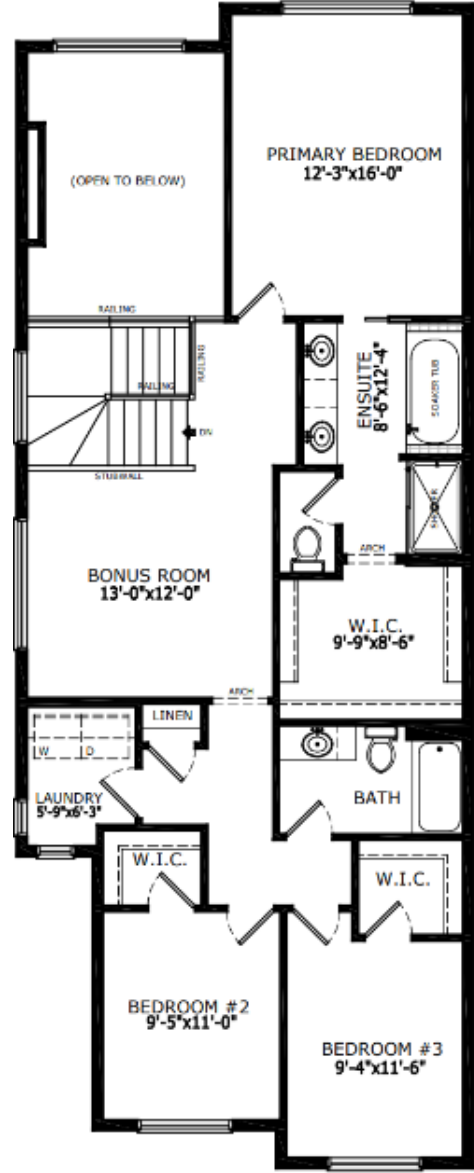


Home Interiors

# Floorplan



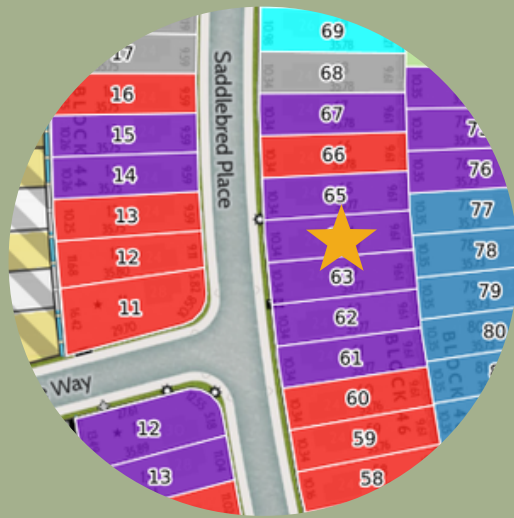
Main Level: 997 sq. ft.



Upper Level: 1156 sq. ft.



Elevation



Lot Location



Diane Blackman  
Area Manager



Jorja Burns  
Area Associate

## Contact:

P: (403)981-0073

E: [rivercreststerlingcalgary.com](mailto:rivercreststerlingcalgary.com)