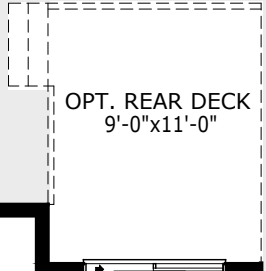




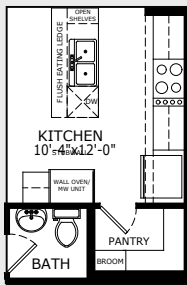
# Valmore 3

1702 SQ FT | MAIN 757 SQ FT | UPPER 945 SQ FT

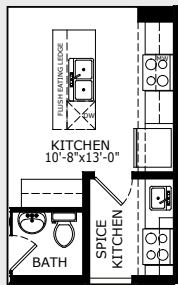
## STANDARD MAIN FLOOR



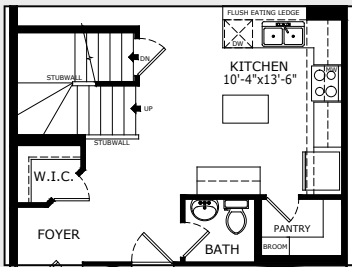
### OPTIONAL EXECUTIVE KITCHEN



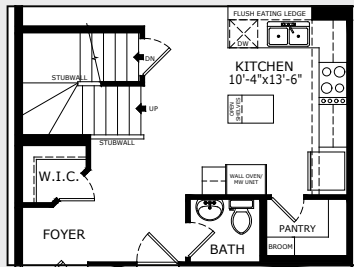
### OPTIONAL SPICE KITCHEN



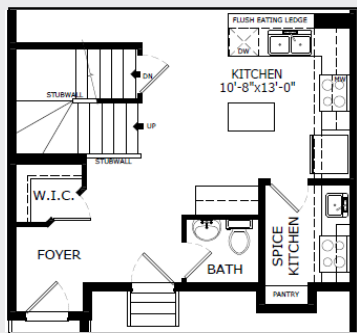
### OPTIONAL PENINSULA KITCHEN



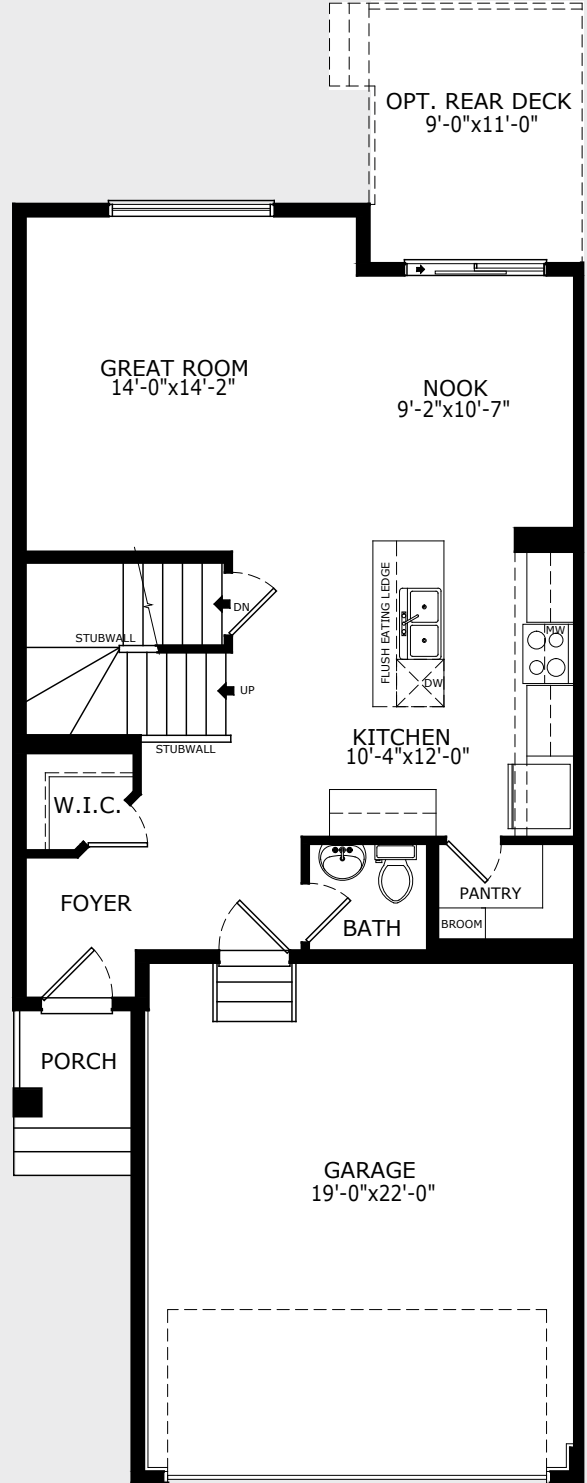
### OPTIONAL EXECUTIVE & PENINSULA KITCHEN



### OPTIONAL PENINSULA & SPICE KITCHEN



[MORE FLOORPLAN DETAILS](#)



Build Your Life

STERLINGCALGARY.COM

# Valmore 3

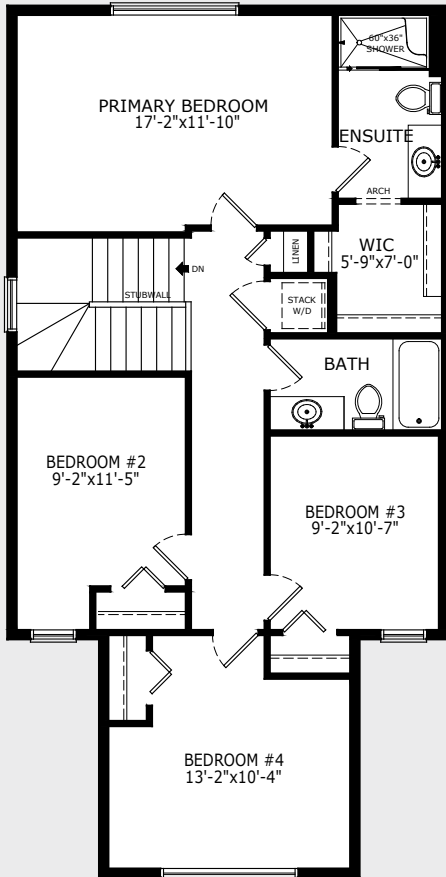
1702 SQ FT | MAIN 757 SQ FT | UPPER 945 SQ FT

**Sterling**  
HOMES  
A QUALICO Company

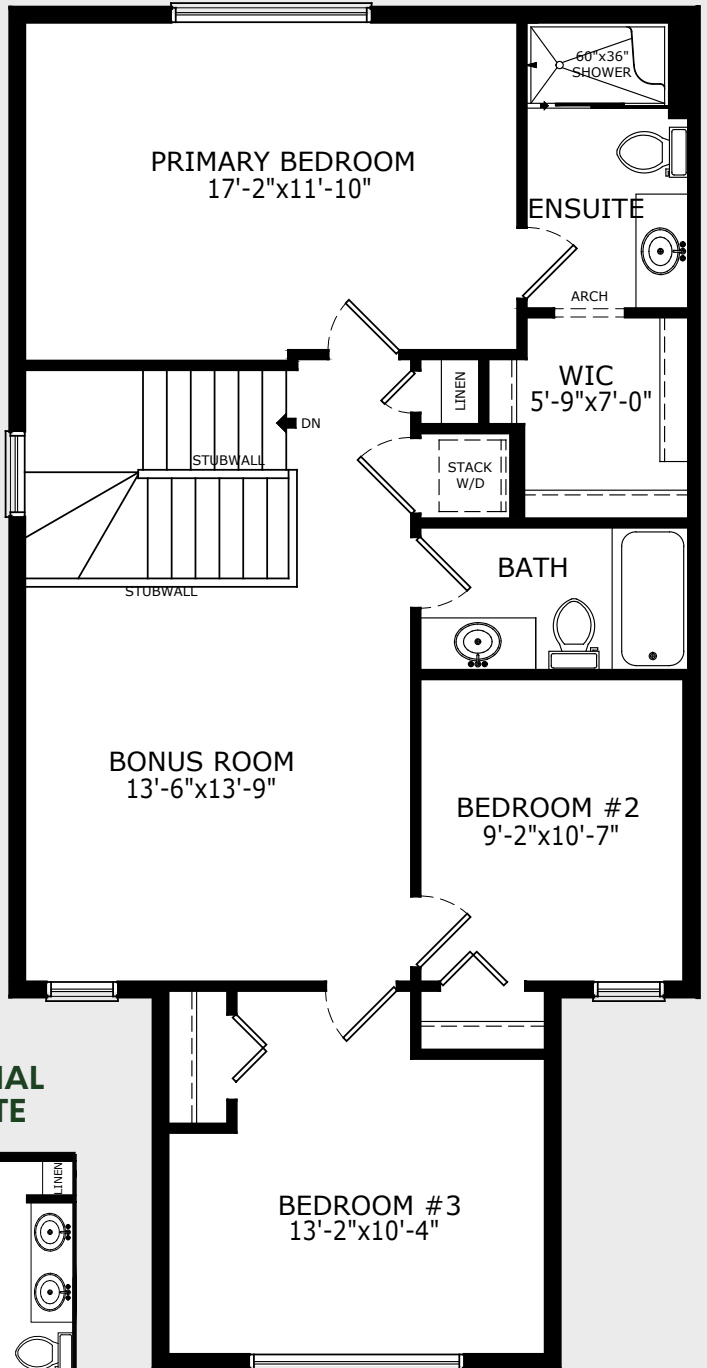
Building homes for over

-70-  
years

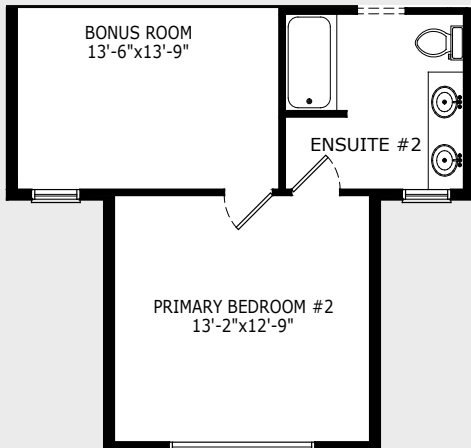
## OPTIONAL 4 BEDROOMS



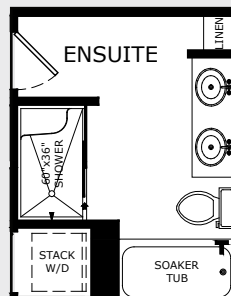
## STANDARD UPPER FLOOR



## OPTIONAL PRIMARY BEDROOM



## OPTIONAL ENSUITE



Build Your Life

STERLINGCALGARY.COM

Building homes for over

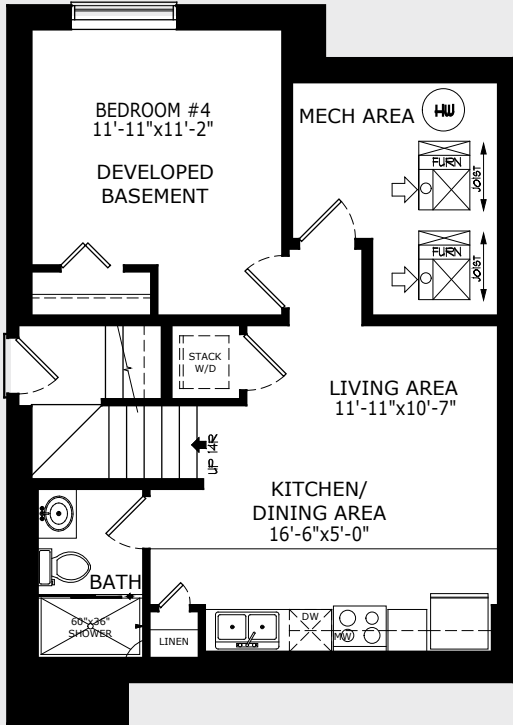
-70-  
years

**Sterling**  
HOMES  
A QUALICO Company

# Valmore 3

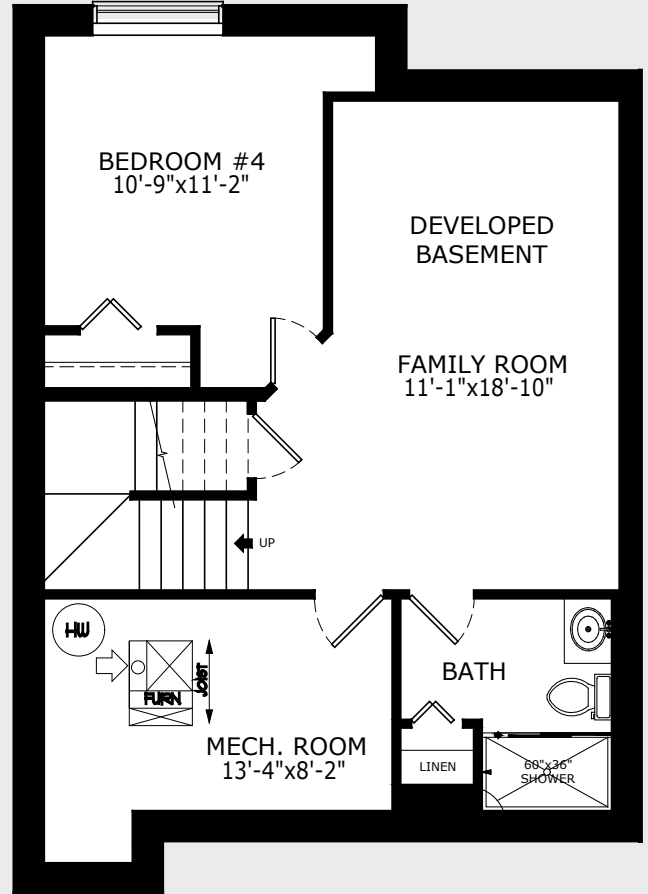
1702 SQ FT | MAIN 757 SQ FT | UPPER 945 SQ FT

## BASEMENT DEVELOPMENT OPTIONS



Legal Basement Suite - 1 Bedroom 540 Sq Ft.

**CHECK OUT SUITE BENEFITS**



Basement Development: 500 Sq Ft.

### LOOKING TO PLAN FOR THE FUTURE?

Add a basement suite rough-in to your undeveloped basement.

\*Please note some lots and communities will not allow all basement development options, please see a sales representative for further details.

### ELEVATIONS\*



CRAFTSMAN  
ELEVATION



FARMHOUSE  
ELEVATION



PRAIRIE  
ELEVATION



TUDOR  
ELEVATION

\* Elevations may differ for optional layouts

Build Your Life

STERLINGCALGARY.COM