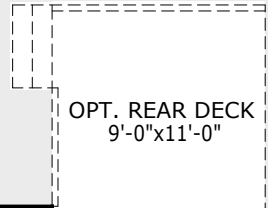




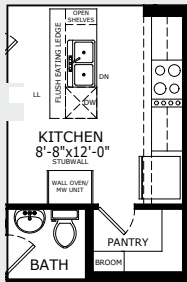
Valmore 4

1556 SQ FT | MAIN 693 SQ FT | UPPER 863 SQ FT

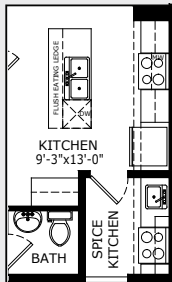
STANDARD MAIN FLOOR



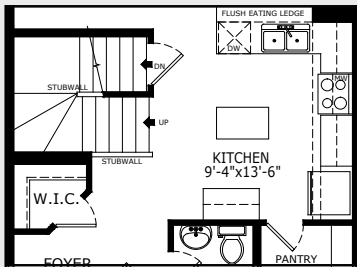
OPTIONAL EXECUTIVE KITCHEN



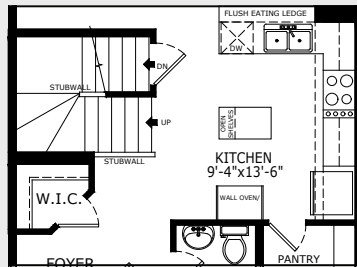
OPTIONAL SPICE KITCHEN



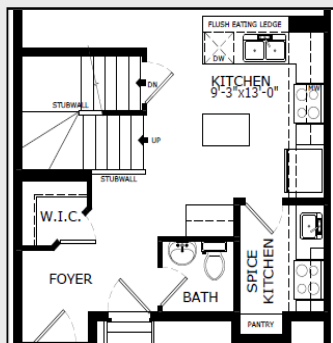
OPTIONAL PENINSULA KITCHEN



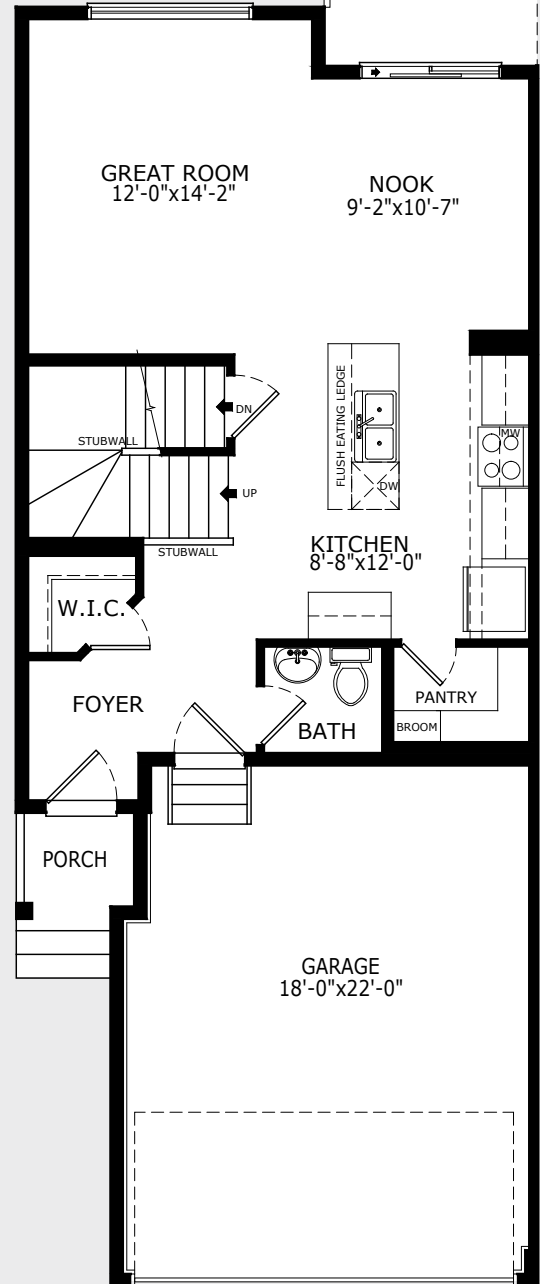
OPTIONAL EXECUTIVE & PENINSULA KITCHEN



OPTIONAL PENINSULA & SPICE KITCHEN



[MORE FLOORPLAN DETAILS](#)



Build Your Life

STERLINGCALGARY.COM

Valmore 4

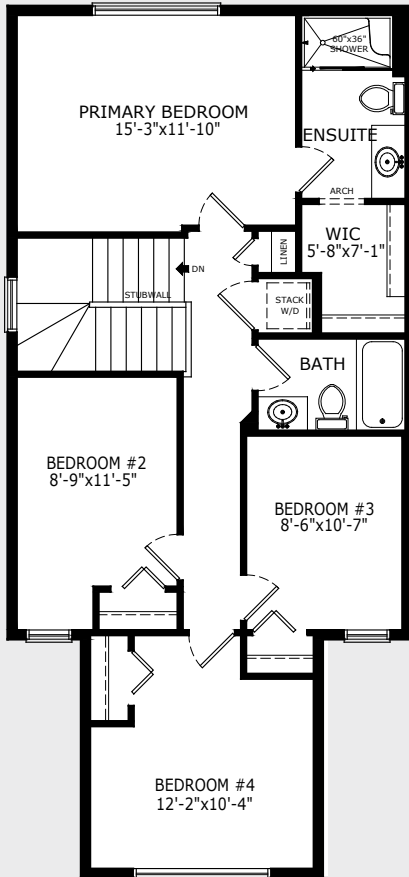
1556 SQ FT | MAIN 693 SQ FT | UPPER 863 SQ FT

Sterling
HOMES
A QUALICO Company

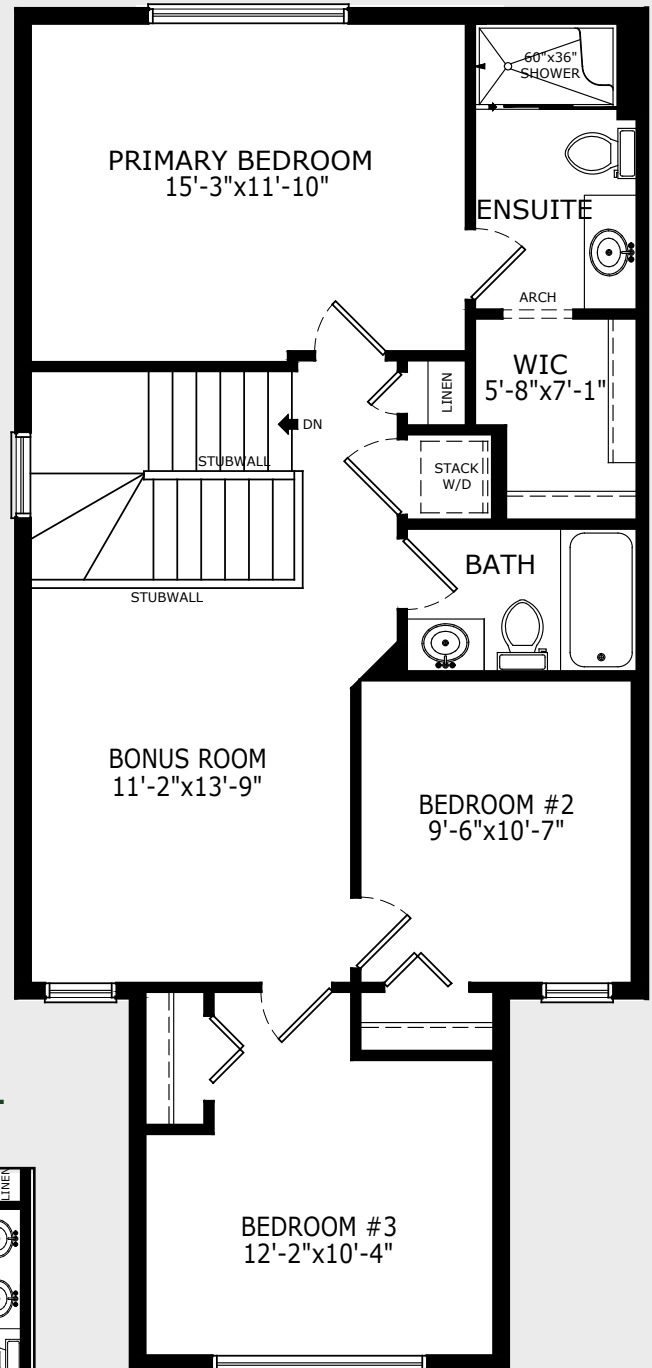
Building homes for over

-70-
years

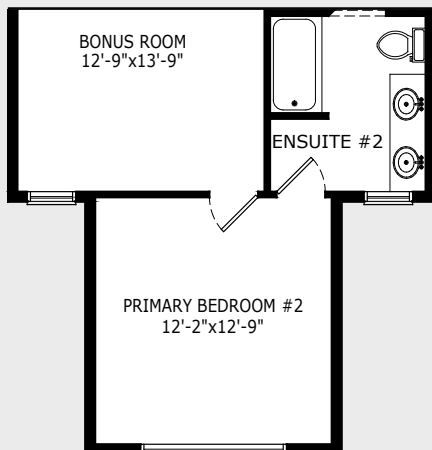
OPTIONAL 4 BEDROOMS



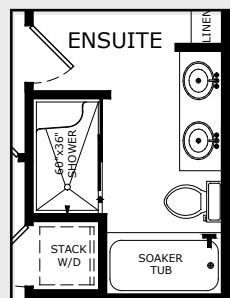
STANDARD UPPER FLOOR



OPTIONAL PRIMARY BEDROOM



OPTIONAL ENSUITE



Build Your Life

STERLINGCALGARY.COM

Building homes for over

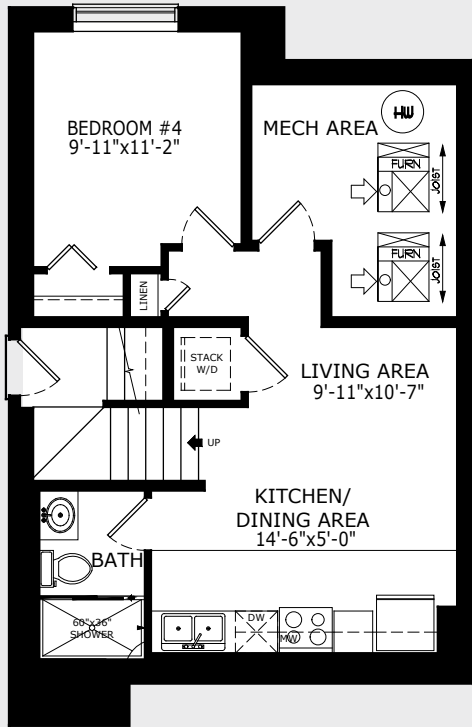
-70-
years

Sterling
HOMES
A QUALICO Company

Valmore 4

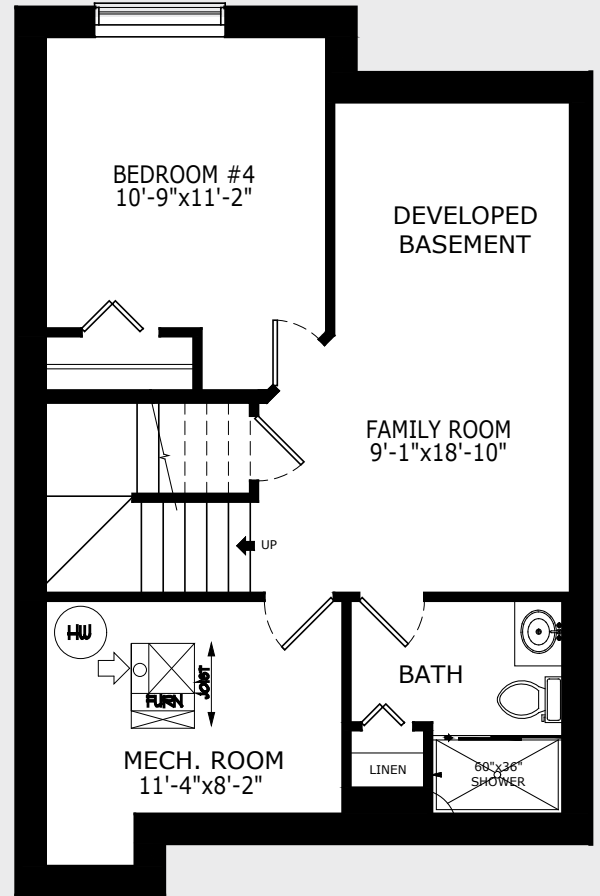
1556 SQ FT | MAIN 693 SQ FT | UPPER 863 SQ FT

BASEMENT DEVELOPMENT OPTIONS



Legal Basement Suite - 1 Bedroom 479 Sq Ft.

CHECK OUT SUITE BENEFITS



Basement Development: 456 Sq Ft.

LOOKING TO PLAN FOR THE FUTURE?

Add a basement suite rough-in to your undeveloped basement.

*Please note some lots and communities will not allow all basement development options, please see a sales representative for further details.

ELEVATIONS*



CRAFTSMAN
ELEVATION



FARMHOUSE
ELEVATION



PRAIRIE
ELEVATION



TUDOR
ELEVATION

* Elevations may differ for optional layouts

Build Your Life

STERLINGCALGARY.COM